



# Managing E-Resources in Consortium Environment

Jukka Pennanen & Leena Salminen

The National Electronic Library of Finland –  
Nelli & FinELib

# Purpose of this presentation

- To introduce an in-house system for managing e-resources in consortium environment
- To show an example of how to share information between libraries and portal maintenance/licensing
- To introduce a workflow between e-resource licensing and portal maintenance
- Get feedback of the interest of other consortia for Halti

# Agenda

- Consortium environment in FinELib
- Overview of licensing in FinELib
- Product overview – what is Halti
- Managing e-resources with Halti
- Some technical facts of Halti
- Utility for consortium libraries
- Development and the future of Halti
- Demo

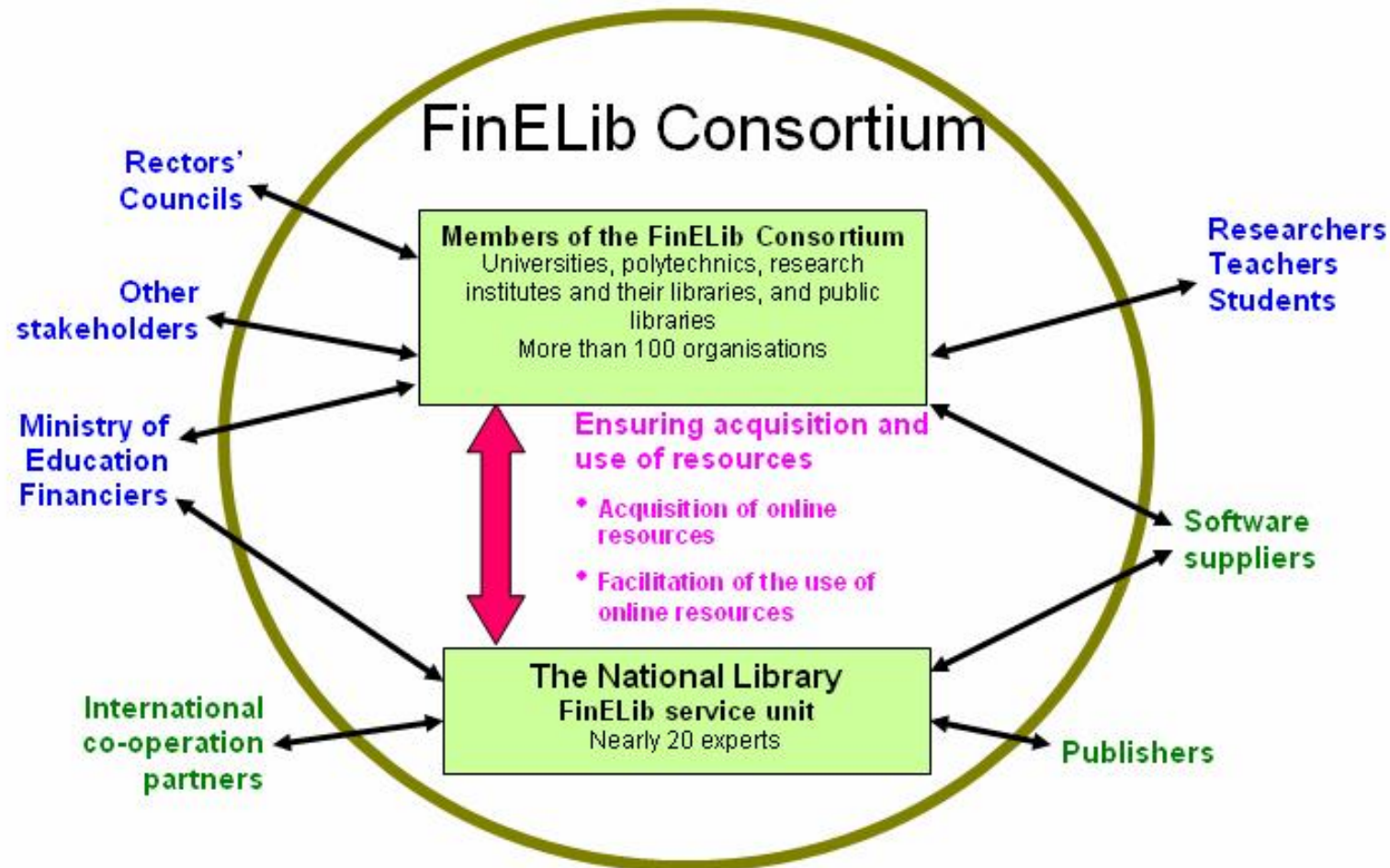
# Consortium environment in FinELib

- FinELib is a **national consortium** which supports research, teaching and studying in Finland by promoting the availability of high-quality information and its use in society.
- The members of the consortium are Finnish universities, polytechnics, public libraries and a large number of research institutes.
- The FinELib service unit **negotiates license agreements centrally** on behalf of the consortium member organizations for Finnish and foreign electronic journals, databases, e-books and other electronic resources. The member organizations select suitable e-resource packages for their own customers' needs.
- The FinELib service unit offers the electronic resources to be used via the National Information Retrieval Portal **NELLI**

# Consortium environment in FinELib

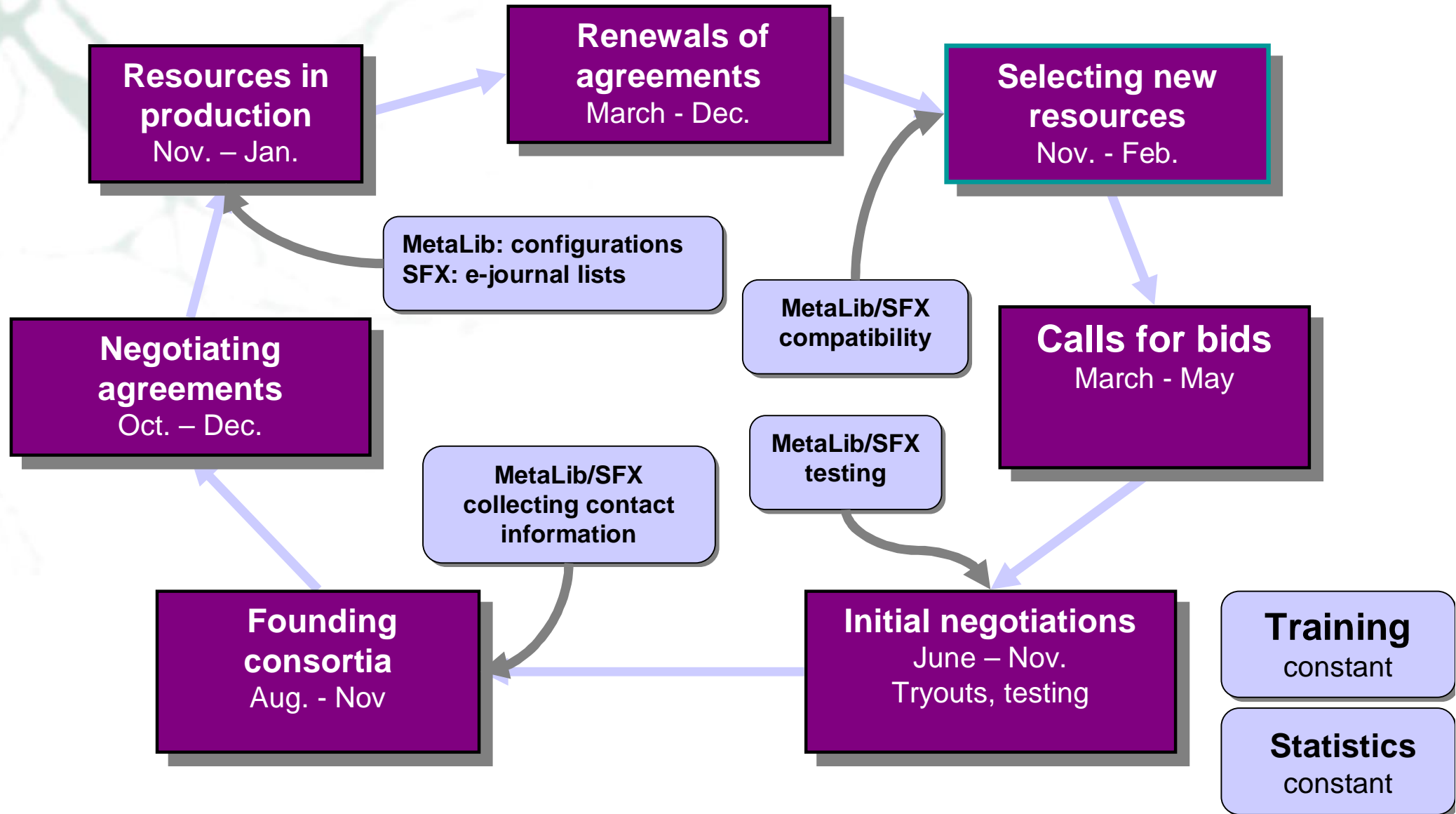
- National programme (since 1997)
- Permanent department of the National Library of Finland (2000)
- Nelli project began 2002, first library went live in 2004
- Service centre for libraries
- Aims to license high quality e-resources and develop ease of usability
- 108 members within licensing (universities, polytechnics, public libraries and research institutions)
- 67 members in Nelli consortium
- Consortium principles
- Service agreements for both licensing and Nelli
- Agreements: 60 (majority 2-3 years)
- Usage (2006)
  - 6,2M downloads
  - 42M searches

# Strategic environment of FinELib





# Overview of licensing in FinELib



# Product Overview – what is "Halti"

- Halti stands for “managing resources”
  - Administrative database for both FinELib licensing team and Nelli team
  - 1. version 2000 to “cut down the routine procedures”
  - Simple database: organizations, resources, and costs
  - 2002 requirements grew due to increase of consortia
  - Today 2. version: a tool for FinELib **and libraries**
  - User + admin levels (1 of per library)
    - Admin (1 per library) can create users and update contact information
    - Browsing can update contact information
- Maintenance and managing
  - Maintenance outsourced
  - Managing and development in FinELib and Nelli



# Utility for consortium libraries

- Some examples of the information (library specific):
  - Organizational information
  - Subscription information:
    - Cost for each subscription
    - Costs for sector specific and library specific subscriptions (reports)
    - Combined costs per year / institute / subscription (reports)
    - Costs for similar type of resources (reference/full text databases etc.) (reports)
  - Statistics (usage reports from publishers)
  - Key figures and trends of the usage of resources (reports)
  - IP reports for publishers
  - Contact and billing/invoice addresses

# Portal Management and Halti

- With Halti it is possible to
  - Share SFX/MetaLib specific information
  - Share contact information
  - Handle IP's (additions, deletions, changes, check overlapping)
  - Generate and update default\_z312 and IP filters in MetaLib
  - Use a tool for handling e-journal lists (coming)
  - Send emails to members of consortia
  - Check libraries' subscriptions (FinELib consortia)

# Recent developments

- Enrolment to resource (database) consortia (two-phase and very information intensive and interactive process)
- IP management (default\_z312, IP Filters, reports to publishers for IP authentication)
- Separate test environment created 2007
- UserID's for all public libraries (previously via regional libraries)
- Export data from Halti to the FinELib's web site
- Produce downloadable lists for SFX DataLoader automatically (from e-resources that are subscribed only partly, that is not the full package) – under construction

# Development and the future of Halti

- Technical co-operation with software company
  - enhancement requests and proposals via email and meetings
- Compare e-resources (contents) and members of consortia in consecutive years
- Improve the user interface
- Add new reports
- Add new utilities on the basis of library feedback
- Continue automating straightforward procedures
- Standards ... Counter ... Sushi?

# Some technical facts of **Halti**

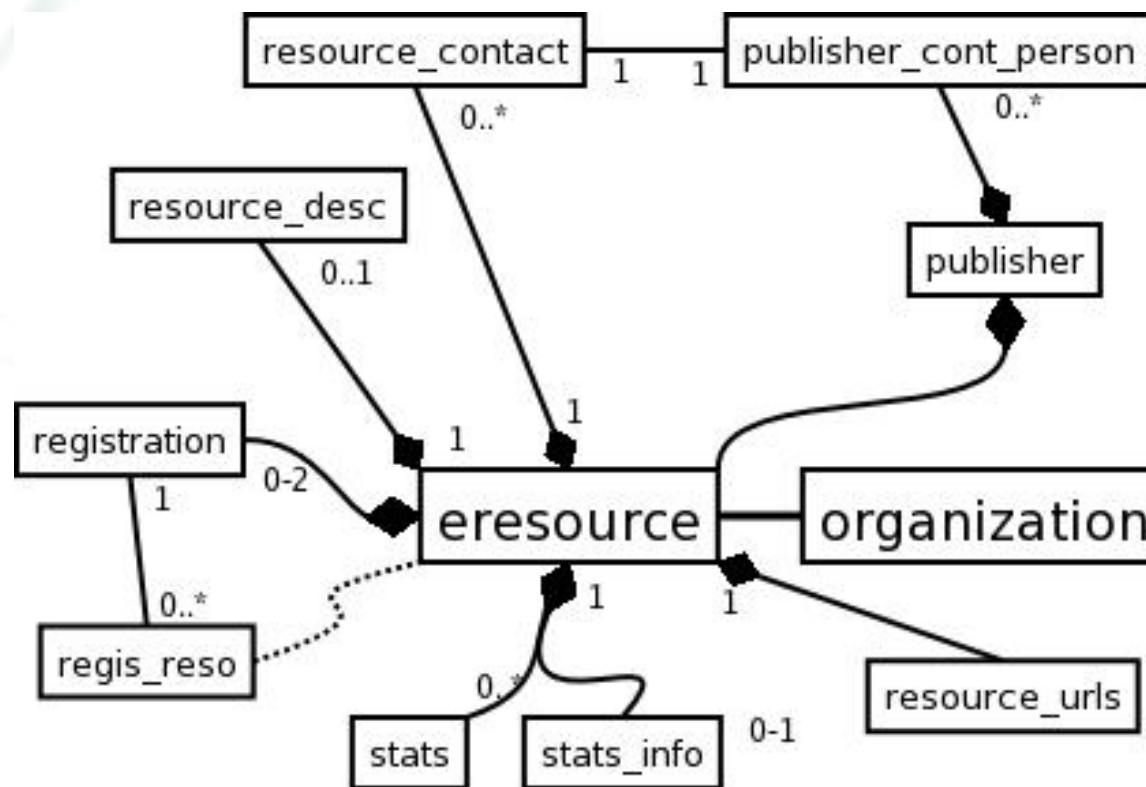
- HTTP server: Apache/2.0.46
- PHP: 5.2.2
- SSL: OpenSSL 0.9.7a Feb 19 2003 / TLSv1
- Oracle: Oracle8i Release 8.1.7.4.0 - Production
- Linux
- Authentication: Username/password (Possible also by IP)
- Maintenance and implementation of enhancements outsourced
- Interfaces: 1) Admin 2) Test 3) Library/User (all Finnish)

# Database tables

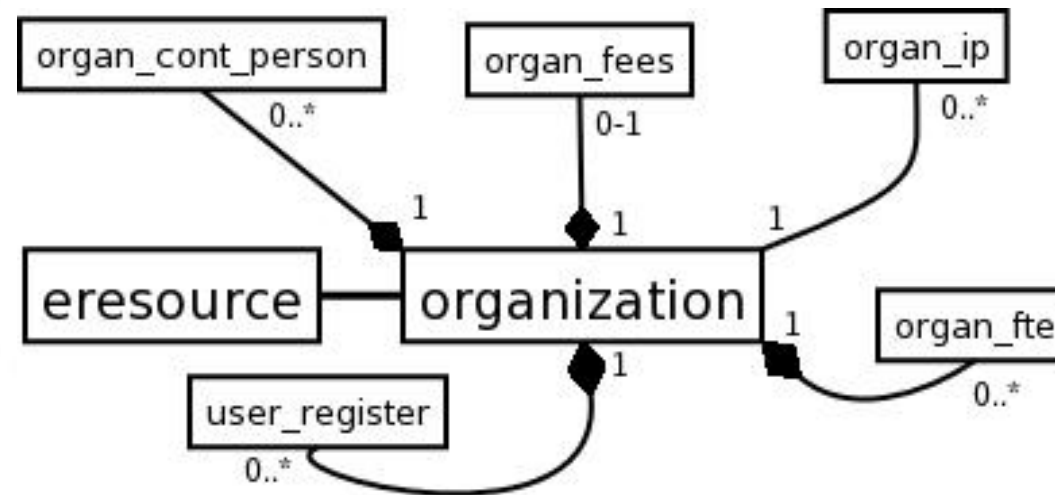
- COUNTRY
- CURRENCY
- ERESOURCE
- EXTENDED\_SUBS\_V
- LIBRARY\_SYSTEM
- METALIB\_ACCESS\_METHOD
- METALIB\_CONF
- NEWS
- ORGAN\_CONT\_PERSON
- ORGAN\_CONT\_PERSON\_IP
- ORGAN\_FEES
- ORGAN\_FTE
- ORGAN\_IP
- ORGANISATION
- PERSONNEL
- PLAN\_TABLE
- PORTFOLIO\_LIST
- PRICE\_SUBS\_DATA
- PUBLISHER
- PUBLISHER\_CONT\_PERSON
- REGIS\_RESO
- REGISTRATION
- RESOURCE\_CONTACT
- RESOURCE\_DESC
- RESOURCE\_DESC\_EN
- RESOURCE\_PORTAL\_INFORMATION
- RESOURCE\_URLS
- STATS
- STATS\_COMMENT
- STATS\_INFO
- STAT\_SUBS\_V
- TESTAUS
- TESTIT
- TIMED\_OPERATION
- USAGE\_LOG
- USER\_REGISTER



# E-resource table



# Organization table



# Demo

[Aineistot](#) | [Organisaatiot](#) | [Tilastot](#) | [Ilmoittautumiset](#) | [Henkilöstö](#) | [Raportit](#) | [Ylläpito](#)

Näytä aineisto	<h2>Aineistot</h2> <table border="1"> <tr><td>Altika</td><td>LRC</td></tr> <tr><td>Astika</td><td>NE</td></tr> <tr><td>BiogrRC</td><td>OED</td></tr> <tr><td>Clinical E</td><td>ORO</td></tr> <tr><td>ContAuth</td><td>RT</td></tr> <tr><td>Edilex</td><td>Sanastot</td></tr> <tr><td>ELL</td><td>SciRC</td></tr> <tr><td>Enc.Brit.</td><td>SEP</td></tr> <tr><td>Facta</td><td>SFS Online</td></tr> <tr><td>Grove Art</td><td>STV</td></tr> <tr><td>GroveMusic</td><td>TrueStyler</td></tr> <tr><td>IESBS</td><td>WebTranSma</td></tr> <tr><td>Juridiikka</td><td>Wilson Art</td></tr> <tr><td>KB</td><td>Yritysonli</td></tr> <tr><td>KH Net</td><td></td></tr> </table>		Altika	LRC	Astika	NE	BiogrRC	OED	Clinical E	ORO	ContAuth	RT	Edilex	Sanastot	ELL	SciRC	Enc.Brit.	SEP	Facta	SFS Online	Grove Art	STV	GroveMusic	TrueStyler	IESBS	WebTranSma	Juridiikka	Wilson Art	KB	Yritysonli	KH Net	
Altika			LRC																													
Astika			NE																													
BiogrRC			OED																													
Clinical E			ORO																													
ContAuth			RT																													
Edilex			Sanastot																													
ELL			SciRC																													
Enc.Brit.			SEP																													
Facta			SFS Online																													
Grove Art			STV																													
GroveMusic			TrueStyler																													
IESBS			WebTranSma																													
Juridiikka			Wilson Art																													
KB	Yritysonli																															
KH Net																																
E-lehdet																																
E-kirjat																																
Hakuteokset																																
Viitetietokannat																																
Viitteiden hallinta																																
Kuvatietokannat																																
Monimuotoiset ain.																																
Ylätason aineistot																																
Kaikki aineistot																																
ABC: AHL <input type="button" value="v"/>																																
<input type="button" value="OK"/>																																
Aineistohaku																																
<input type="text"/>																																
<input type="button" value="HAE"/>																																
---																																
Lisää aineisto																																
Lisää yksittäinen aineisto																																