

Welcome to Madrid 2008 and

- I-NUG Meeting 7th September 2008
- 3rd IGeLU Meeting 8th to 10th September 2008

Discovery-Systems and e-Books

In this issue:

Discovery-Systems and e-books	1
<i>Who is who, what's on, what's coming—from the Product Working Groups</i>	3
ALEPH: preparing the testing	3
MetaLib: preparing the voting	3
DigiTool: new people, new initiatives	4
SFX: a busy year ahead	5
Verde: short notices from Brno	5
Voyager: coming soon – the Voyager Product Working Group	6
Contributors to this issue	7
<i>News from the Special Interest Groups</i>	8
MetaLib/SFX Consortia: networks	8
ALEPH Consortia: a get-together	8
ARC: lively discussions of the how and who	9
Feedback report from the Steering Committee	10
IGeLU, ELUNA and Ex Libris joint initiatives	12
New people, new faces, new opportunities	13
Hola: Welcome to the 3 rd IGeLU Conference in Madrid, Spain	14
Brno short stories	15

By Gerard Bennett

There were two topical plenaries at the conference this year. The first explored 'Discovery Tools' and brought together 3 speakers, 2 of whom reported on Primo implementations (Marshall Breeding, Vanderbilt University, and Jørgen Madsen, Danish Primo Project), and the third of whom addressed a major Endeca implementation (Michele Newberry, Florida Center for Library Automation).

I have had the pleasure of hearing Marshall Breeding speak a few times at conferences and was once again impressed by his command of his subject, and his articulate, direct and engaging delivery. He gave us a very enthusiastic account of Primo and the implementation at Vanderbilt. Primo does away with the shortcomings of traditional systems that provide too many places to search, and of federated search which is too slow, complex and gives shallow results. The breadth of scope of Primo was praised – giving equal scope to print and non-print, breaking down the silos that each is usually confined to, and furthering the abolition of the divide between local and remote. Primo search was defended against the charge of dumbing-down the catalogue: a well-designed keyword search enhanced by the inclusion of words from authority headings, plus faceting and relevance ranking, more than made up for the loss of browse searching (which is not possible with this architecture). The success of Primo in being able to deal with both structured and non-structured data was shown by the content in Vanderbilt's Primo implementation: their Unicorn catalogue (Acorn) plus a database of TV news abstracts. But what about the addition of subscribed content such as the data in A&I databases? This is planned, and will be reliant on the attitude of

database vendors to the harvesting of their content. Marshall anticipated that their attitude would be positive – eventually.

Their attitude may be revealed sooner by the Danish Primo project that Jørgen Madsen presented. In some ways a more ambitious project involving a consortium of institutions led by the Royal Library, Copenhagen, it aims, among other things, to test the scalability of Primo, searching a database of 200 million records, and to integrate article searching seamlessly into Primo, including through the use of 3rd node technology. This was a new and exciting term to many of us and very simple once explained. Instead of each Primo institution harvesting databases that are also used by others, why not a central node or nodes hosted by Ex Libris where commonly used databases are harvested and made searchable by many Primo installations? The Danish project also had national ambitions to include a data bank of all licensed material for all Danish research libraries searchable by Primo. Jørgen also spoke of 'atomising' Primo where this made sense that is to present part of its functionality in varying contexts, using Primo web services. We had a glimpse of interesting possibilities here such as the ability to call up a Primo search box from a citation in, for example, a PDF document.

Michele Newberry's thoughtful account of the Endeca implementation at FCLA (Florida Center for Library Automation) threw further light on the possibilities of search technology. Their adoption of Endeca was in part motivated by exploring alternatives for upgrading 11 university library OPACs from Aleph 15 to 18, and has provided them with a union catalogue with rich functionality including guided navigation, faceted search, stemming and spell check, along

Discovery-Systems and e-Books (cont.)

with OPAC features such as display of copy availability, ability to renew and place reserves (features that the Primo user at present must drop into the OPAC to use). Michele also addressed such aspects as building the Endeca file, record de-duplication, data integrity, and a range of change management issues.

After coffee the 3 speakers joined a panel which included Dale Flecker and Oren Beit-Arie to reflect on the presentations and take questions from the audience. We learned interesting things about trends in discovery tools, for example, there is a project in the US to produce a protocol to standardise the ways in which discovery tools talk to the library system back-end such that reservations and renewals can be done through the discovery tool interface; and about different ways that Primo can handle copy availability – to deliver it on the fly, or provide it via indexing/harvesting mechanisms, the latter allowing the information to enrich the faceting thus permitting the user to view results based on availability. There were also honest evaluations of these discovery tools as they do not offer a 100% solution, and are limited by the quality of data they index. But all on the panel were very positive about their advantages and left the audience with much to ponder.

The e-books plenary on Wednesday afternoon had 2 speakers, Hazel Woodward from Cranfield University in the UK addressing the topic 'Impact of E-books on Library Services', and Dale Flecker reporting on the work of the IGeLU/ELUNA/Ex Libris E-book Focus Group.

Hazel gave us an overview of the challenges faced by librarians developing e-book collections. Her basic case was that of the prosecution: the conditions needed to develop e-book collections are not being met. Not enough core materials are being provided; too many different deals are on offer; pricing models are not flexible and not often affordable; discovery and access are hindered by the variety of sources, and interfaces and by the poor quality of metadata, hindering integration and linking; and digitization projects though welcome are burdened by

copyright restrictions. All of this leads libraries adjusting to a difficult situation rather than influencing developments. One attempt to lead developments is the JISC Observatory Project in the UK, which will spend £600,000 on core readings in 4 subject areas. The books will be available to all in UK academic institutions for 2 years, and their usage will be logged to assess impact and usage. The pricing issue was underlined when Hazel revealed that less than 100 titles were included.

Dale's report listed some initial findings of the Focus Group and it was clear that it had carried out some trenchant analysis. Few would be surprised by the finding that the complexities of e-books require separate treatment by library management systems. Among the reasons identified for this were the differences in scale. For example the quantity of e-books compared to e-journals; differences in business models; problems with identifiers in that too few e-books have DOIs, and large numbers of books being digitized were published before the era of identifiers. The incorporation of e-books in the OPAC is a major issue and there are many aspects to this including the different strands of digitization projects – full text of out-of-copyright materials, component parts for in-copyright titles – as well as the role of TOC and abstracts for catalogue enrichment. Dale then listed the tasks before of the Focus Group. Following the submission of its recommendations the Group would direct a series of implementations. This was interesting news. Dale concluded his report with a call to us for our input to the focus group. "Tell us what hurts most", was the apposite phrase I remember!



Bmo. Photo: Ragnar Helin



Panel discussion with from the left: Dale Flecker, Oren Beit-Arie, Michele Newberry, Marshall Breeding and Jørgen Madsen. Photo: Ragnar Helin

Who is who, what's on, what's coming – From the Product Working Groups

ALEPH: Preparing the Testing

By Gerard Bennett

The Aleph Product Working Group Business Meeting took place on Wednesday morning, and it was a productive one at which we appointed a new Deputy Coordinator, Mike Ryan, from CCLA (College Center for Library Automation) in Florida, USA; agreed our group guidelines; and discussed a range of topics from enhancements and enhancement processes, to version releases, to web site developments, to collaborative testing for v19. Some of these were the habitual fare of Aleph meetings, but the collaborative testing was a new and very positive development, and we were happy to announce our 2 testers who will travel to Jerusalem in late November/early December to assist in the testing v19 with Ex Libris staff. Our testers are Kingsley Boulton from York University, in England, and

Leon Krauthausen from Berlin Free University, in Germany. The discussion of versions was animated by the concern about Aleph development in the light of the planned development of the successor system to Aleph and Voyager, the URM – Universal Resource Management system. We have a schedule of releases: v19 end of 2007; v20 end of 2008, but planned with a view to interim releases, that is, an initial release of 20.1 followed by 20.2 later in the year; and then v21 early 2010. But some of our users need to know soon what happens thereafter and how users manage the transition to a successor system. Clearly something that we will all need to know before too long and that will dominate much of the communication within the Aleph Product Working Group and between it and Ex Libris over the coming years.



Upgrading infrastructure. Courtesy to Jemimus (Flickr)

MetaLib: Preparing the Voting

By Lukas Koster

At the Business meeting of the Product Working Group for SFX and MetaLib the proposal to split the Product Working Group into two separate groups was put to the vote for the second time. This year the proposal was accepted by 132 to 20 votes.

For both Product Working Groups new members for the Working Bodies were selected.

The new members of the MetaLib PWG are:

- Lukas Koster, Library of the University of Amsterdam, Coordinator
- Ari Rouvari, National Library of Finland, Communication
- Jeremy Acland, Queen Mary University of London, Enhancements

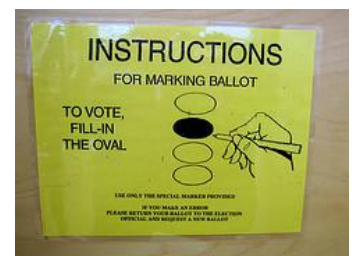
In October a new volunteer was welcomed:

- Meg Bate, AARLIN, Enhancements.

The first and most important task for the PWG will be implementing the new IGeLU/ELUNA Enhancement Request Procedure for MetaLib software, working together with the ELUNA MetaLib PWG. In order to get a number of customer enhancement requests implemented in the 4.3 minor release (June 2008), a prioritised request list has to be available by December 15, 2007.

The system selected for implementation of the Enhancement Request Procedure, Bugzilla (<http://bugzilla.org>), is still being tested and configured at the Free University Berlin, who has kindly offered to host the system. For this first round, requests will be entered into the system by the joint IGeLU/ELUNA MetaLib Enhancement Committee. Voting on the published enhancement list using the Bugzilla system will be open for IGeLU and ELUNA member institutions between December 1 and 15.

“Voting on MetaLib enhancements will be open for IGeLU and ELUNA member institutions between December 1 and 15”



Voting instructions. Courtesy to Muffet (Flickr)

Who is who, what's on, what's coming – From the Product Working Groups

DigiTool: New people, new initiatives

By Guido Goedemé

A new DigiTool Product Working Group (PWG) committee has been elected and was installed on Monday 3 September, at the Brno IGeLU meeting. The members of the group began to work as a real team at the conference. These highly motivated members are:

- Guido Goedemé (Koninklijke Bibliotheek van België, Bibliothèque royale de Belgique): DigiTool PWG Coordinator
- Luis Miguel Costa (Faculty of Engineering, University of Porto): DigiTool PWG Enhancement Coordinator
- Naomi Steinberger (The Jewish Theological Seminary): DigiTool PWG Communications Coordinator
- Matthias Gross (Bibliotheksverbund Bayern, Bayerische Staatsbibliothek)
- Yves Maurer (Bibliothèque nationale de Luxembourg)
- Niels Rozeboom (Universiteitsbibliotheek Leiden)

The DigiTool PWG will work closely with Ana Azevedo (Faculty of Engineering, University of Porto), DigiTool Liaison on the IGeLU Steering Committee, and Yaniv Levi, DigiTool Product Manager at Ex Libris.

After the installation, the new PWG held its first meeting. The first tasks of the PWG are the finalization of the enhancement list and the en-

hancement voting. The list of enhancements has now been prepared by Luis Miguel, Patricia Hults (ELUNA PWG) and Yaniv Levi, and has been posted on the DIGITOOL-L discussion list. The voting procedure was finished on 14 October 2007.

The PWG will make an attempt to establish a directory of DigiTool users. A questionnaire with a limited number of questions will be sent to IGeLU and ELUNA members to find out about other DigiTool implementations, to give an overview of the existing repositories, and to provide information about projects that are being undertaken or have been completed. The directory will be a tool for knowledge sharing and for learning about new initiatives, as well as a source of inspiration for new developments. Every month, an institute will be invited to publish an article on the IGeLU website, presenting its realization, or a part of it: results, workflow, method, difficulties, successes, user feedback, etc.

Contact with DigiTool users is very important for the PWG. We will try to keep all users informed, and the publication of the DigiTool presentations at the Brno conference is a first approach in this direction. The use of the discussion list is encouraged, and other communication methods will be explored. The reports of the monthly telephone sessions will be circulated via the discussion list and published in the members section of the IGeLU website.



From DigiTool to Aleph and back again. Courtesy to Pascal Calarco



Entertainment at the social event on Monday evening. Photo: Ragnar Helin



Togetherness in the rain on Monday evening. Photo: Ragnar Helin

Who is who, what's on, what's coming – From the Product Working Groups

SFX: A busy year ahead

By Mark Dehmlow

As many already know, the IGeLU SFX/MetaLib Product Working Group split at IGeLU meeting in Brno into separate product working groups for SFX and MetaLib. We are all very excited about this change as it will facilitate giving SFX its necessary focus as a product. Being a relatively new group, the first order of business for the SFX Product Working Group is to get ourselves organized which is in process at this moment. We are very fortunate to have five team members:

- Mark Dehmlow from the University of Notre Dame in the U.S. as the coordinator,
- Nikki Crowster from the CALICO consortium in South Africa in the communications role,
- Inga Overkamp from the Heinz Nixdorf Center for Information Management in the Max Planck Society in Germany,
- Carol Fuchs and Luba Gornstein from the Hebrew University of Jerusalem on the enhancements team.

We have two main tasks on the immediate horizon, with others to follow.

The first is to organize participation in a collaborative focus group between IGeLU and ELUNA that will work closely with Ex Libris on issues related to the SFX Knowledgebase. Andreas Sabisch from the Free University of Berlin outlined many of these issues in a document that he presented to the SFX National User Groups (S-NUG) at the IGeLU meeting

(http://www.igelu.org/conferences/conference2007/2007_material/sessions/snug2007/snug_sabisch.pdf).

The second initiative we will be focusing on is to develop a collaborative enhancements process with ELUNA and Ex Libris, using the substantial work that the prior IGeLU and ELUNA SFX/MetaLib Product

Working Groups developed as a framework and starting point.

Undoubtedly, we have a busy year ahead of us and one in which we hope to accomplish much.



SFX MAN. Courtesy to Turbulentflow (Flickr)

Verde: Short notices from Brno

By Andreas Sabisch

At Brno we had two VERDE meetings.

In the business meeting of the Product Working Group we had three informative talks about experiences with Verde implementation. You can find the slides on the IGeLU websites, please contact the authors for further questions. At the end of the business meeting we looked for new volunteers for the PWG. Andreas Sabisch is the Chair of the group and Richard Cross is the new Deputy Chair.

The second meeting consisted of a presentation from Ex Libris and an interesting Q&A session with Ted Koppel and Netti Lagace. You can find the slides on the DocPortal of Ex Libris. The Q+A is available in the password protected area of the IGeLU websites as well.



Session in Brno. Photo: Ragnar Helin

Who is who, what's on, what's coming – From the Product Working Groups

Voyager: Coming soon—the Voyager Product Working Group

By Lesley Gray and Simon Huggard

At the IGeLU conference in Brno, the first-ever Voyager Business Meeting was held. There were 15 members from 7 different countries who attended the meeting.

At the Voyager Business Meeting the structure of the Voyager Product Working Group (VPWG) was approved. A draft set of bylaws was discussed and it was agreed that these be re-phrased as guidelines, to more easily allow for flexibility and changes in the future. Issues relating to the conference, voting, enhancements, national user groups and membership issues were discussed at the meeting. The minutes of this meeting have been sent to the Voyager-L and are available on the IGeLU website.

Issues relating to the Voyager sessions at the IGeLU conference were discussed and both Clare Whittaker and Annu Jauhiainen were thanked for their enormous contribution in getting the Voyager track up and running for the conference. The Voyager track included presentations on a wide variety of technical as well as theoretical issues, with the combined Voyager/Aleph sessions being the best attended sessions.

Formation of the Voyager Product Working Group

The new Voyager Product Working Group (VPWG) is still in the process of being formed. As of 1 October we had 4 volunteers for the VPWG who will initially form the core of the executive members of the group. The members of the executive will also call on volunteers to work with them on the modules and add-on products for Voyager.

The initial call for VPWG volunteers was been extended to allow further nominations, and the nominating committee of Angus Shaw, Helen Brownlie and Laurie Duquette have done a great job working on recruiting as many people as possible to fill the vacancies in this group.

Collaborative Testing

In line with previous collaborative testing of MetaLib, planning is underway for collaborative testing of the Voyager 7 release at the Ex Libris offices in Chicago in February 2007. The first phase of the collaborative testing will cover the



functional aspects of the Voyager staff client software (primarily acquisitions and circulation), and the second phase, the customisation and setup of WebVoyagé. ELUNA and IGeLU will nominate four customers to participate in the testing.

Enhancements

The VPWG has been holding monthly conference calls with the Ex Libris Product Managers (Kathryn Harnish and Mike Dicus) and the ELUNA VPWG to discuss the new enhancement process for Voyager. This process, which we have been working on for a number of years, and which was discussed at EndUser in Chicago in April, was in the process of being finalised with the IGeLU and ELUNA Steering Committees in October/November. In summary, the process will involve the following:

- All enhancement requests submitted via SupportWeb will be given a status of Accepted, Rejected or Under Consideration on a monthly basis by the Voyager Product Manager.
- A monthly summary of new requests will be provided to the VPWG by Ex Libris to keep the Enhancement Co-ordinators informed about requests and decisions being made
- Ex Libris will release a statement of major functional areas they propose to work on for

Attendees at the first ever IGeLU Voyager Business Meeting in Brno.

Clockwise from the right foreground are: Annette Johannsson, Ed Corrado, Simon Huggard, Lesley Gray, Gill Hamilton, Azungwe Kwembe, Sharon Hu, Kristiina Hormia, Peter Price, Maria-Jose LLoret, Clare Whittaker, Janet Lute, Annu Jauhiainen (missing from the photo are Bob Trotter and Ulla Huurinainen).

Who is who, what's on, what's coming – From the Product Working Groups

Voyager: Coming soon—the Voyager Product Working Group (cont.)

- the next major release for comment by customers
- 4-6 months before development activity begins for that next major release, discussion and comment will be invited from customers (via a wiki or other environment on the Ex Libris site) and will be moderated by IGeLU and ELUNA regarding suitability of these major functionality areas
- Ex Libris will then finalise what areas they

will work on in the next release

- The user group will be given a further opportunity to review these areas (including all outstanding enhancement requests) and provide feedback

It is anticipated that the current process of reviewing enhancements for Voyager 8 will have already been announced and started off in October/November so that development on Voyager 8 can begin in early 2008.

Contributors to this issue of IGeLU Newsletter in alphabetical order

Gerard Bennett, G.J.Bennett@westminster.ac.uk, from Westminster University is Coordinator of the ALEPH Product Working Group

Peter Klien, peter.klien@bibvb.ac.at, from the Austrian Library Network and Service Ltd Austria is Coordinator of the ALEPH Consortia Special Interest Working Group

Mark Dehmlow, mdehmlow@nd.edu, from the University of Notre Dame is Coordinator of the SFX Product Working Group

Lukas Koster, L.Koster@uva.nl, from University of Amsterdam is Coordinator of the MetaLib Product Working Group

Dale Flecker, dale_flecker@harvard.edu, from Harvard University is member of the IGeLU Steering Committee

Ari Rouvari, ari.rouvari@helsinki.fi, from the National Library of Finland, is Coordinator of the MetaLib/SFX Consortia Special Interest Working Group and member of the MetaLib Product Working Group

Laura Gilinski, laura.gilinski@exlibris.co.il, Ex Libris

Guido Goedemé, guido.goedeme@kbr.be, from the Royal Library of Belgium is Coordinator of the DigiTool Product Working Group

Cristina Ruiz, cristina@bib.csic.es, from the Spanish Council for Scientific Research is member of the local planning committee for the IGeLU 2008 conference in Madrid

Lesley Gray, lm10013@cam.ac.uk, from Cambridge University is an interim member of the IGeLU Steering Committee and interim Coordinator of the Voyager Product Working Group

Beate Rusch, rusch@zib.de, from the Library Network Berlin-Brandenburg (KOBV) is member of the IGeLU Steering Committee

Simon Huggard, Simon.Huggard@lib.monash.edu.au, from Monash University is an interim member of the IGeLU Steering Committee and interim Coordinator of the Voyager Product Working Group

Andreas Sabisch, sabisch@ub.fu-berlin.de, from Free University of Berlin is Coordinator of the Verde Product Working Group

Jirka Kende, kende@ub.fu-berlin.de, from Free University of Berlin is Chair of IGeLU

Marcus Zerbst, marcus.zerbst@zb.unizh.ch, from Zentralbibliothek in Zürich, is Coordinator of the ARC Special Interest Working Group and deputy Coordinator of the ALEPH Product Working Group

News from the Special Interest Groups

MetaLib/SFX Consortia: Networks for people and systems

By Ari Rouvari

We divided the MetaLib/SFX Consortia Special Interest Working Group session in Brno into two parts: presentations and a workshop.

Presentations and discussion topics

Ere Maijala from Finland talked about automatic MetaLib statistics in a consortial environment. Then Jukka Pennanen from Finland presented the Finnish Halti system to us. Halti is a Consortia Working Tool for MetaLib and SFX Management. We also discussed opportunities to develop Halti system together with other European Library Consortia.

A single consortial SIWG? The possibilities of merging all IGeLU consortia SIWGs together were discussed and we will continue the discussion at the next IGeLU meeting in Madrid.

Workshop

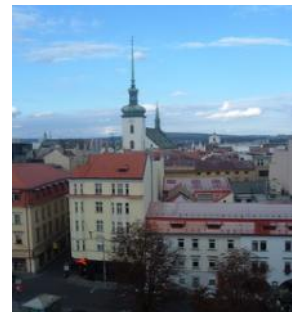
The focus of the workshop was to make a list of enhancement issues for consortial environments and to talk about ideas to improve ML/SFX consortia features. Actually, we started to make this enhancement list in London at SMUG2005.

The New Enhancement List (IGeLU 2007) :

- 1 Improved documentation for consortia (ML/SFX). A list of consortia specific stuff

- 2 Security between different ML institutions
Document possible and accepted solutions
- 3 SFX Directory permissions (shared server)
(No documentation)
- 4 SFX parsers / data exchange
Mechanism for copying everything related to a target or service between instances
- 5 Selective automatic IRD update
- 6 Selective copying of presentation data between IRDs
- 7 Institution and portal specific settings instead of global, system wide settings (ML)
- 8 Statistics (also consortial stats from SFX)
- 9 MetaLib user management
- 10 MetaLib admin rights granularity
- 11 SFX: more flexibility in handling portfolios of sub targets, for example activating all portfolios of Highwire Press
- 12 Change logs for SFX Admin Center
- 13 Export feature in SFX getting the holdings of the participating institutes/groups sharing an instance

MetaLib/SFX Consortia SIWG information can shortly be found on the new IGeLU Website. Contact person: Ari Rouvari, The National Library of Finland (email: ari.rouvari@helsinki.fi)



Jakubská church, Brno. Photo: Lukas Koster

ALEPH Consortia: A get-together of the get-together specialists

By: Peter Klien

The Special Interest Working Group on ALEPH Consortia and Shared System were invited to its fourth meeting at which 21 participants from a lot of different consortial institutions came together to exchange knowledge and experiences. After a short report of last year's activities (which mainly consisted of collecting information on the IGeLU homepage), we had a look at a graphical overview of all existing ALEPH consortia models. Using this overview together with a newly made questionnaire for acquiring consortial core data, each participant was able to present a significant introduction to their institution. Finally, we agreed on the group's aims

for the years ahead: in the short term, we are going ahead with gathering as much information as possible of all existing models and installations and presenting this information on the IGeLU website; in the longer term, we are working together with Ex Libris on developing the new URM from the consortia point of view. So we will not be bored...

If you are interested in our conference materials, please find all of them at:

http://www.igelu.org/conferences/conference2007/2007_material/sessions/session-18d-aleph-consortia-siwg-meeting/



Peter Klien.
Photo: Ragnar Helin

News from the Special Interest Groups

ARC: Lively discussions of the How and Who

By Marcus Zerbst

Various activities around ARC lead to the formation of an ARC SIWG at the end of 2006 which was assigned to the Aleph PWG. Later a joint mailing list with ELUNA was set up.

The ARC session at the 2nd IGeLU conference in Brno was an informative and productive event. We were happy to have Dalia Mendelsson (Aleph product manager) and Noam Kaminer (customer service manager) attending. Dalia gave a racy product update on ARC 2.0 and showed some exemplifying reports and functions (see her presentation on the Ex Libris Documentation Center). She and Noam constructively answered the questions gathered in advance.

Administration

Marcus Zerbst from Zentralbibliothek Zürich will continue as the group's coordinator administering the running of the group. Theo Engelman from Utrecht University Library will serve as the deputy coordinator, mainly in charge of server issues such as installation, ETL and the like.

Canned reports

A quick survey via the mailing list before the meeting and a related discussion at the meeting showed a consistent opinion on the canned reports: While we appreciate the effort Ex Libris puts in to creating such ready-to-go models, we don't sufficiently benefit from it. Why not? In most cases different fields or filters are needed by users. The report then needs to be modified, but it is more troublesome to figure out how the canned report has been written than to start from scratch. - Our suggestion to Ex Libris is

instead to prepare more granular information on report generation such as creating or changing prompts, adding useful filters or on page design.

Data availability

The Ex Libris concept that ARC is being used by the requesters or users of management information is not consistent with every day use of ARC. All attendees at the meeting confirmed that only system librarians work with ARC. And the reasons for that are logical: to work with the ARC interface, one doesn't have to be a skilled ICT-person, but to design or adapt reports to contain correct and useful data from which management can draw sensible conclusions, one has to be a system librarian with a thorough knowledge of the data model and the data that's in it. That's why at the meeting Ex Libris was requested to add an 'expert' package to ARC, having the complete data not scattered into packages. This 'expert' unit could improve the usability of ARC, for there is a lot of data available in ARC that currently can't be combined. Still, certain information is not available. Be it an entire table or a single field. While the respective relevance varies, there are intersections and common goals! We need to identify these items and request the development from Ex Libris. Now, after some discussion of the 'How' and 'Who', we are looking forward to a more focused way of bringing enhancements to the product: Ex Libris has encouraged us to set up a focus group to do this. Let's work together to make such dedicated group alive!

Please see IGeLU website at <http://www.igelu.org/specialwg/arc/> for more details about the ARC SIWG and its activities.



Moravian Children's Dance Troupe, Brno Folk Festival. Photo: Pascal Calarco



View of central square, Brno. Photo: Pascal Calarco



Hotel Slavia where many of us stayed. Photo: Pascal Calarco

Feedback Report from Steering Committee: Working behind the scenes and in front

By Jirka Kende

I guess I speak for all attendees of the 2nd IGeLU Annual meeting in Brno when I say that the conference was a great success – a broad variety of topics presented by users and Ex Libris, interesting keynote sessions and a good opportunity for information exchange in a warm and friendly atmosphere. I would like to thank again all who contributed to the success of the conference, especially the Moravian State Library and our Czech colleagues, the IGeLU officers and volunteers and last but not least Ex Libris.

Though there has been very positive feedback from the user community about the conference, we will, before we draw conclusions for the next meeting in Madrid, together with our Czech colleagues, thoroughly evaluate your comments in the questionnaire. We will certainly keep the concept of plenary and breakout sessions for the individual products, but will nevertheless explore the possibility of further improvements of the structure and organisation of future meetings.

Steering Committee Members, Responsibilities

At the Assembly of Members in Brno members voted to re-elect Ana Azevedo and Beate Rusch for a second term and voted Clare Whittaker as a new member of the Steering Committee. As Chair I am very pleased that Ana and Beate will be able to continue the successful work that they started during their first term, and I would like to warmly welcome Clare, a member of the former EndUser community.

Although the Steering Committee works as a team, individual members do have certain basic areas of responsibility that you might be interested to know about:

- Ana Azevedo: Liaison Product Working Group DigiTool, National User Groups, I-NUG meeting;
- Beate Rusch: Liaison Product Working Group MetaLib and Product Working Group SFX (together with Simon Huggard), Communication, newsletter, IT infrastructure;
- Clare Whittaker: Liaison Special Interest Working Groups, Conference planning (liaison for local organization committee), documentation;
- Dale Flecker: Liaison Uniform Resource

Management System, Conference planning (keynote sessions 2008), strategic issues;

- Jirka Kende: Liaison Product Working Group Verde, Chair;
- Michele Newberry: Liaison Product Working Group ALEPH, Conference planning (structure, program breakout sessions).

The interim members of the Steering Committee took over the following responsibilities:

- Lesley Gray: Liaison Product Working Group Voyager, Communication, newsletter;
- Simon Huggard: Liaison Product Working Group SFX (with Beate), Support, Pivotal.
- Guido Badalamenti, who is no longer member of the Steering Committee, was appointed as IGeLU Treasurer and takes care of the administration.

Amendments to the Statute

An important topic at the Assembly of Members in Brno was voting on the Amendments to the IGeLU Statute. Thanks to the proxy votes the required quorum was achieved, with 171 member institutions taking part in the voting. The Amendments were approved by the majority of the 166 members. These changes will significantly ease the administration of our Association. The new Articles VII and X have now the following wording:

Art. VIII. Chair 1.: The Chair shall function as an administrator, who shall have all ordinary and extraordinary administrative powers and the power to delegate them.

Art. X. Seat: The seat of IGeLU is in Siena (Italy), at the University of Siena, Banchi di Sotto, 55.

National User Groups

During the joint meeting of A-NUG, S-NUG and V-NUG prior to the separate meetings of the individual groups on the Sunday before the conference in Brno, the representatives of the national user groups decided that, next year in Madrid, there will only be a joint meeting of the representatives of all national user groups (I-NUG). The reason for this decision is partly because the issues discussed at the meeting relate to all products, and partly because many institutions use multiple products and quite a few national user groups for different products have already formed single national user groups for all products.



The organizing committee of the conference in Brno. Photo: Ragnar Helin



Voting. Photo: Lukas Koster



Joint A-NUG, S-NUG and V-NUG meeting on Sunday. Photo: Ragnar Helin

Feedback Report from Steering Committee (cont.)

Steering Committee Negotiations with Ex Libris

During the conference in Brno the Steering Committee discussed several topics with Ex Libris, some of which had been raised during the A-NUG and S-NUG meetings prior the conference. The main topics were Pivotal (moving Voyager users from Customer First, testing of new features by new and old customers), regional competence centres for new products (concentration of the first line support), plans for Ex Libris Wikis (IGeLU will set up a working group to evaluate the communication infrastructure), accessibility of products (new Ex Libris product manager working specifically on cross-platform, browser and accessibility issues), SFX CKB (Ex Libris will set up a working group with IGeLU to explore improvements), future version policy for ALEPH (will be clarified by Ex Libris), course reserves (Ex Libris will inform about future plans), cost effective ALEPH-add-ons (clarification was sent to A-NUG after the meeting), security issues, Oracle memorandum (Ex Libris will continue to work on these issues with the user community). And, of course, the strategy and plans of Ex Libris for the new URM were discussed extensively as well as the involve-

ment of the user community in this process.

During the conference the IGeLU Steering Committee also discussed important topics of cooperation with the Steering Committee of ELUNA. During the discussions the agreement on the joint enhancement procedures for all non-Aleph products was confirmed. Further topics were the nominations for the collaborative testing of ALEPH version 19 as well as the EndUser merger and organisational issues.

Communication

Although we took quite a step forward last year by installing regular communication channels between the PWGs and Ex Libris product managers, between the PWGs of IGeLU and ELUNA etc., the improvement of communication within the association, with Ex Libris, with the national user groups, and with the user community remains a big challenge for the coming year. An important part of these efforts is the new IGeLU website, which we hope to release on January 1st, 2008, latest.



Jiri Kende and Beate Rusch, SC.
Photo: Ragnar Helin



IGeLU activists. From the left: Gerard Bennett, Beate Rusch, Ari Rouvari, Jirka Kende, Ana Azevedo, Simon Huggard, Pascal Calarco, Lesley Gray, Andreas Sabisch.
Courtesy to Lukas Koster



Time out. Photo: André Keyzer

IGeLU, ELUNA and Ex Libris joint initiatives

By Dale Flecker

One of the most important functions of IGeLU is to serve as a locus for users and Ex Libris to work together in areas of mutual interest. IGeLU is now engaged in three important joint initiatives with Ex Libris and ELUNA:

- **E-Books.** An ad hoc E-book Focus Group formed by IGeLU, ELUNA, and Ex Libris has been meeting for several months to discuss the key functional requirements raised by the rapidly increasing number of e-books that libraries support. A report of the progress of the Focus Group was given at the September IGeLU membership meeting in Brno. A key question for the group is what are the key short-term priorities for libraries. As background for these discussions, the Focus Group is soliciting input from across the Ex Libris customer community about what are the most pressing problems encountered today in trying to support e-books. It is interested in needs across all Ex Libris products, and is focused on not just commercial e-book products but all forms of e-books, including free e-books on the Internet such as those offered by Google, the Open Content Alliance, and by individual libraries. The Focus Group welcomes comments from any customer or group of customers. Comments should be addressed to Ted Koppel at: Ted.Koppel@exlibrisgroup.com. The deadline for submitting comments is November 8, 2007.
- **Collaborative Testing.** Last winter ELUNA and IGeLU sent representatives to Jerusalem to help test the soon-to-be-released

MetaLib 4.0. There was very strong consensus afterwards that this joint testing was quite useful, and both users groups have agreed with Ex Libris to continue the practice. The next collaborative testing will be for Aleph version 19. User representatives who have agreed to participate in the testing are:

- * Kingsley Boulton, York University (IGeLU)
 - * Leon Krauthausen, Freie Universität Berlin (IGeLU)
 - * Daniel Cromwell, Florida Center for Library Automation (ELUNA)
 - * Christopher Rose, University of Minnesota Libraries (ELUNA).
- **New generation ILS.** Ex Libris is in the very early stages of planning for a new generation of processing system called the "Unified Resource Management" (URM) system. The Steering Committees for IGeLU and ELUNA have begun very open and useful discussions with Ex Libris management about user concerns about and involvement in this planning. Topics under discussion include
 - * the need for frequent communication with users as plans develop
 - * how users can have systematic input concerning functional needs for a new system
 - * business aspects of the transition from current generation systems (Voyager, Aleph) to the URM.

IGeLU members can expect to hear a *great deal* more about these and related topics over the next several years as Ex Libris' plans progress!



Dale Flecker

"Your comment is needed by November 8!"



Brno. Photo: Ragnar Helin



Wall in the conference hotel. Photo: Ragnar Helin

New people, new faces, new opportunities - The 2nd Annual IGeLU Meeting in Brno

By Laura Gilinski, Ex Libris

This follow-up issue of the IGeLU newsletter is a wonderful opportunity for Ex Libris to once again extend its thanks to the IGeLU planning committee, the Moravian State Library staff, and the IGeLU steering committee, headed by Jiri Kende, for the outstanding organization and execution of the enormously successful IGeLU meeting held in Brno, Czech Republic. As always, this meeting provided a perfect setting for participants to meet each other in person, share information, and come away with concrete action items for the year to come.

Many of you had the chance to meet or hear about some of the newest additions to the Ex Libris team. For those of you who did not have this opportunity, we would like to introduce a few of the faces whom we hope you will become familiar with in the upcoming months. Most of these new team members work out of the Ex Libris headquarters.

Anat Kuper, director of global customer support, is responsible for providing global customers with second-line application and technical support and product release services. In addition to collecting, compiling, analyzing, and reporting support-incident data, Anat works on the preparation, testing, and releasing of products and service packs.

Einat Zviran, VP development, brings over 20 years of experience in the field of software research and development to her role of overseeing the development of all Ex Libris products.

Eyal Zohar, director of product marketing, is responsible for all go-to-market activities for the entire Ex Libris product suite.

Gilad Gal, Primo product manager, In charge of all aspects of Primo product management, Gilad brings with him hands-on experience in large-enterprise customer implementations as well as an extensive understanding of Java 2 Platform, Enterprise Edition (J2EE) and service-oriented architecture (SOA).

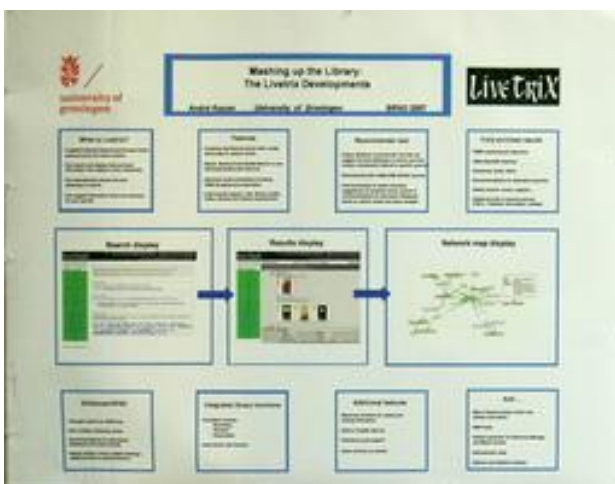
Hillel Ben David, cross-product manager, handles Ex Libris product-interoperability issues from the product management perspective.

Verena Friesl-Vollmann, channel manager Europe, works out of Ex Libris Germany. Verena's key responsibility is to support the European customer base by liaising with European Ex Libris distributors and their customers on issues such as marketing and sales activities, distributor performance and certification, and the timely resolution of support incidents.

As mentioned at the IGeLU meeting, we are currently making plans for celebrating the 1500th SFX[®] customer. We will report back on these activities as they are solidified.



Ex Libris communicating.
Photo: Ragnar Helin



LiveTriX Poster. Photo: André Keyzer



Peter Klien moderating the general question & answer session. Sitting from left: Einat Zviran, Oren Beit-Ari, Nancy Dushkin, Matti Shem-Tov, Marc Daubach, Don Muccino. Photo: Lukas Koster

Hola: Welcome to the 3rd IGeLU Conference in Madrid, Spain - 8-10 September 2008

By Cristina Ruiz

Widely known as the land of Don Quixote, Dalí, García Lorca, Picasso, Almodóvar and Javier Bardém, Spain is appreciated all over the world for its art, literature, musical culture, landscapes, good weather and gastronomy.

The city of Madrid is the administrative and financial capital of Spain, but is also well-known for its cultural life and its three most important museums: The Prado Museum, the Thyssen-Bornemisza Museum, and the Reina Sofía Museum and Art Centre; these three museums are located in the city center, forming what is known as the "Golden Triangle", and are an obligatory visit for art lovers.

Madrid is to be the host city for the next IGeLU Conference, which will be organised by the Spanish Council for Scientific Research (CSIC).

The CSIC was founded in 1907, and the Nobel Prize in neurosciences, Santiago Ramón y Cajal, was its first president. Nowadays, the CSIC is the largest public research body in Spain, and plays an active role in the science policy throughout the country. As a multidisciplinary body the CSIC covers all fields of knowledge, from basic research to advanced technological development.

The current objectives and functions of the CSIC are:

- The realization of scientific and technological research projects
- Acting as a consultant for the Public Administration in scientific matters
- Transferring results to the private sector



CSIC's central building.

- Contributing to the creation of technology-driven companies
- Training scientific and specialised personnel
- Management of infrastructure and large facilities
- Promotion of Science

The CSIC's Libraries Coordination Unit is in charge of the management of the CSIC's Libraries Network, which is formed by 96 specialized libraries, located in their respective CSIC's Research Institutes. Its principal mission lies in promoting scientific research excellence and ensuring information access to the scientific community of the CSIC.

The CSIC's Libraries Network is member of Expania, the Spanish group of Ex Libris users, which also will fulfil an active role in the next IGeLU Conference.

Read more about the 3rd IGeLU Conference at:

<http://igelu2008.csic.es>

We are looking forward to seeing you in Madrid!



Parque del Buen Retiro - Madrid, Spain.
Courtesy to Ruth L (Flickr)



Plaza de Toros - Madrid, Spain.
Courtesy to Ruth L (Flickr)



Palacio de Cristal, en primavera.
Courtesy to R.Duran (Flickr)



International Group of Ex Libris Users

IGeLU Newsletter vol 2 no 3

ISSN 1653-7904

Editors:

Ragnar Helin, Ragnar.Helin@riksdagen.se

Beate Rusch, Rusch@zib.de

Lesley Gray, lm10013@cam.ac.uk

Many of the photos in this issue are from flickr.com, licensed under Creative Commons. Thanks to all who have contributed!

WWW.IGELU.ORG

Welcome to IGeLU

IGeLU:
The International Group of Ex Libris Users

As we all know, insufficient communication is the source of much disappointment. IGeLU provides an open and transparent organization for all users of all Ex Libris products.

IGeLU: promotes information exchange among institutions that use Ex Libris products in order to enhance their library services by sharing information, documentation and resources; and represents the user community in dealings with the vendor, Ex Libris.

IGeLU is the successor organization of ICAU and SMUG.

You are invited to join IGeLU! Simply download the registration form from www.igelu.org, fax us the completed form (see fax number in the right top corner of the form), and we will send you the invoice for the 2008 annual fee (EUR 250).

Brno Short Stories

By Beate Rusch

Worry? He would certainly not describe himself as a person who worries. Small catastrophes do not ruffle him in the slightest. "You have to expect the unexpected" is perhaps his motto. That is Petr Zabicka, the team leader of the organization committee from Brno from whom we would have dearly liked to include a contribution entitled "Nightmares behind the Scenes." However, no nightmares, no article: absolutely admirable, but a pity about the article.

Yes, unfortunately the conference materials are not entirely easy to find. The presentations you will find on the IGeLU website at http://www.igelu.org/conferences/conference2007/2007_material/sessions. In a protected area (members only) you can access minutes of the ANUG and S-NUG meetings and reports on the Question & Answer Sessions. Great, that Ex Libris agreed to the publication. The product updates are posted on the Ex Libris Documentation Portal. And of course there are photos — some of the best can be viewed at flickr.com. Try your

luck with buzzwords such as IGeLU 2007 or IGeLU Brno. Looks like a funny group of people, don't you think?

Rome wasn't built in a day. This sounds strange in connection with the Internet with its need for speed and ever increasing acceleration, yet a good website requires an awful lot of hard work and this takes time. That said, the new IGeLU website will shortly make its debut. We promise. Not everything will be better, but it will certainly look better!

Some will remember the meeting in Brno for longer than others. This probably includes the VLENGEL group, and the proprietors of Pegas Beerhouse. The VLENGELS had a big souvenir to take home: for running up the largest bill of the evening (around 8000 Czech koruna = 260 Euro; admittedly, the beerhouse did also serve food), the singing software users were presented with a free barrel of beer. Were the VLENGELS still singing when they tapped the barrel? One of the many unanswered questions we may resolve in the next newsletter.