

APIs and technical services

Richard McCart

Purpose of this talk

- Use of APIs (Application Programming Interface) within technical service areas
- When Alma functionality is not yet on the roadmap
- Interaction with third parties
- Evolution of a functioning API in conjunction with Macro Express to print spine labels
- Acquisition-related APIs for orders, invoices and serials accessioning
- APIs related to Analytics
- Use of APIs within an Autolt framework
- APIs can greatly enhance the functionality and utility of Alma, especially in relation to third parties

Alma APIs

- Available as a paper
- Includes a short video

Basic Alma API setup

- Basic API setup is based on “How to create an API application to retrieve data via Alma analytics” by Yoel Kortick, available on the Developer Network
- <https://developers.exlibrisgroup.com/>
- My paper on Spine label setup “API for Barcode printing spine labels “

Building a house: traditional



Building a house : modern



Traditional tool



Modern tools



Fitting APIs into the Alma workflow

- Transfer of skills from “traditional” to “”electronic”.
- Using staff wisely in straightened times when more service is expected
- The change in work practices and philosophy brought about by Alma

Developing APIs

- Frustration, time-consuming, painful.
- Look for someone else to do it and document it
- Developers Network, Tech blog, Discussion forum
- APIs on the Alma-I email list

API for printing spinelabels

- Development from Voyager based macro
- Need for quick working solution
- Basic Macro Express setup
- SOAP API (Simple Object Access Protocol)
- RESTful API (Representational State Transfer)
- Blog article in Developers Network

Barcode video



www.rmit.edu.au

Barcode printing with Psycho soundtrack

API for delivering Analytic reports

- API set up for getting reports
- Inputting into Excel
- Formatting for Excel
- Creating an XML Mapping Schema in Excel 2010

API for serials receipts

- Problem to be solved
- Working out the individual pieces
- Proof of concept
- Developing a working solution

Developing a working API



Getting it to work



Third party APIs, other Alma APIs

- API for PeopleSoft for the transmission of invoices margaret.briandwolfe@bc.edu
- Online fine payment system
- Synchronize user data Erik Biever e-biev@umn.edu
- Database discovery application Justin Kelly jjkelly@swin.edu.au

YBP orders API

- GOBI Alma API
- Alma New Order API
- Creates POL in Alma from GOBI
- ISBN vs. YBP order key

Invoices APIs

- APIs to deliver invoices to third-party financial systems

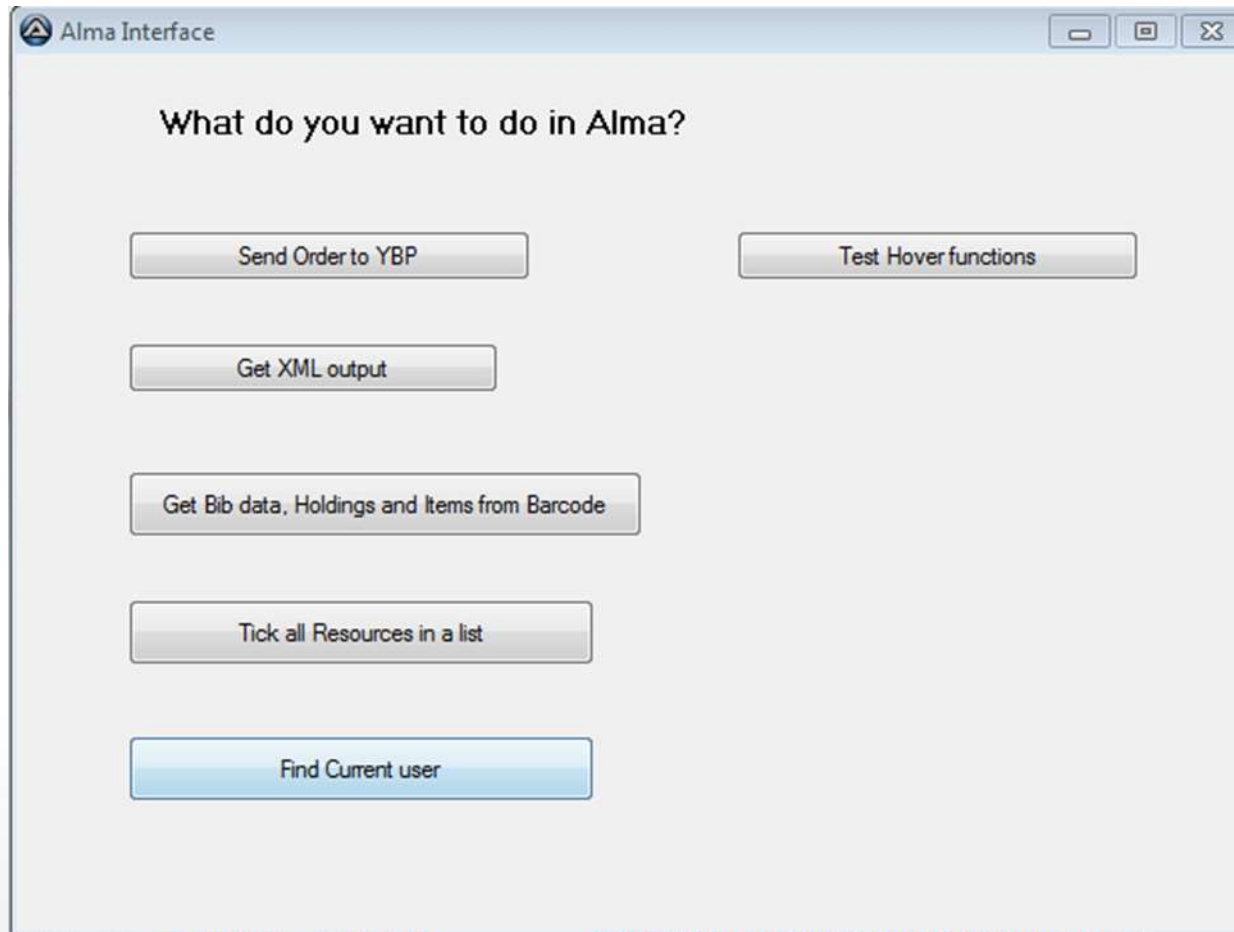
API to check ISSN info from Ulrich's

- Digital object management systems using APIs
- Ulrichs serials database for a theses submission form
- 360Ulrich's Client Center
- Publisher , Place of Publication , Refereed data for journal articles

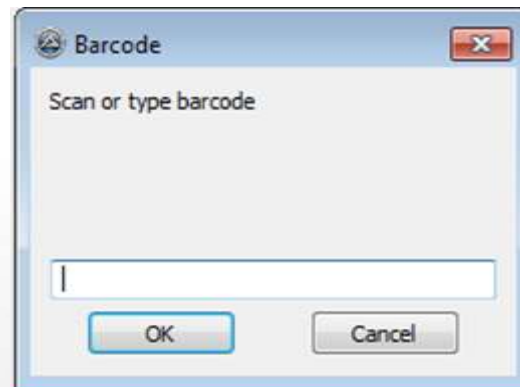
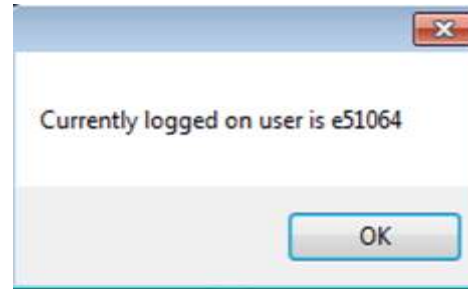
Use of AutoIt, Selenium and AutoHotKey (1)

- AutoIT is based on Selenium
- AutoHotKey is limited
- <https://www.autoitscript.com/site/autoit/>

Use of Autolt, Selenium and AutoHotKey (2)



Use of Autolt, Selenium and AutoHotKey (3)



Articles

- An API of APIs. By: Hannan, Sean. Online Searcher. May/June 2015, Vol. 39 Issue 3, p. 54-59
- APIs Unify Library Services. By: Breeding, Marshall. Computers in Libraries. Apr. 2014, Vol. 34 Issue 3, p. 22-24
- Developing Applications in the Era of Cloud-based SaaS Library Systems. By: Weisman, Josh. Code4Lib Journal. 2014, Issue 26, p. 1-1
- Enhancing Descriptive Metadata Records with Freely-Available APIs. By: Phillips, Mark; Tarver, Hannah. Code4Lib Journal. 4/16/2014, Issue 24, p. 3-3
- The fallacy of the multi-API culture. By: Verborgh, Ruben; van Hooland, Seth; Cope, Aaron Straup; Chan, Sebastian; Mannens, Erik; Walle, Rik Van de. Journal of Documentation. 2015, Vol. 71 Issue 2, p. 233-252. 20 p. DOI: 10.1108/JD-07-2013-0098.
- Homegrown WorldCat Reclamation: Utilizing OCLC's WorldCat Metadata API to Reconcile Your Library's Holdings. By: Johnston, Sarah. Code4Lib Journal. 2015, Issue 27, p. 1-1.

128 Years of Progress

Established in 1887 as the Working Men's College with the aim of bringing education to the working people of Melbourne.

In **1954**, Queen Elizabeth II granted the College royal patronage for its educational service to the Commonwealth and contribution to the war effort. We remain the only Australian higher education institution with the right to use the prefix "Royal" and the Monarchy's coat of arms.

The Royal Melbourne Institute of Technology was established as a public university in **1992**.

In **1994**, RMIT became the first Australian university to adopt a strategy incorporating the delivery of education offshore and onshore.

RMIT Vietnam University opened its doors in Ho Chi Minh City in **2001**, the first foreign-owned private university in Vietnam. A campus in Hanoi was established in **2004**.

In **2013**, landmark new buildings – Swanston Academic Building and Design Hub – opened in Melbourne.

RMIT opened a centre in Barcelona, Spain, in **2013**.

RMIT named International Education Provider of the Year 2013 and winner of Excellence in International Education – University award (inaugural Victorian International Education awards)



By the Numbers

81,570 Students

- Postgraduate research: 1,945
- Postgraduate coursework: 9,990
- Undergraduate: 49,156
- Vocational and training: 14,298
- Online (Open Universities Australia): 5,393
- Others: 788

38% International Students

- 15% studying in Australia
- 23% studying outside Australia

Applications per place (UG and PG): 8.3

First-year retention rate: 85.17 per cent

First-year success rate: 87.65 per cent



By the Numbers

Financial Performance

Annual revenue: A\$1,078 million

Net operating result: A\$75.5 million

Total assets: A\$2,683 million

EBITDA (Earnings before Interest, Taxes, Depreciation and Amortisation):
14.0%

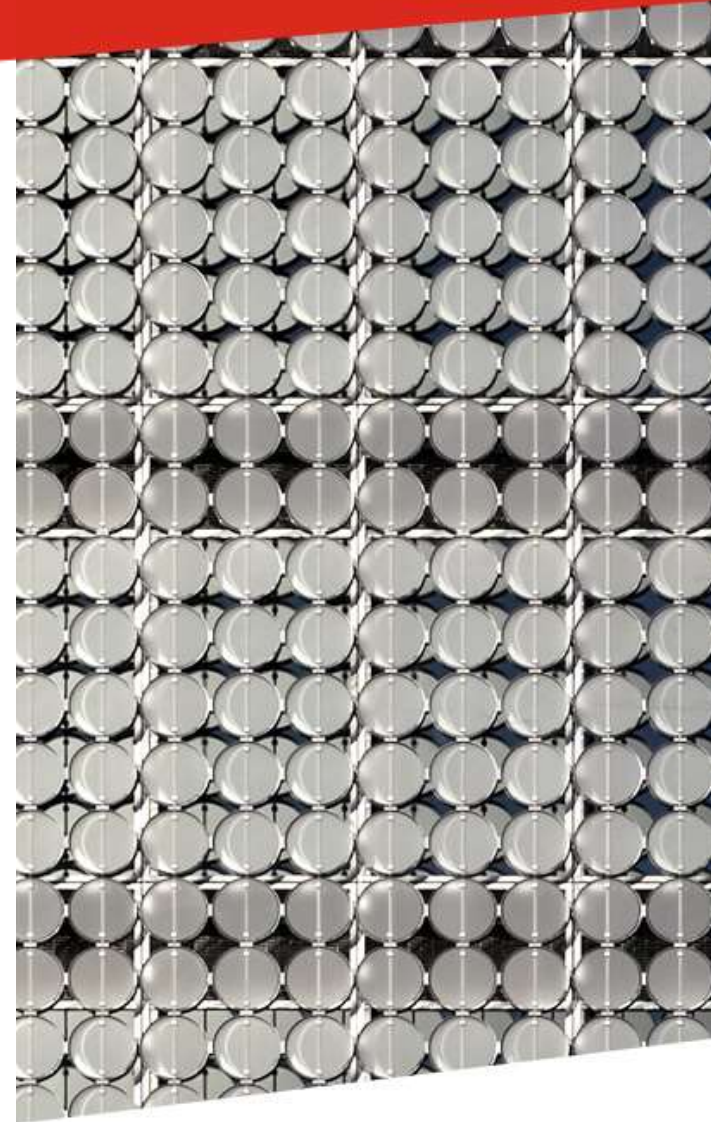
Staff

5,426 FTE (full-time equivalent), Australia, Vietnam and Barcelona
(Academic and Teaching 2,644; Professional and Executive 2,782)

Facilities

Melbourne: 425,080 square metres

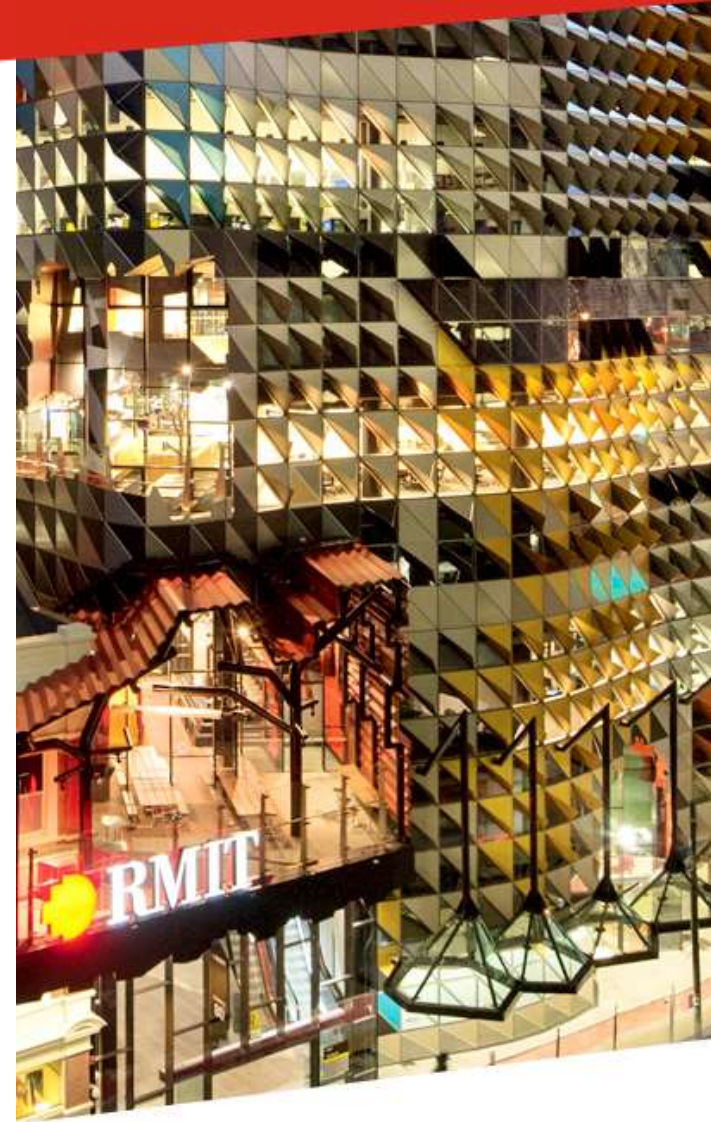
Vietnam: 40,441 square metres



RMIT Quarter Melbourne CBD

RMIT's City campus has long been part of the fabric of Melbourne's Central Business District, presenting an edgy architectural mix of the old and the new that is surrounded by, and integrated with, all that the city has to offer.

- Covers 8.2 hectares in the heart of the Melbourne CBD
- Represents 6.6 per cent of the CBD footprint



Bundoora Campus (Melbourne)

7,069 students

Home to RMIT's Health Innovations Research Institute

Core learning and teaching fields include:

- Biological sciences
- Medical radiations
- Pharmacy and pharmaceutical sciences
- Chinese medicine
- Nursing
- Education
- Automotive and aerospace engineering
- Mechanical engineering



Brunswick Campus (Melbourne)

2010 students

Core learning and teaching fields include:

- Education
- Fashion
- Merchandising
- Textile technologies



Saigon South Campus (Ho Chi Minh City)

6,263 students – both Vietnam campuses

Core learning and teaching fields include:

- Accountancy
- Business information systems
- Commerce
- Economics and finance
- Electronic and computer engineering
- Fashion and textile merchandising
- Information technology and multimedia design
- International business
- Marketing
- MBA and Executive MBA
- Professional communication
- Project management



Hanoi Campus

Core learning and teaching fields include:

- Accountancy
- Commerce
- Economics and Finance
- English
- Information technology
- Marketing
- Professional communication



Questions?

Thank You