



Chair's report on IGeLU activities

4rd Annual Meeting in Helsinki
September 2009

Jirka Kende

Annual meeting in Helsinki, 2009



Welcome to the conference!

464 participants from 200 member institutions and 31 countries:

Australia, Austria, Belgium, Brazil, Czech Republic, Denmark, Estonia, Finland, France, Germany, Greece, Hungary, Iceland, Ireland, Israel, Italy, Luxembourg, Netherlands, New Zealand, Norway, Poland, Portugal, Romania, Russian Federation, Slovenia, South Africa, Spain, Sweden, Switzerland, United Kingdom, USA.

Guests from Japan, Nigeria and Pakistan

Who performed IGeLU's activities?

Steering Committee

Fiona Burton, Lukas Koster, Michele Newberry, Beate Rusch, and Clare Whittaker with the support of our treasurer (and more) Guido Badalamenti

PWG Coordinators

Gerard Bennett for ALEPH and Michael Fake for Voyager, Guido Goedemé for Digitool, Meg Bate for MetaLib, Mark Dehmlow for SFX, Andreas Sabisch for Verde and Mandy Stewart for Primo

SIWG Coordinators

Peter Klien for Aleph Consortia, Marcus Zerbst for ARC, Ari Rouvari for MetaLib / SFX Consortia and Marc Wilhelm for Special libraries

Other active members of the PWGs and SIWGs and volunteers

Enhancing Communication

Standard channels of communication working well

- Communication with ELUNA
- Information exchange on EL Commons
- Communication with the user community
- Twittering on <http://twitter.com/igelu>

Product and Special Interest Working Groups

New challenges

- New Primo PWG
- Surveys about the expectations on the next generation products
- Cross PWG activities
- New Enhancement platform

Basic tasks remain

Development cooperation with Ex Libris I

Basic Agreement on Enhancements of the Central Knowledge Bases

- Lists of planned and requested resources
- 6-8 weeks voting cycle with rolling "me too" system
- Top regional resources determined in a rolling fashion
- Main goals: transparency, prioritizing by the user community, regulated process for the implementation of "regional resources"
- Joint voting process for IGeLU and ELUNA

Development cooperation with Ex Libris II

Collaboration on URM

- Focus groups agreement in Denver
- Call for volunteers, overwhelming response
- Focus groups on Selection and Acquisitions, Metadata Management, Consortia and Shared Systems, Fulfilment and Patron Management
- URM workshops throughout the conference

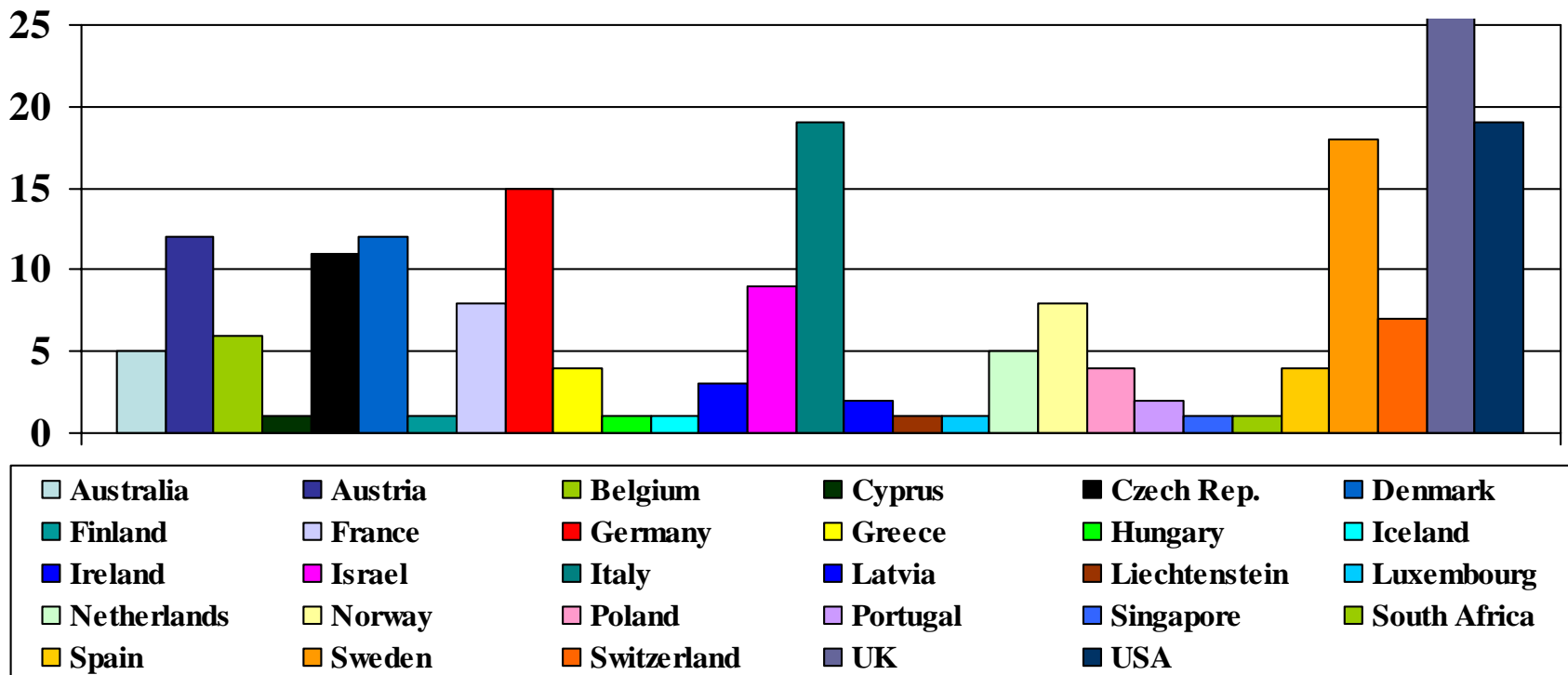
Verde

Final Turnaround

- Shifting development from Verde to URM
- Negotiations with Ex Libris about the transition period
- Classification of existing Support Incidents
- Prioritizing of SIs for possible implementation

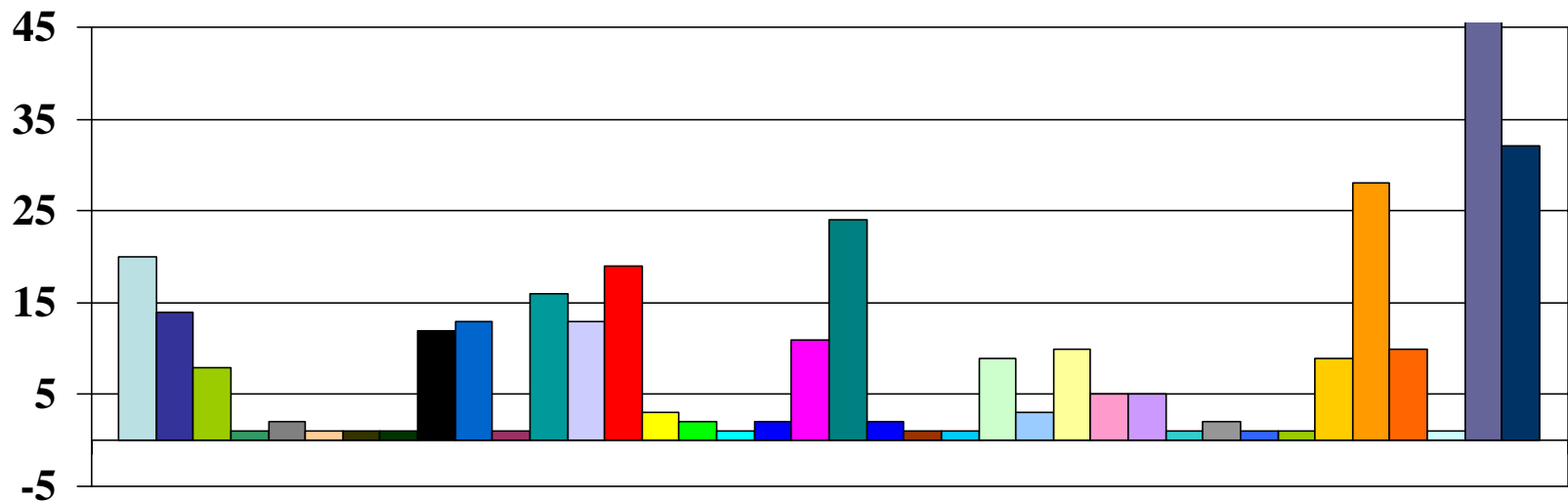
Membership at the 1th IGeLU meeting 2006

Total = 210



Membership at the 4th IGeLU meeting 2009

Total = 338



□ Australia	■ Austria	■ Belgium	■ Brazil	■ Canada	■ Chile	■ Croatia
■ Cyprus	■ Czech Rep.	■ Denmark	■ Estonia	■ Finland	■ France	■ Germany
■ Greece	■ Hungary	■ Iceland	■ Ireland	■ Israel	■ Italy	■ Latvia
■ Liechtenstein	■ Luxembourg	■ Netherlands	■ New Zealand	■ Norway	■ Poland	■ Portugal
■ Rep.Korea	■ Romania	■ Singapore	■ South Africa	■ Spain	■ Sweden	■ Switzerland
■ Taiwan	■ UK	■ USA				

IGeLU Membership

Steady growth

- As of August 2009: 338 member institutions from 38 countries
- New countries represented: Brazil, Croatia and Estonia
- Significant increase of members from Sweden, UK and Finland
- High representation from: UK (49), USA (32), Sweden (28), Italy (24), Germany (20), Australia (19), Finland (16), Austria (14), Denmark, France (13 each), Czech Republic (12), Israel (11), Norway, Switzerland (10 each)

Budget

Budget 2008 and 2009:

Surplus due to increase of membership

Draft budget 2010: [2010_DRAFT_IGeLU.xls](#)

Balanced draft budget in spite of expected increase of activities

➔ **Membership fee stays stable, reducing conference fee!**

Voting on the Steering Committee and Chair

2009: three open positions:

- The terms of Beate Rusch, Clare Whittaker and Jirka Kende expired
- Candidacy still open for all positions

Poster by Peter Klien: Exercises in democracy: uncovering the mysteries of IGeLU elections

Voting on the Steering Committee and Chair

- **Monday:** pick up your voting slips and the proxy votes at the registration desk
- **Tuesday morning:** at 9:00 during the Assembly of Members:
 - Introduction of the candidates for the Chair and the SC
 - Voting for the **Chair** during the session
- **Tuesday afternoon:** at 14:00 during the session IGELU Activities:
 - Announcement of the results of the Chair Election
- **Tuesday afternoon till Wednesday noon:** Voting for the Steering Committee
 - box at the registration desk
- **Wednesday afternoon:** at 16:30 during the Closing Session
 - Announcement of the results of SC Election

Organizational issues

- IGeLU beyond URM?
- Conjunction with System seminars beyond 2011?
- Birds of a feather do stick together

Don't forget the questionnaire, voting slips and URM workshops!

Annual meeting in Helsinki, 2009

**Many thanks to the small but extremely
efficient Helsinki Organizing Team ...**

Kristiina Hormia-Poutanen

Ari Rouvari

Annu Jauhiainen

Jukka Pennane

Päivi Järvinen

Tarja Mäkinen

... and to the Helsinki Program Planning Group!

Jeremy Acland, Gerard Bennett, Meg Bate, Jesus Bustamante, Luis Costa, Richard Cross, Nikki Crowster, Mark Dehmlow, Michael Fake, Carol Fuchs, Guido Goedemé, Matthias Gross, Margunn Haugland, Annu Jauhiainen, Peter Klien, Inga Overkamp, Ari Rouvari, Michael Ryan, Andreas Sabisch, Naomi Steinberger, Mandy Stewart, Habib Tabatabai, Marcus Zerbst

**Together with the members of the IGeLU Steering Committee,
with special thanks to Clare Whittaker and Michele Newberry!**

Annual meeting in Helsinki, 2009



IGeLU Annual Meeting 2010

**The 5th IGeLU Annual meeting
will take place from
August 30th - September 1th 2010
in Gent, Belgium
at the
Ghent University Library**

Introduction of the host in the Closing session!

Annual meeting in Helsinki, 2009

igelu
International
Group of Ex Libris Users

Thank you!