

# Leganto analytics: success through collaboration

IGELU September 2022

Laura MacNeil & Angela Laurins  
University of Edinburgh



THE UNIVERSITY *of* EDINBURGH



RESOURCE LISTS

# Overview

- Introductions
- Sharing knowledge & working together
- Challenges & benefits
- Reports & dashboards
- Key questions
- Time for questions



# Laura MacNeil, Information Systems Analyst

- In post Feb 2020 (new role)
- Alma & Primo support
- Accessibility
- Analytics
- Analytics COP & Leganto Analytics Focus Group



# Angela Laurins, Library Learning Services Manager

- Using Leganto (Resource Lists) since June 2017
- Resource Lists preferred route to managing materials for teaching
- Leganto PWG
- Limited analytics before data analyst in post
- No capacity (or capability!)



# Aims & objectives

Robust and reliable analytics to:

1. Support operational processes
2. Inform & support policy decisions
3. Support funding & recruitment
4. Support engagement activity
5. Reply to ad hoc demands



# Our Approach

- Recognised complimentary skills
- Weekly meetings
- Shared testing (manual cross check)
- Iterative process
- Learning from experience
- Co-created reports & dashboards



# Challenges

- Working out what was *really* needed?
  - Counts v insights
  - Practical application v interesting to know
- Lack of expertise or lack of functionality?
- Understanding data – course codes, list structure, processes, messy data
- Understanding definitions— student views, material type, citation material type, resource material type



# Benefits of collaboration

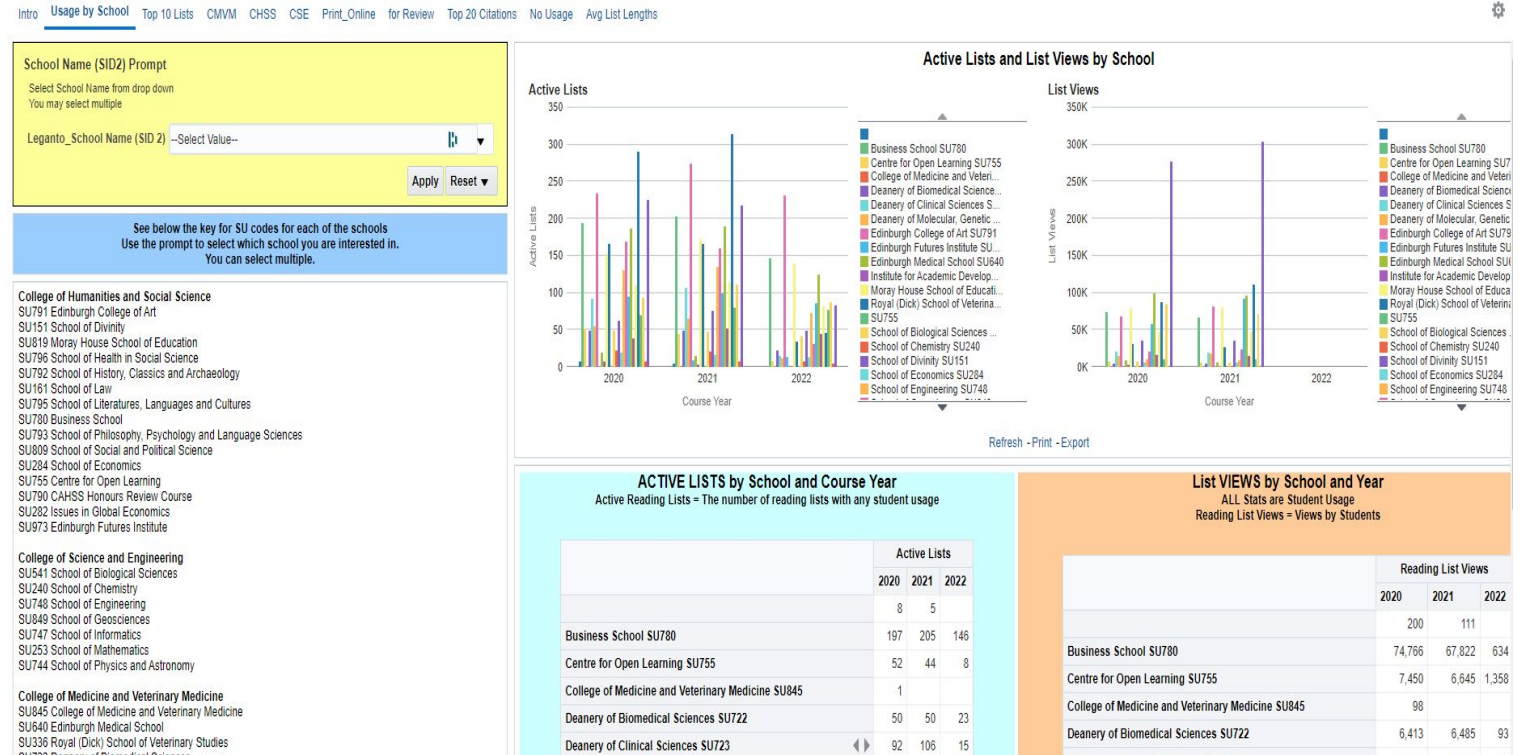
- Confidence that reports are reliable and methodology is robust
- Foundation on which to build future reports
- Both have better understanding of analytics capabilities
- Mutual understanding of data
- Opportunity to engage with wider community
- Responsiveness to ad hoc requests
- Opportunity to reduce role as gatekeeper





# Output: set of dashboards

1. Operational
2. Usage & Engagement
3. Schools



# 1. Operational dashboard

## Reports:

- Counts:
  - Number of lists
  - Number of courses with lists
- Lists not associated with a course
- Lists sent for review
- Lists with Digitisation tag
- Lists with Key text tag



# Counts

Count of Reading Lists by Semester

**PIVOT\_Course Reserves\_Count List Codes by Semester**

Course Year is not null  
 and Processing Department is equal to / is in Leganto Team  
 and Leganto Publication List Visibility is not equal to / is not in Archived , Deleted , Draft  
 and Course Code is not equal to / is not in EXLIBRIS\_DEFAULT\_COURSE  
 and Searchable ID 2 is equal to SU 945 , SU151 , SU161 , SU240 , SU253 , SU282 , SU284 , SU336 , SU429 , SU541 , SU640 , SU722 , SU723 , SU724 , SU741 , SU744 , SU747 , SU748 , SU755 , SU780 , SU791 , SU792 , SU793 , SU795 , SU796 , SU809 , SU819 , SU845 , SU849 , SU945 , SU946 , SU973 , su792

Reading List Status	2016		2016 Total		2017		2017 Total		2018		2018 Total		2019		2019 Total		2020		2020 Total		2021		2021 Total		Grand Total										
	Semester 1	Semester 2			Autumn	Semester 1	Semester 2	Yearly			Autumn	Semester 1	Semester 2	Yearly			Autumn	Semester 1	Semester 2	Yearly			Semester 1	Semester 2		Summer	Yearly								
	0	0	0	0	0	0	0	0	0	0	0	0	0	0	0	0	0	0	0	0	0	0	0	0	0	0									
Being Prepared					8	38	172	141	70	429	24	1	168	184	111	482	10	257	294	1	140	692	2	413	392	163	943	362	369	160	881	3,417			
Complete					8	53	437	493	206	1,197	59		516	536	308	1,395	21	758	771		374	1,900		791	790	366	1,931	1	797	819	338	1,934	8,348		
Ready For Processing													1		1										2	6				2	10	11			
<b>Grand Total</b>	<b>0</b>	<b>0</b>	<b>0</b>	<b>0</b>	<b>16</b>	<b>91</b>	<b>609</b>	<b>634</b>	<b>276</b>	<b>1,626</b>	<b>83</b>	<b>1</b>	<b>685</b>	<b>720</b>	<b>419</b>	<b>1,878</b>	<b>31</b>	<b>1,015</b>	<b>1,065</b>	<b>1</b>	<b>514</b>	<b>2,592</b>	<b>2</b>	<b>0</b>	<b>1,204</b>	<b>1,182</b>	<b>529</b>	<b>2,874</b>	<b>1</b>	<b>1,161</b>	<b>1,194</b>	<b>0</b>	<b>500</b>	<b>2,825</b>	<b>11,776</b>

Count of Reading Lists by Year

**PIVOT\_Course Reserves\_Count List Codes**

Course Year is not null  
 and Processing Department is equal to / is in Leganto Team  
 and Leganto Publication List Visibility is not equal to / is not in Archived , Deleted , Draft  
 and Course Code is not equal to / is not in EXLIBRIS\_DEFAULT\_COURSE  
 and Searchable ID 2 is equal to SU 945 , SU151 , SU161 , SU240 , SU253 , SU282 , SU284 , SU336 , SU429 , SU541 , SU640 , SU722 , SU723 , SU724 , SU741 , SU744 , SU747 , SU748 , SU755 , SU780 , SU791 , SU792 , SU793 , SU795 , SU796 , SU809 , SU819 , SU845 , SU849 , SU945 , SU946 , SU973 , su792

Reading List Status	2016	2017	2018	2019	2020	2021	Grand Total
	0	0	0	0	0	0	0
Being Prepared		429	482	692	943	881	3,417
Complete		1,197	1,395	1,900	1,931	1,934	8,348
Ready For Processing			1			10	11
<b>Grand Total</b>	<b>0</b>	<b>1,626</b>	<b>1,878</b>	<b>2,592</b>	<b>2,874</b>	<b>2,825</b>	<b>11,776</b>

Count of Courses by Year

**PIVOT\_Course Reserves\_Count Course Codes**

to / is in Leganto Team  
 is not in EXLIBRIS\_DEFAULT\_COURSE  
 is not equal to / is not in Archived , Deleted , Draft  
 and Searchable ID 2 is equal to SU 945 , SU151 , SU161 , SU240 , SU253 , SU282 , SU284 , SU336 , SU429 , SU541 , SU640 , SU722 , SU723 , SU724 , SU741 , SU744 , SU747 , SU748 , SU755 , SU780 , SU791 , SU792 , SU793 , SU795 , SU796 , SU809 , SU819 , SU845 , SU849 , SU945 , SU946 , SU973 , su792

Course Status	2016	2017	2018	2019	2020	2021	Grand Total
Active	2	9,784	5,530	6,394	6,145	6,303	6,883
Inactive	2	11,478	5,857	6,913	6,570	2	30,820
<b>Grand Total</b>	<b>2</b>	<b>11,479</b>	<b>5,857</b>	<b>6,913</b>	<b>6,570</b>	<b>6,884</b>	<b>37,702</b>

Count of Courses with Published Lists

**Course Reserves\_Courses with Published Lists**

Processing Department is equal to / is in Leganto Team  
 and Course Year is not null  
 and Course Code is not equal to / is not in EXLIBRIS\_DEFAULT\_COURSE  
 and Leganto Publication List Visibility is not equal to / is not in Archived , Deleted , Draft  
 and Searchable ID 2 is equal to SU 945 , SU151 , SU161 , SU240 , SU253 , SU282 , SU284 , SU336 , SU429 , SU541 , SU640 , SU722 , SU723 , SU724 , SU741 , SU744 , SU747 , SU748 , SU755 , SU780 , SU791 , SU792 , SU793 , SU795 , SU796 , SU809 , SU819 , SU845 , SU945 , SU946 , SU973 , su792

Course Year	2016	2017	2018	2019	2020	2021	Grand Total
Associated with Reading List							
No	2	10,049	4,057	4,413	3,683	3,963	26,166
Yes		1,430	1,800	2,502	2,887	2,921	11,539
<b>Grand Total</b>	<b>2</b>	<b>11,479</b>	<b>5,857</b>	<b>6,913</b>	<b>6,570</b>	<b>6,884</b>	<b>37,702</b>



# Lists sent for review

ORACLE Analytics

EUL - NEW Leganto Operatio...

Home Catalog Favori

Prompts for Course Year and Date Sent for Review

Course Reserves\_Lists Sent for Review\_Num Citations

Course Year is equal to 2021, 2022 and Processing Department is equal to / is in Leganto Team and Leganto Last Sent for Library Review Date (Calendar) is greater than or equal to 01/07/2022

Course Year: 2021,2022  
Date(s) Sent for Review between: 01/07/2022

Reading List Code	Reading List Name	Course Code	Course Name	Course Term	School (Mapped)	Number Of Participants	Number Of Citations	Course Instructor With Primary Identifier	Leganto Review Requester Name and ID	Reading List Status	Leganto Last Sent for Library Review Date (Calendar)
0.03562471305433701	Music, Racism and Western Ideology	MUSI101162022-3SV1SEM1	Music, Racism and Western Ideology	Semester 1	Edinburgh College of Art	0	63	168796 - Grant, Morag	168796 - Grant, Morag	Ready For Processing	20/07/2022
0.04918263526818656	Commodities of Empire: Colonialism, Ecology, Culture	ENUI112652022-3SS1SEM1	Commodities of Empire: Colonialism, Ecology, Culture	Semester 1	School of Literatures, Languages and Cultures	0	26	254866 - Bhattacharya, Sourit	254866 - Bhattacharya, Sourit	Ready For Processing	28/07/2022
0.06449987216185238	The English Discovery of Russia, 1553-1648	HIST104642022-3SV1SEM1	The English Discovery of Russia, 1553-1648	Semester 1	School of History, Classics and Archaeology	0	179	256594 - Zhukova, Tatyana	256594 - Zhukova, Tatyana	Ready For Processing	01/08/2022
0.09115621088345005	Representations of Blackness in Britain and Europe, 1800 - 1950	HIST104802022-3SS1YR	Representations of Blackness in Britain and Europe, 1800 - 1950	Yearly	School of History, Classics and Archaeology	0	89	253334 - Rowe, Rochelle	253334 - Rowe, Rochelle	Ready For Processing	06/07/2022
0.09499971050827372	From Perception to Cognition: A Journey in Colour	PSYL101662022-3SV1SEM1	From Perception to Cognition: A Journey in Colour	Semester 1	School of Philosophy, Psychology and Language Sciences	0	9	182512 - Martinovic, Jasna	182512 - Martinovic, Jasna	Ready For Processing	27/07/2022
0.12488532377716788	Business Transformation in the Digital Age (MBA)	CMSE115622022-3SS1SB2	Responsible Management of Digital Innovation	Semester 1	Business School	36	22	177808 - Curchod, Corentin	177808 - Curchod, Corentin	Ready For Processing	05/07/2022
0.17422243752099176	Illustration 3B: All in the Plan	DESI100842022-3SV1SEM2	Illustration 3B: All in the Plan	Semester 2	Edinburgh College of Art	27	5	146714 - Roscoe, Lucy	146714 - Roscoe, Lucy	Ready For Processing	04/07/2022
0.3116129665661944	Language and Intercultural Communication Pedagogy	EDUA114132022-3SS1SEM1	Language and Intercultural Communication Pedagogy	Semester 1	Moray House School of Education	77	54	251022 - Simpson, Ashley	251022 - Simpson, Ashley	Ready For Processing	01/08/2022
0.3267841590562479	Archaeology 2A	ARCA080132022-3SV1SEM1	Archaeology 2A: Scotland before History	Semester 1	School of History, Classics and Archaeology	53	148	141741 - Romankiewicz, Tanja	141741 - Romankiewicz, Tanja	Ready For Processing	04/07/2022
0.333506662103689	Rheumatology	IMED110272021-2SS1SEM2	Rheumatology	Semester 2	Deanery of Clinical Sciences	19	51	123750 - Parry, Frances	254113 - Garcia, Madeline	Ready For Processing	01/07/2022
0.4194976366744676	Renal Medicine	IMED110152021-2SS1SEM2	Renal Medicine	Semester 2	Deanery of Clinical Sciences	24	37	123750 - Parry, Frances	254113 - Garcia, Madeline	Ready For Processing	01/07/2022
0.4357070264069087	Syntactic variation and competition	LASC101112022-3SV1SEM1	Guided Research in Linguistics and English Language A	Semester 1	School of Philosophy, Psychology and Language Sciences	119	11	119173 - Van Bergen, Linda	8601 - Heycock, Caroline	Ready For Processing	04/07/2022
0.49164698878668855	Introduction to Participatory Methods	EFIE111062022-3SV1SEM1	Introduction to Participatory Methods (fusion on-site)	Semester 1	Edinburgh Futures Institute	0	13	176982 - Elsdon, Chris	176982 - Elsdon, Chris	Ready For Processing	05/07/2022
		EFIE111072022-3SV1SEM1	Introduction to Participatory Methods (fusion online)	Semester 1	Edinburgh Futures Institute	0	13	176982 - Elsdon, Chris	176982 - Elsdon, Chris	Ready For Processing	05/07/2022
0.6507879903489184	Respiratory	IMED110132021-2SS1SEM2	Respiratory	Semester 2	Deanery of Clinical Sciences	27	50	123750 - Parry, Frances	254113 - Garcia, Madeline	Ready For Processing	01/07/2022
0.6635601691892394	Culture, Heritage and Learning Futures	EFIE110592022-3SV1SEM1	Culture, Heritage and Learning Futures (fusion	Semester	Edinburgh Futures	0	49	117303 - Ross, Jen	117303 - Ross, Jen	Ready For	19/07/2022

EUL - NEW Leganto Operational Dash: CHECK\_Lists Sent for Review > Course Reserves\_Lists Sent for Review\_Num Citations



THE UNIVERSITY of EDINBURGH

# 2. Engagement dashboard

## Reports:

- Student views
- Active lists
- Usage by School/College
- Usage by course (citation views)
- Instructor activity



# Alma course info – Searchable ID (SID) Mapping

< Manage Course Information

Cancel

Course Information | Instructors | Notes | Campus

Alt + 1

Code \*

Name \*

Processing Department \*

Status  Inactive  Active

Start date

Number of participants:

Year

Searchable IDs

<input type="text" value="SSPS07003"/>	<input type="text" value="SU755"/>
<input type="text" value="UG"/>	<input type="text" value="Distance Learning=N"/>
<input type="text" value="CHSS"/>	<input type="text" value="SSPS07003SS1LLL3"/>
<input type="text"/>	<input type="text"/>
<input type="text"/>	<input type="text"/>

Section

Academic Department

Terms list

End date

Weekly hours

**SID 1 – Root Course Code**  
**SID 2 – School Code**  
**SID 3 – Postgrad/Undergrad etc**  
**SID 4 – Course Delivery Method**  
**SID 5 – College Code**  
**SID 6 – Course Code matching**  
**– for rollover**



# Active Lists & List Views - Overview

## Active Lists and List Views by College (Course Year prompted)

### COLLEGES

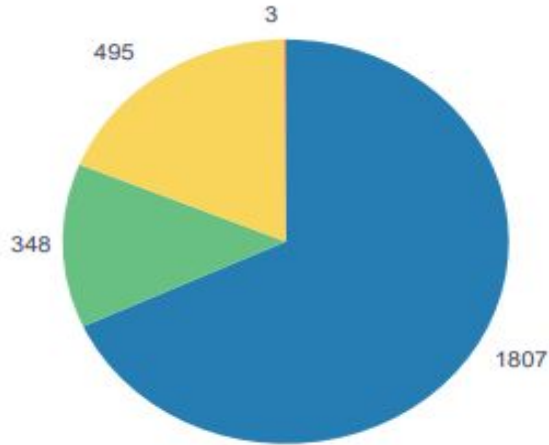
CHSS - College of Humanities and Social Sciences  
 CMVM - College of Medicine and Veterinary Medicine  
 CSE - College of Science and Engineering  
 IAD - Institute for Academic Development

Explanatory text for College acronyms

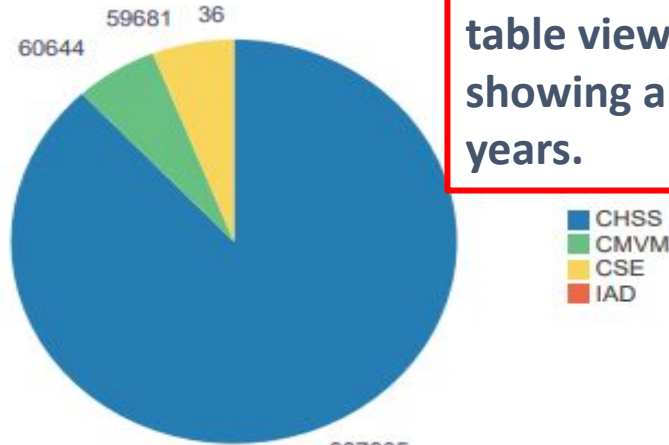
Course Year

Prompt by Year

### Active Lists Per Coll - List Views Per Coll



Active Reading Lists



Number of Reading List Views

No. Active Lists  
 No. List Views – repeated in table view showing all years.

## ACTIVE LISTS by College and Course Year

Active Reading Lists = The number of reading lists with any student usage

Course Year	Active Lists				Active Lists
	CHSS	CMVM	CSE	IAD	
2017	981	240	112	8	1,341
2018	1,117	232	275	5	1,629
2019	1,546	376	451	3	2,376
2020	1,720	379	486	8	2,592
2021	1,807	348	495	3	2,653
Grand Total	7,136	1,570	1,811	23	10,539

## List VIEWS by College and Year

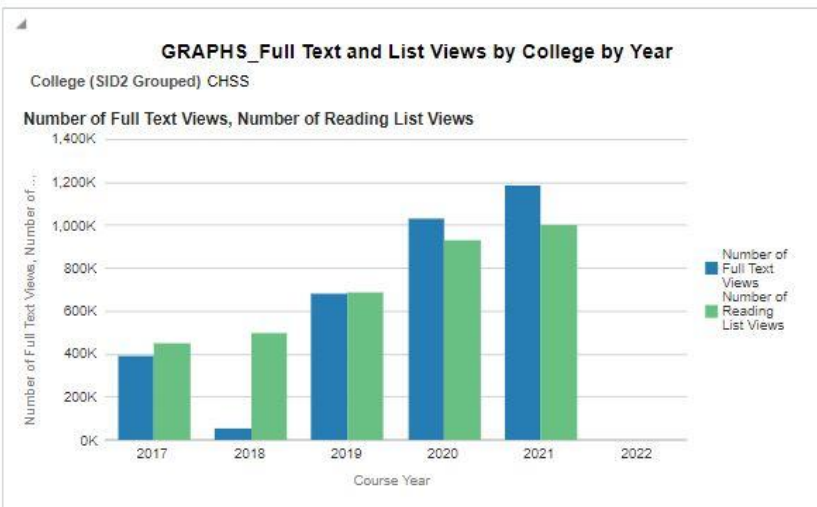
ALL Stats are Student Usage  
 Reading List Views = Views by Students

Course Year	Reading List Views				Reading List Views
	CHSS	CMVM	CSE	IAD	
2017	449,827	40,650	10,547	66	501,090
2018	499,241	30,977	28,546	936	559,700
2019	685,347	54,390	52,047	836	792,620
2020	923,308	82,757	68,763	2,754	1,077,582
2021	887,905	60,644	59,681	36	1,008,266
Grand Total	3,445,628	269,418	219,584	4,628	3,939,258

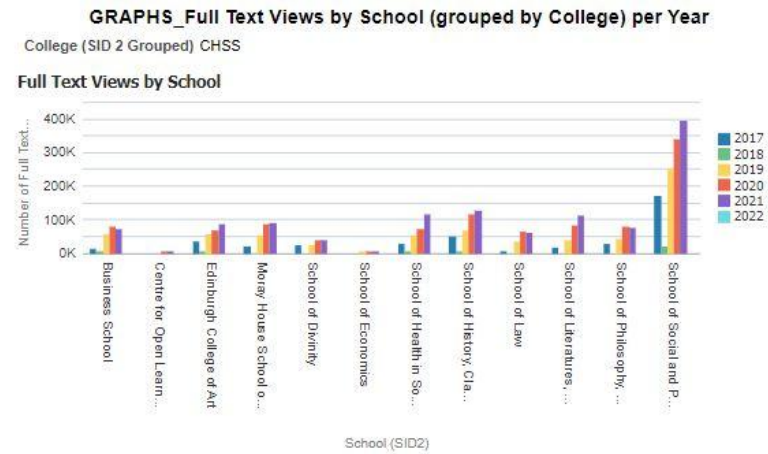
Over 1 million List Views



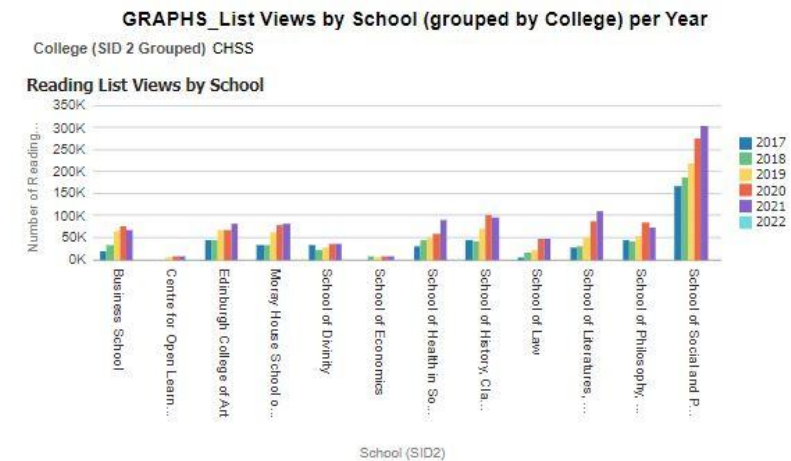
# Views – Full Text/List by College & School



Full Text AND List Views by year (College selected at prompt level)



Full text views by school (Grouped by college selected in prompt)



List views by school (Grouped by college selected in prompt)





# 3. Schools dashboard

## Reports:

- Usage by School
- Top 10 lists
- College tabs
- Print / Online
- Top 20 citations
- No usage
- Average list lengths



# Usage by School dashboard tab – showing "mapped" prompt

Intro Usage by School Top 10 Lists CMVM CHSS CSE Print\_Online for Review Top 20 Citati

**School Name (SID2) Prompt**  
Select School Name from drop down  
You may select multiple

Leganto\_School Name (SID 2) --Select Value--

- Business School SU780
- CAHSS Honours Review Course SU790
- Centre for Open Learning SU755
- College of Medicine and Veterinary Medicine SU845
- Deanery of Biomedical Sciences SU722
- Deanery of Clinical Sciences SU723

**See below**  
**Use the prompt**

**College of Humanities and Social Sciences**  
SU791 Edinburgh College of Art  
SU151 School of Divinity  
SU819 Moray House School of Education  
SU796 School of Health in Social Science  
SU792 School of History, Classics and Archaeology  
SU161 School of Law  
SU795 School of Literatures, Languages and Cultures  
SU780 Business School  
SU793 School of Philosophy, Psychology and Language Sciences  
SU809 School of Social and Political Science  
SU284 School of Economics  
SU755 Centre for Open Learning  
SU790 CAHSS Honours Review Course  
SU282 Issues in Global Economics  
SU973 Edinburgh Futures Institute

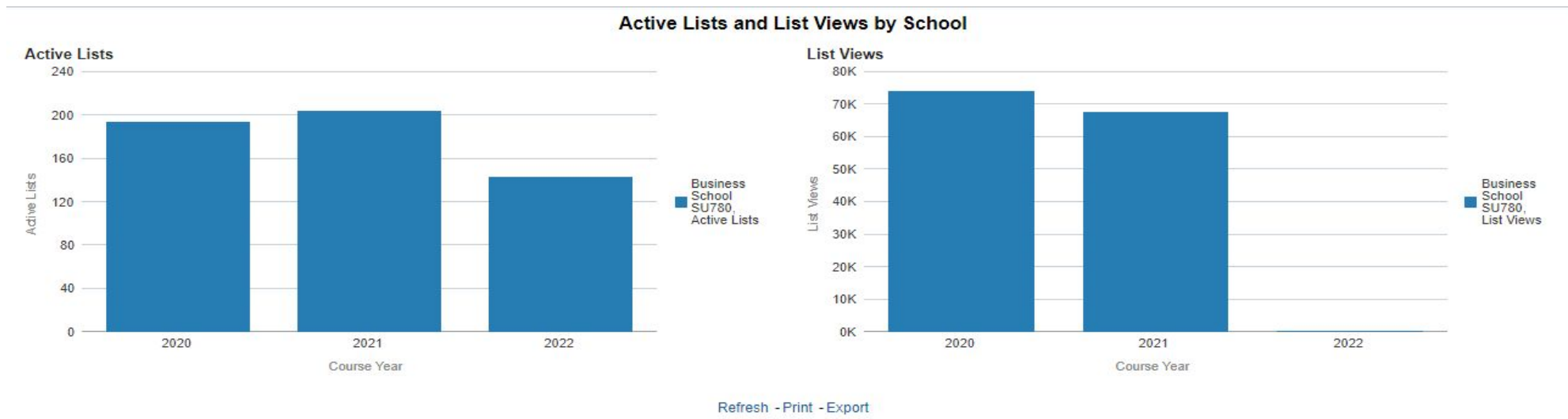
**College of Science and Engineering**  
SU541 School of Biological Sciences  
SU240 School of Chemistry  
SU748 School of Engineering  
SU849 School of Geosciences  
SU747 School of Informatics  
SU253 School of Mathematics  
SU744 School of Physics and Astronomy

**PROMPT – Uses column formula to map SID2 (School Code to School Name)**

**TEXT BOX on dashboard– Provides School and College mapping for user reference when selecting prompt**



# Schools Dash – Usage by School Prompted



Page uses Dashboard prompt - by School

**ACTIVE LISTS by School and Course Year**  
Active Reading Lists = The number of reading lists with any student usage

	Active Lists		
	2020	2021	2022
Business School SU780	197	206	143
Grand Total	197	206	143

Refresh - Print - Export

ACTIVE LISTS - Graph and Table

**List VIEWS by School and Year**  
ALL Stats are Student Usage  
Reading List Views = Views by Students

	Reading List Views		
	2020	2021	2022
Business School SU780	74,763	67,997	456
Grand Total	74,763	67,997	456

LIST VIEWS - Graph and Table



# Schools Dash – Top 10 Lists

Key for School Code and Name mapping

School Name (SID2) School of Divinity	DEFINITIONS
<p><b>College of Humanities and Social Science</b>            SU791 Edinburgh College of Art            SU151 School of Divinity            SU819 Moray House School of Education            SU796 School of Health in Social Science            SU792 School of History, Classics and Archaeology            SU161 School of Law            SU795 School of Literatures, Languages and Cultures            SU780 Business School            SU793 School of Philosophy, Psychology and Language Sciences            SU809 School of Social and Political Science            SU284 School of Economics            SU755 Centre for Open Learning            SU790 CAHSS Honours Review Course            SU282 Issues in Global Economics            SU973 Edinburgh Futures Institute</p>	<p><b>Number of Citation Views</b> = The total number of times users have accessed the full view of a citation  <b>Activity Score</b> = The average number of citations interacted with by each student  <b>Reading List Views</b> = The total number of reading list views  <b>Total Events</b> = The total number of events that a user performed who accessed Leganto from both a CMS and by permalinks  <b>Reading List Number of Participants</b> = The number of participants on the reading list  <b>Active Students</b> = The number of students that interacted with the citation in any way, for example, selected, liked, commented, or viewed the material  <b>Active Citations</b> = The active citations of the reading list</p>
	<p>Top 10 Lists by Citation Views</p>
	<p>Top 10 Lists by List Views</p>
	<p>Top 10 Lists by Activity Score</p>
<p><b>College of Science and Engineering</b>            SU541 School of Biological Sciences            SU240 School of Chemistry            SU748 School of Engineering            SU849 School of Geosciences            SU747 School of Informatics            SU253 School of Mathematics            SU744 School of Physics and Astronomy</p> <p><b>College of Medicine and Veterinary Medicine</b>            SU845 College of Medicine and Veterinary Medicine            SU640 Edinburgh Medical School            SU336 Royal (Dick) School of Veterinary Studies            SU722 Deanery of Biomedical Sciences            SU723 Deanery of Clinical Sciences            SU724 Deanery of Molecular, Genetic and Population Health Sciences</p> <p><b>Institute for Academic Development</b>            SU945            SU946</p> <p><b>OTHER</b>            SU429 Registry            SU741 External Credits</p>	<p>Top 10 Lists by Total Events</p>

Text from Knowledge base explaining data definitions

Choice of "Top 10" lists by varying criteria



# Key questions

1. What percentage of 'suitable' courses have a Resource List?
2. How much Resource List content is provided online?



# Key question 1: Percentage of 'suitable' courses with Resource Lists

- Resource Lists not 'suitable' for all courses
- Process of identifying and removing 'unsuitable' courses
- Exclusion list includes terms such as: 'project', 'placement', 'field work', 'dissertation', 'portfolio' & others
- Used file as filter in Alma Analytics
- Report generated and exported from Alma
- One off report - not included on dashboard

Out of 6844 courses  
4956 were 'suitable'

Of these 61% had  
Resource Lists



# Key question #2: How much Resource List content is provided online?

(our **BIG** question)

**Online means:** content on Resource Lists which is available online either provided by the library or hosted externally, including:

- E-books
- Ejournal articles
- E-reserve scans
- Websites & blogs
- Streaming media



# Four assumptions

1. **Not covered + no URL** = No access
2. **Not covered + URL** = Online external content
3. **Covered + no URL** = Physical content (BUT could be e-books & ejournal articles ?)
4. **Covered + URL** = Online (includes scans provided for teaching)

***Citation Covered by Library** - Indicates if the citation is available through the library, either as part of the library's holdings or as a resource that is subscribed to by the library (SOURCE: Ex Libris Knowledge Centre)*





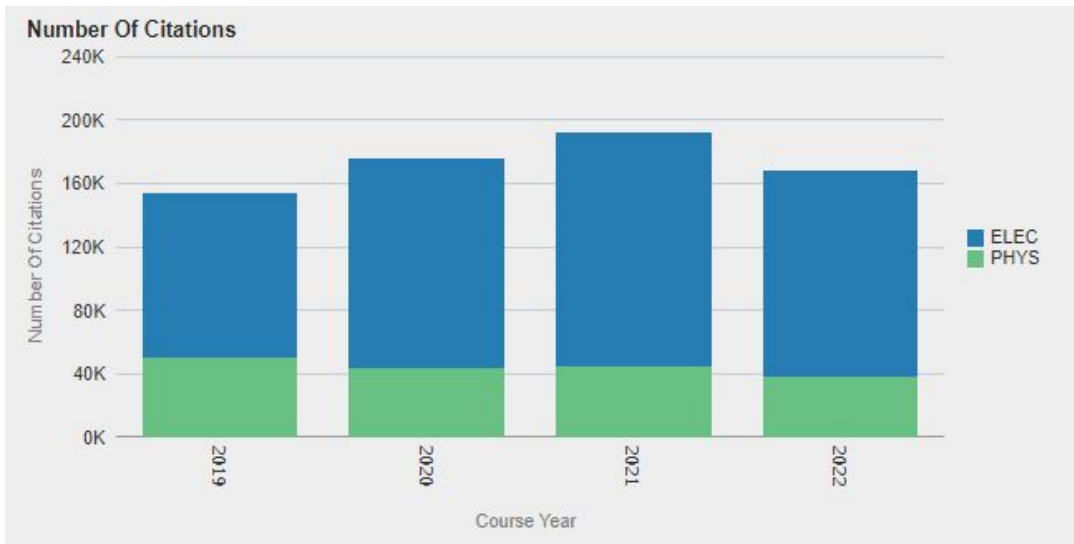
# Additional Groupings

- Identified Citation Material types that we could satisfactorily assume were online = **E-book/Case/Document**
- Identified Resource Types that we assumed were online = **Book-Electronic**
- Combined with identification of Citation Source URL
- Created SQL query to group these identified values

```
CASE WHEN "Reading List Citations"."Citation Material Type" IN ('E-book', 'Case', 'Document') OR  
"Bibliographic Details"."Resource Type" IN ('Book - Digital', 'Book - Electronic') OR  
CONCAT("Reading List Citation"."Citation Source 1", "Reading  
List Citation"."Citation Source") LIKE concat(concat('%', 'http'), '%') THEN 'ELEC' ELSE 'PHYS' END
```



# Schools Dashboard – Print/Online



Overall:  
**77%** Online  
**86%** "Essential "Online

Essential Citations - Print/Online  
 Citation Public Tag contains term "Essential"

	Number Of Citations		Number Of Citations	
	ELEC	PHYS	ELEC	PHYS
2019	27,133	8,313	76.5%	23.5%
2020	35,082	6,501	84.4%	15.6%
2021	37,748	6,238	85.8%	14.2%
2022	34,350	5,799	85.6%	14.4%

Refresh - Print - Export

Shows Print (Physical) v Online (Elec) citations by Academic year

Graph and table show the same information.

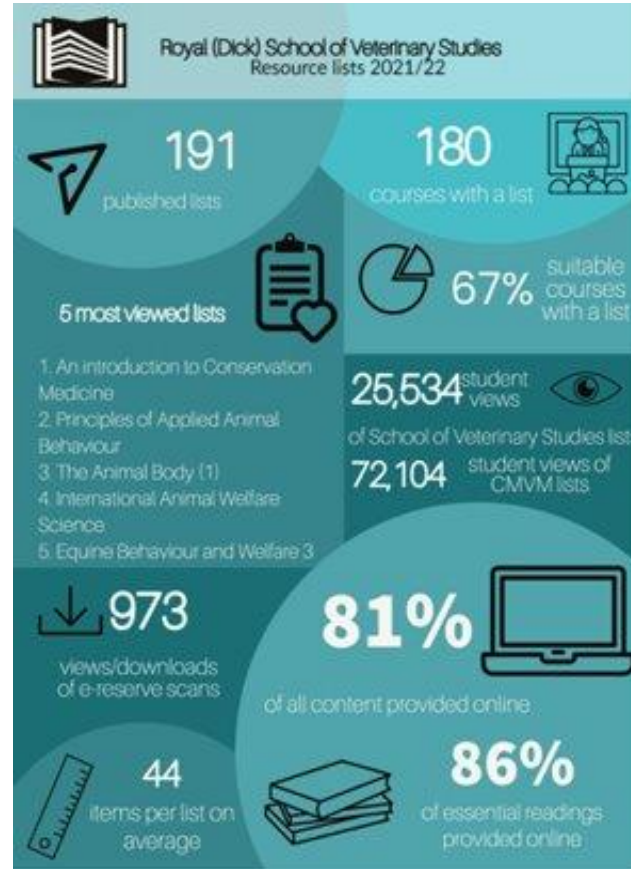
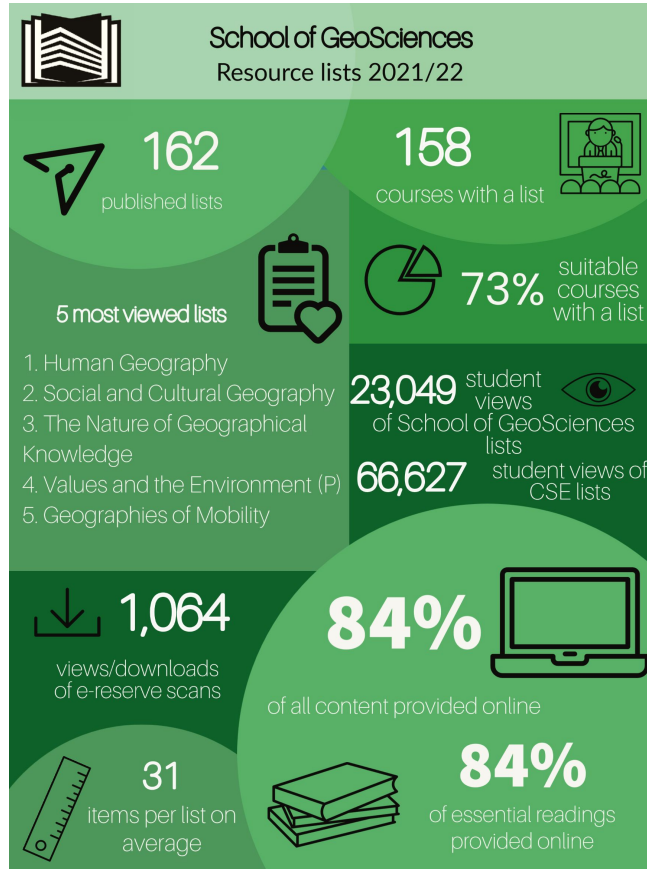
Table provides raw numbers and percentages.

% of Citations tagged as "Essential" which are available online

Course Year	Number Of Citations		Number Of Citations		Number Of Citations	Number Of Citations
	ELEC	PHYS	ELEC	PHYS		
2019	103,511	50,303	67.3%	32.7%	153,814	100.0%
2020	132,482	43,356	75.3%	24.7%	175,838	100.0%
2021	147,636	44,803	76.7%	23.3%	192,439	100.0%
2022	129,843	38,035	77.3%	22.7%	167,878	100.0%



# Mission accomplished!



**Thank you**  
Questions and/or  
answers welcome  
[Laura.MacNeil@ed.ac.uk](mailto:Laura.MacNeil@ed.ac.uk)  
[Angela.Laurins@ed.ac.uk](mailto:Angela.Laurins@ed.ac.uk)

