



SFX WG updates

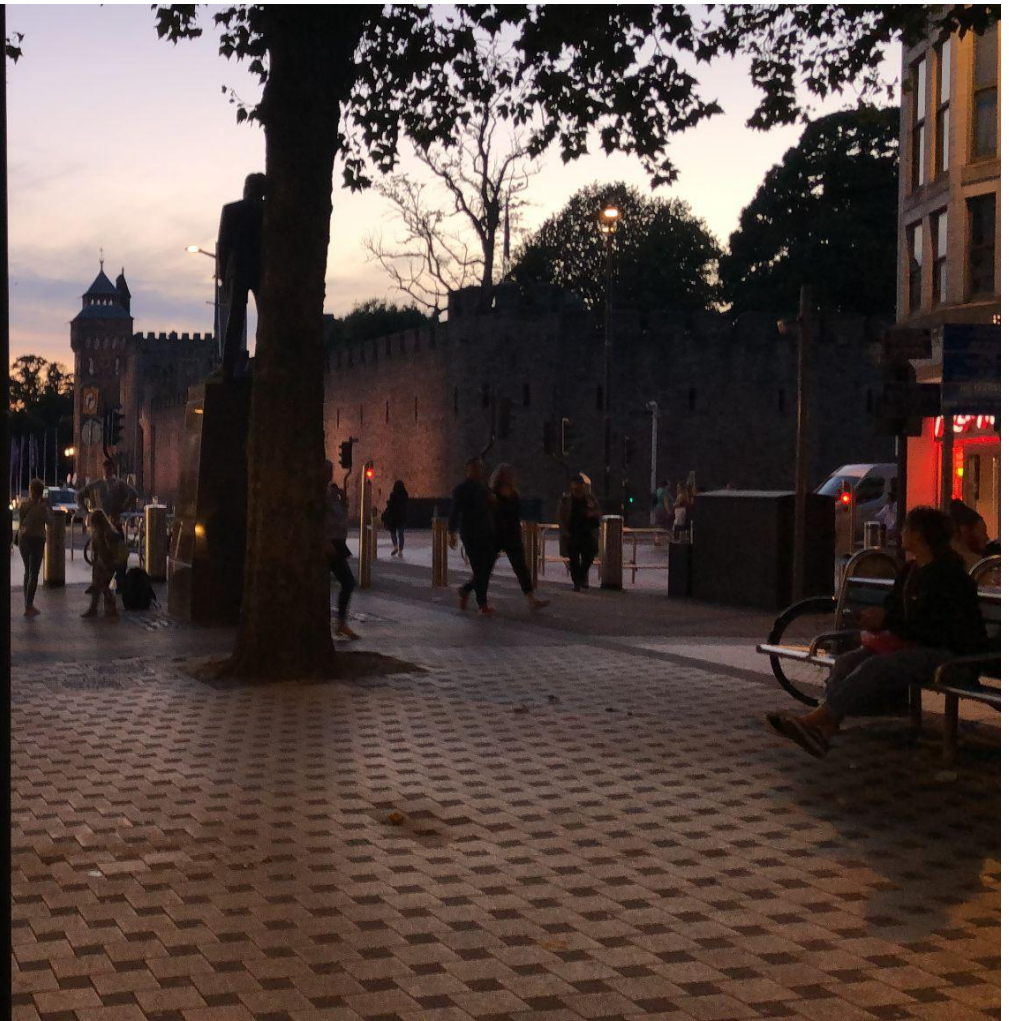
IGeLU 2022 hybrid conference

Jiří Pavlík, National Library of Technology, Czech Republic, SFX WG chair



ROYAL WELSH COLLEGE
OF MUSIC & DRAMA
COLLEGI BRENHINOL
CERDDO A DRAMA CYMRU

Her Majesty The Queen,
Elizabeth II
1926 - 2022



SFX WG updates

- regular SFX WG monthly on-line meetings
 - regular Content WG monthly on-line meetings
- KBART automation
 - Wiley, Elsevier, Ovid are running fine
 - Taylor & Francis e-books are coming
 - IEEE, ... need encouraging via CWG

SFX WG updates

- AHA replacing NERS
 - AHA system review
 - before running voting round in AHA SFX PWG will agree on requests worth voting about

SFX WG needs you!



- join the team and get benefits
 - monthly meetings with SFX product manager Christine Stohn, friendly discussions of current topics and issues
 - content working group monthly meetings and an opportunity to discuss enrichments in CKB
 - ELUNA and IGeLU conferences organising and getting organiser's benefits, sponsored trips to conferences

SFX WG needs you!



- particularly SFX users from Japan, China, Costa Rica are invited

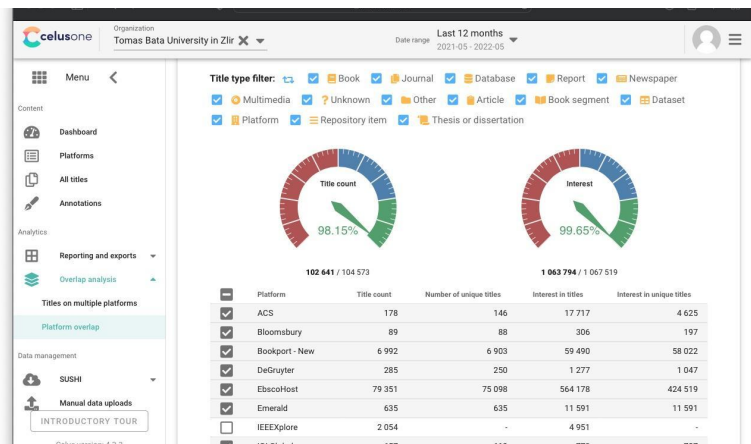
CELUS updates

- UStat replacement, harvesting and analysis of COUNTER statistics, powerful yet simple and affordable solution
- <https://www.celus.one>
- What's new
 - new advanced reporting
 - export sushi credentials for credentials back up
 - tags for journals, platforms, organisations - coming soon ...

**THE
NEW
SCHOOL**

CELUS Tomas Bata University use-case

- come to join the session tomorrow 2:10 - 2:40 pm
- Simon Gibson Studio



SFX product update

- yesterday's session was recorded
 - the recording will be available within the conference recordings

AOB

- skipping regular September meeting
 - next SFX WG meeting on October 27th
 - 3:30 pm CEST
 - on-line on Google Meet
 - running minutes on Google Docs



IGELU
Conference

12th - 15th September 2022

**Thank you for
your attention**



Jiří Pavlík

jiri.pavlik@techlib.cz