

Business Analysis in the Library, *a use case in implementing the RFID Live Scanning Wand for stocktake*

Presented by Lisa McIntosh and Caroline Serrano



THE UNIVERSITY OF
SYDNEY

library.sydney.edu.au

We recognise and pay respect to the Elders and communities – past, present, and emerging – of the lands that the University of Sydney's campuses stand on. For thousands of years they have shared and exchanged knowledges across innumerable generations for the benefit of all.





Australia's first University

74,000 students

8,100 staff

QS 2024 World Ranking = 19

The Library enriches the student University experience

2022

The Library supports excellence in research and education



13 Sites

Collections and Study

Camden Commons
Conservatorium
Fisher
Law
SciTech
SWHB
The Quarter

Technology

CreateSpace
ThinkSpace

Learning Hubs

Abercrombie
Brennan MacCallum
Carslaw East
PNR

Unique collections

Rare Books
East Asian Collection
Digital Collections

Millions of people visit our spaces each year

Over **1.9 million** visitors in 2022



Library staff provide **valuable research support** for all staff and students

541 drop-in support registration

1263 research consultations

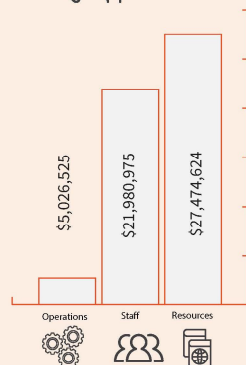
1253 realtime workshop registrations

2,000 views of our How To videos

114 Subject guides

6,899 enrolments for research skills courses

Costs of Service



Staff and students **have access to millions of resources** held in our collections

56% of our collections are electronic

Over **4 million** books



245,910 journals

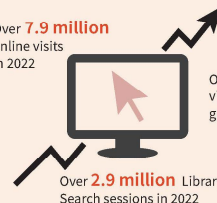
229,786 other information sources

Approx. 300,000 items in Rare Books & Special Collections

Over 800 Databases to support research and education

Students connect to services and resources via **the Library website**

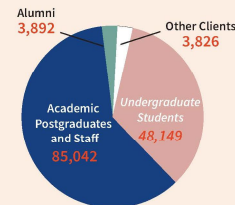
Over **7.9 million** online visits in 2022



Over **2 million** views of subject guides in 2022

Over **2.9 million** Library Search sessions in 2022

Students, staff, and alumni engage with physical collections, with **140,909 items borrowed**



The open-access eScholarship Repository **facilitates collaboration and enables easy access** to scholarly materials and data



Access to specialist eJournals and eBooks drives world-class research and student learning

Over **4.4 million** eBook requests

Over **15.6 million** eBooks and eJournal articles accessed in 2022



Over **11 million** eJournal article downloads



Library staff offer **virtual and in person frontline support** to all our staff and students

6,285 support tickets answered

8,734 virtual Live Chats

50,330 in person interactions with clients across 11 Library Information service points

Keeping students **connected to their Unit of Study Readings**

Over **1.98 million** reading list views

3,521 reading lists



63,272 citations

56,302 active students

"Technology-led innovation"



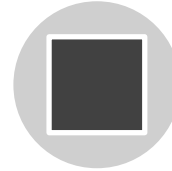
24 HOUR OPENING



RFID



MODERN
SYSTEMS



CLEAN DATA



OPPORTUNITIES?

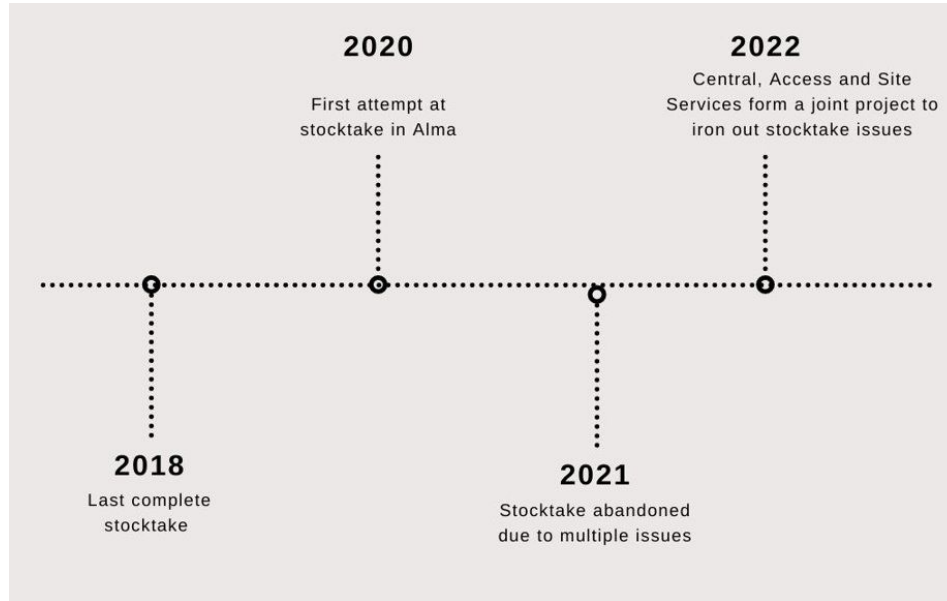


What is business analysis?

Business Analysis is a disciplined approach for introducing and managing change to organization

Business analysis is used to identify and articulate the need for change in how organizations work, and to facilitate that change.

Identified need for change



Approaching that change



Reflect Regularly

**Engage All
Relevant
Stakeholders**

**Understand What
is Doable**

**Set Clear
Objectives and
Outcomes**

Work Sustainably

How it works (LSW demo)

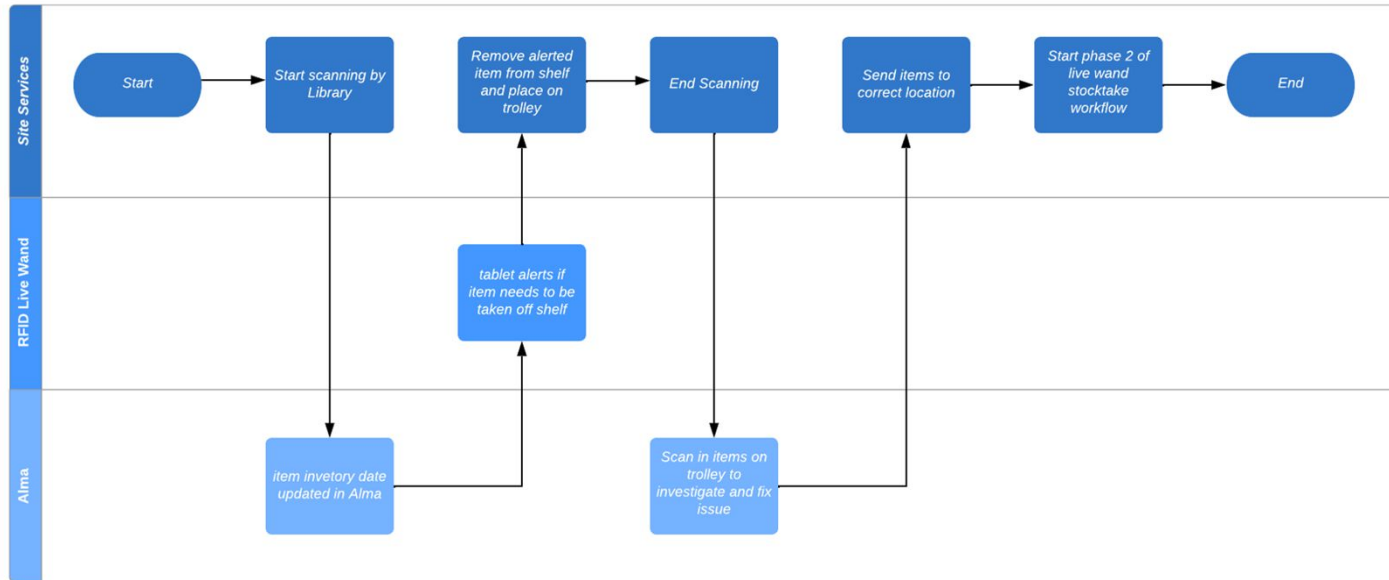
- Shows size of kit
- Shows content of the kit
- Shows how the live scanning wand works including the display of exceptions
- Shows the realtime update in Alma



Workflows (Stocktake Phase 1)

Live Wand Stocktake Workflow - Phase 1

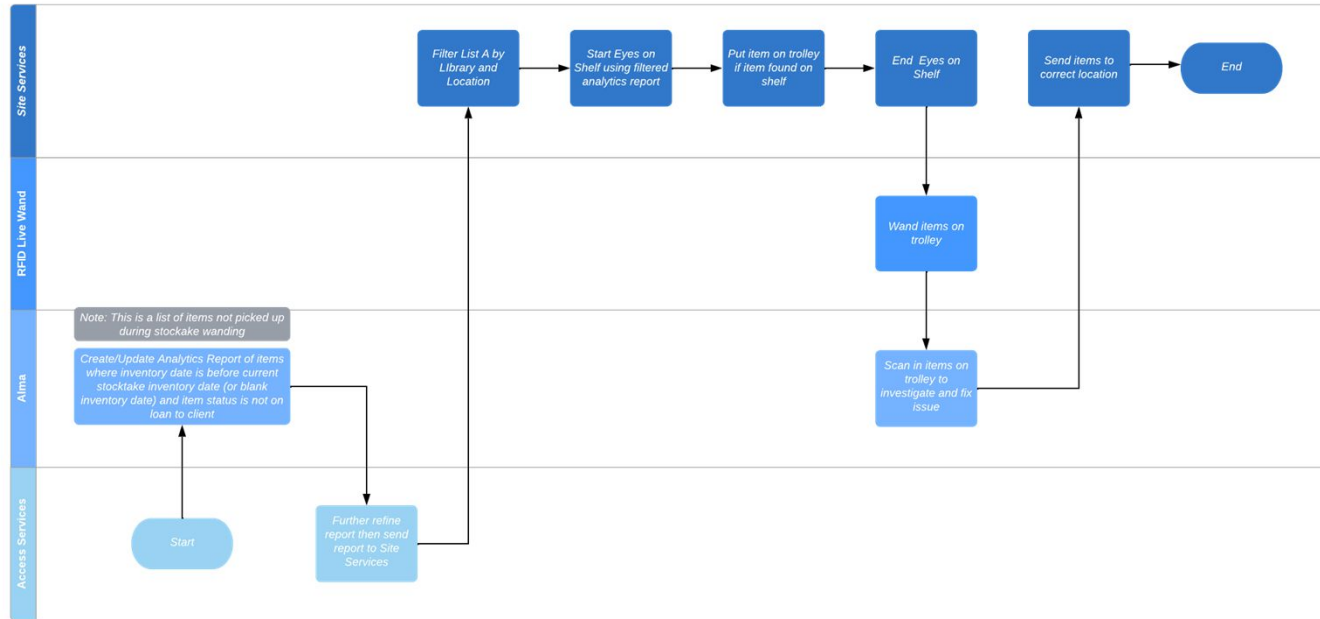
Caroline Serrano | August 30, 2023



Workflows (Stocktake Phase 2)

Live Wand Stocktake Workflow - Phase 2

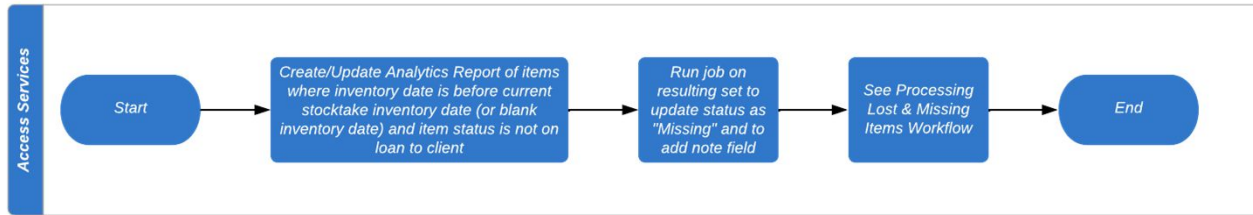
Caroline Serrano | August 30, 2023



Workflows (Stocktake Phase 3)

Live Wand Stocktake Workflow - Cleanup

Caroline Serrano | August 30, 2023

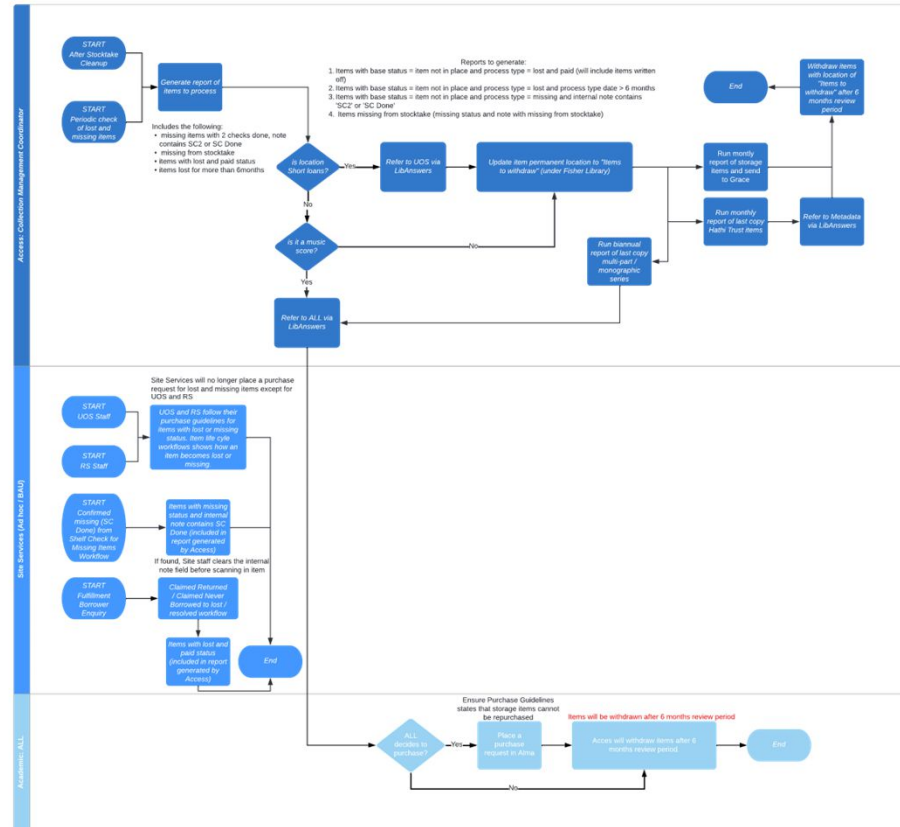


You can email me for the full set of workflow diagrams

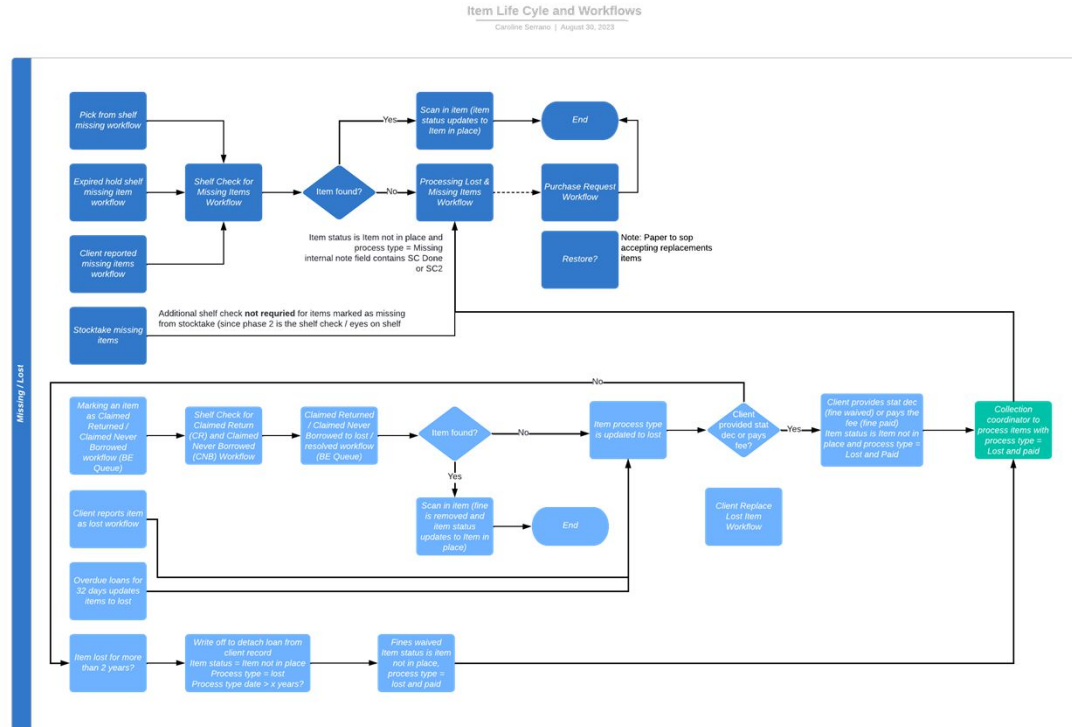
Workflows – Processing Lost & Missing Items

Processing Lost & Missing Items Workflow

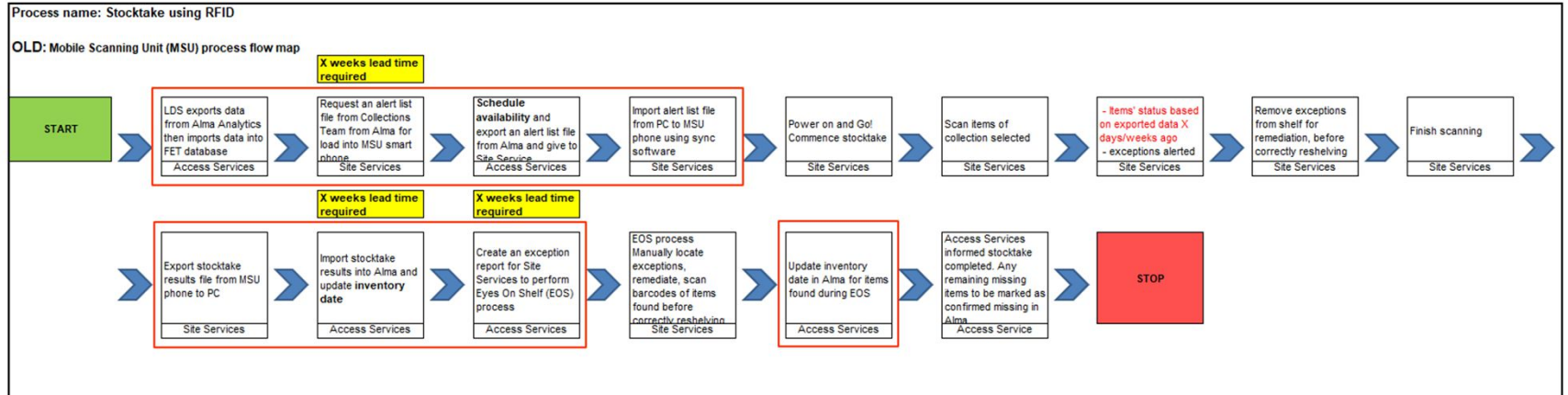
Caroline Serrano | August 30, 2022



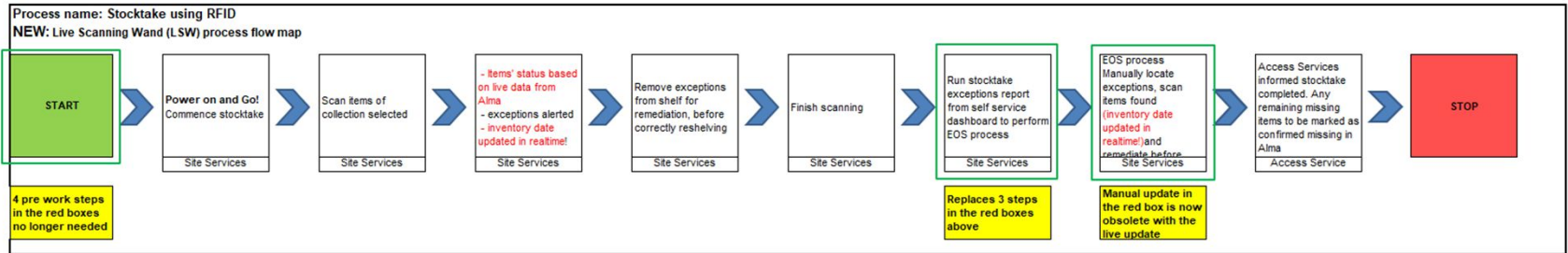
Workflows – Item Life Cycle and Workflows



Stocktake Value Stream Map – Old Process



Stocktake Value Stream Map – New Process



Stocktake numbers and timings

Key highlights



Level 9 – East Asian Collection
Approx 35,000 items
2 wands used

	# of staff	scan duration	EOS duration
Old Process (MSU)	2-4	10 days	10 days
New Process (LSW)	2	3 days	2 days

Conclusion / Lessons Learnt



**Communicate
Frequently**



Collaboration



**Continuous
Improvement**



**Engage
Stakeholders
Continuously**



**Define Roles and
Responsibilities**

Questions?

Access Services

Lisa McIntosh, Director
lisa.mcintosh@sydneyu.edu.au

Access Services, Library Digital Services

Caroline Serrano, Digital Services Analyst
Caroline.serrano@sydney.edu.au

<https://www.library.sydney.edu.au/>