

ExLibris
Part of **Clarivate**

IGOLU
International Group of Ex Libris Users

Alma, Rapido & Higher Education Platform

Asaf Kline
VP Academic Library Solutions

Looking Ahead: 2023 to 2025

PERSONALIZE

Innovate library experiences



CONNECT

Expand reach and connect communities & institutions

ANALYZE

Generate insights through a global data network

ENGAGE

Introduce new standards for engagement



6 Degrees of Connection





A World of Connected Products

Agenda



What did we hear that you need for the future?



What have we already achieved since last IGeLU?



What will the world of connected product portfolio look like?



How is the portfolio integration strategy changing how we work with you?



What Did We Hear that You Need for the Future?



Streamline workflows across Ex Libris / Clarivate portfolio

Seamless handoff between products for automated workflow

New services for our users based on cross-product integration

Enriched and higher quality metadata across all products

Leverage the data on research and course materials to make smarter decisions



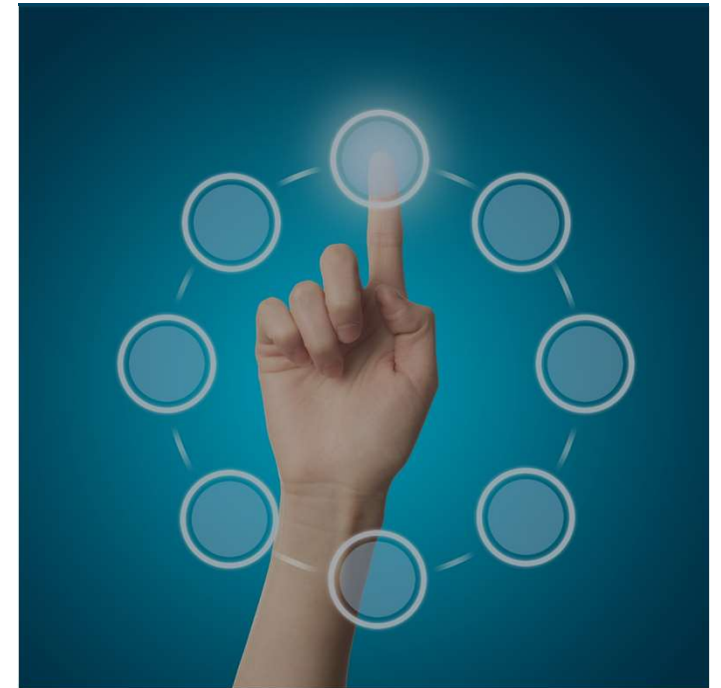
Free to Connect, Free to Choose



We believe every library needs



Connection

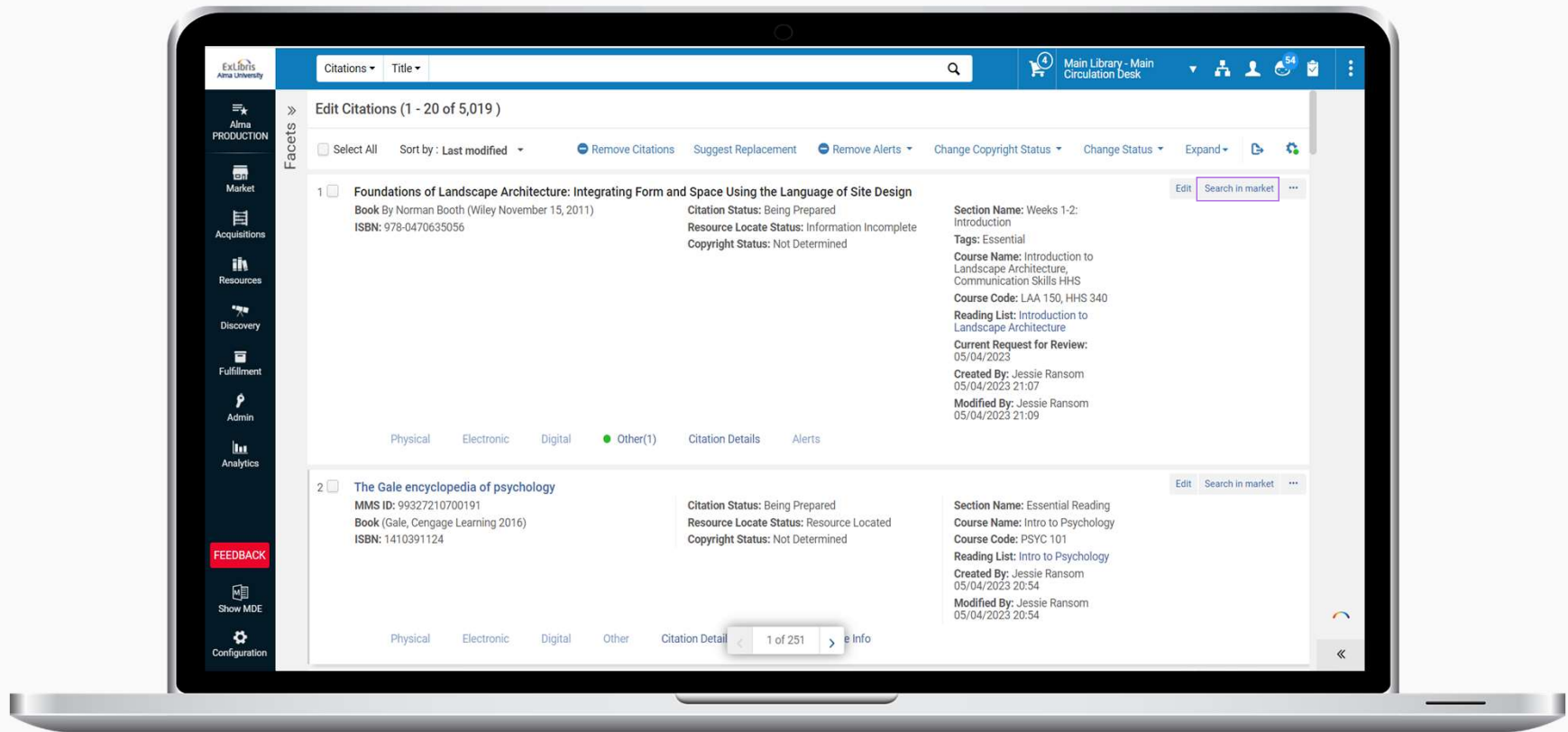


Choices



**What have we already achieved
since the last IGeLU?**

Easier to Purchase Course Materials



Integration with Web of Science

The screenshot displays the Alma QA interface with a search for 'biochemistry'. The main content area shows a list of journal records, including 'ACS bio & med chem Au.', 'ACS chemical biology.', and 'ACS pharmacology & translational science.'. A side panel on the right, titled 'Journal Citation Reports™', provides JCR metrics for the displayed records, including the Journal Citation Indicator (2021: 0.85) and a table of JCR Category, Rank, and Quartile.

JCR Category	Rank	Quartile
BIOCHEMISTRY & MOLECULAR BIOLOGY	103/322	Q2

Source: Journal Citation Reports™ 2021



What Will the World of Connected Products Look Like?

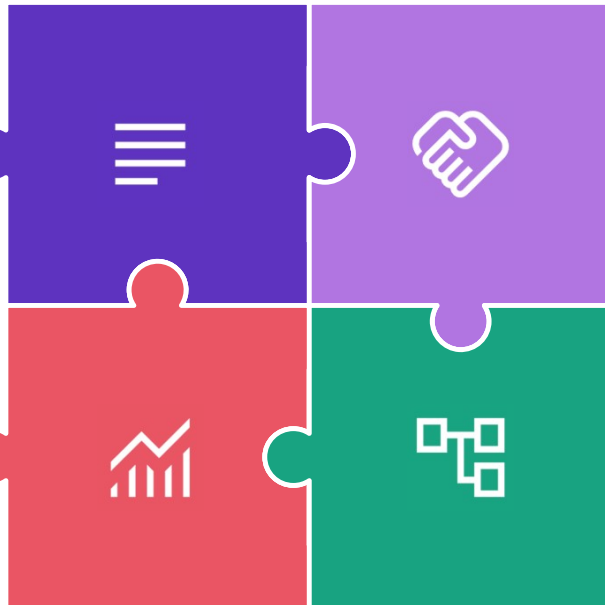
The Portfolio Integration Strategy

CONTENT

Trusted provider for superb, quality, and enriched Bibliographic content

ANALYTICS & INSIGHTS

Provide comprehensive analytics and insights that will help libraries measure and improve their impact



USER ENGAGEMENT

New innovative services to serve and connect with end-users

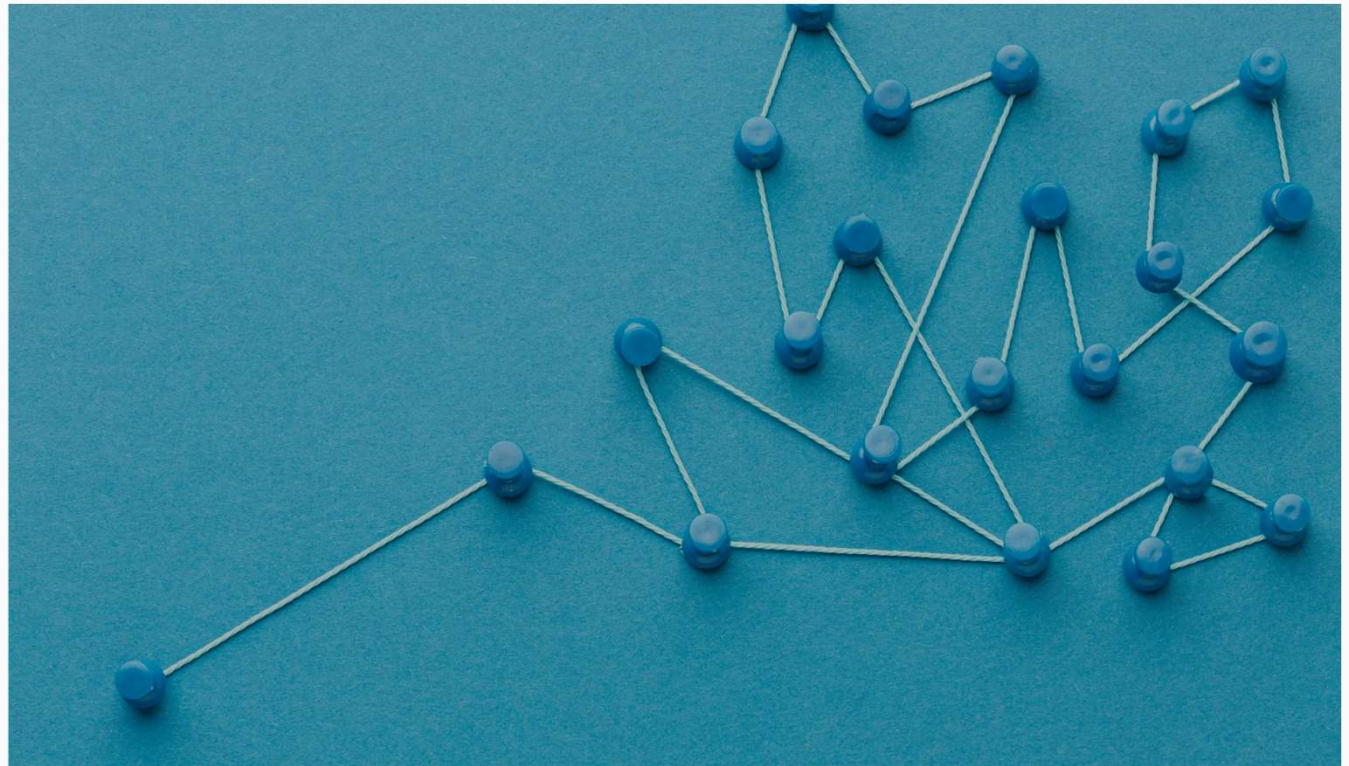
WORKFLOWS

Streamlined, automated workflows within Clarivate A&G ecosystem

Link Data Holistic Approach



End-to-end solution
from content,
through resource
management to
end user services



Library Analytics Expanding On All Fronts

Collect

From siloed analytics to a “Library Analytics”

Explore

Report. Share. Schedule.

Insight

Out-of-the-box insight dashboards

Action

From Insight to Action. DARA and more.

Scholarly Trusted AI Framework



AI model trained on
scholarly resources



Collaboration with the
community from
early stage



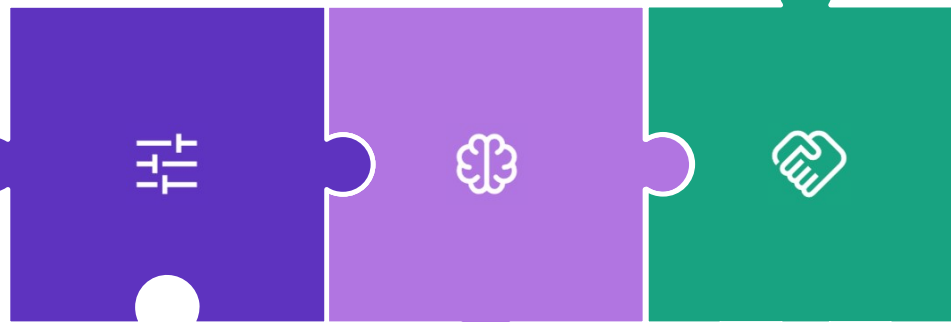
Pilot with a leading
AI Platform

AI21labs

New Ways to Collaborate with the Community

End-to-End Workflows

Focus on end-to-end workflows and cross-product use cases



Work Together

Collaboration and focus groups on product integrations and synergies

Innovative Services

Introduce new innovative services based on product synergy ideas

It's All about Connecting

- How can we simplify Alma and enhance staff experience together?
- How can libraries work to make the Collective Collection a reality?
- How can collaboration innovate library services and operations?
- How will connecting libraries reduce operational costs?
- How can technology help innovate and expand the library role in the organization?

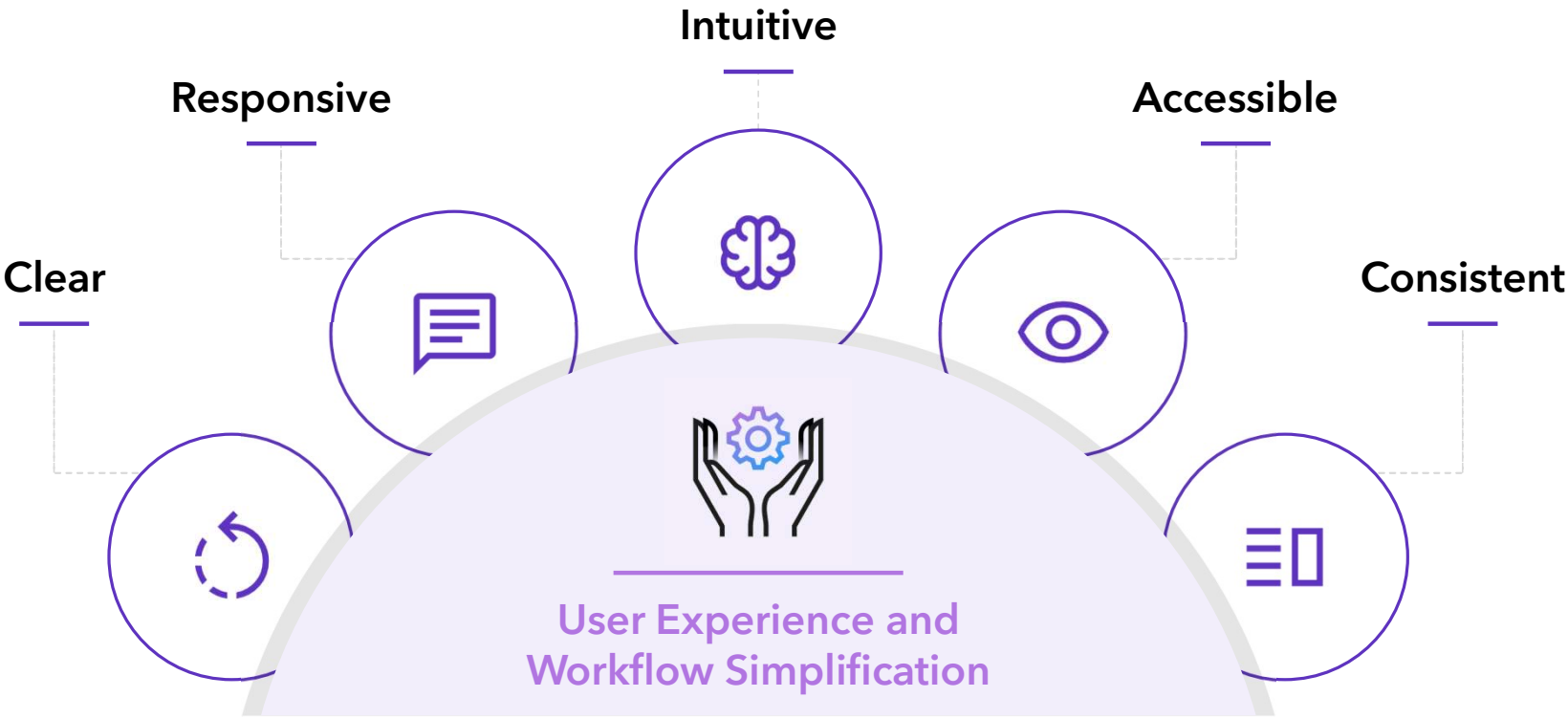


ExLibris[®]
Part of **Clarivate**

IGOLU
International Group of Ex Libris Users

Alma

Alma: Optimization



Alma: UX Projects 2023/2024



Resource Sharing
Task Lists



Acquisition - PO Lines



Repository Search



Patron Services



Sets

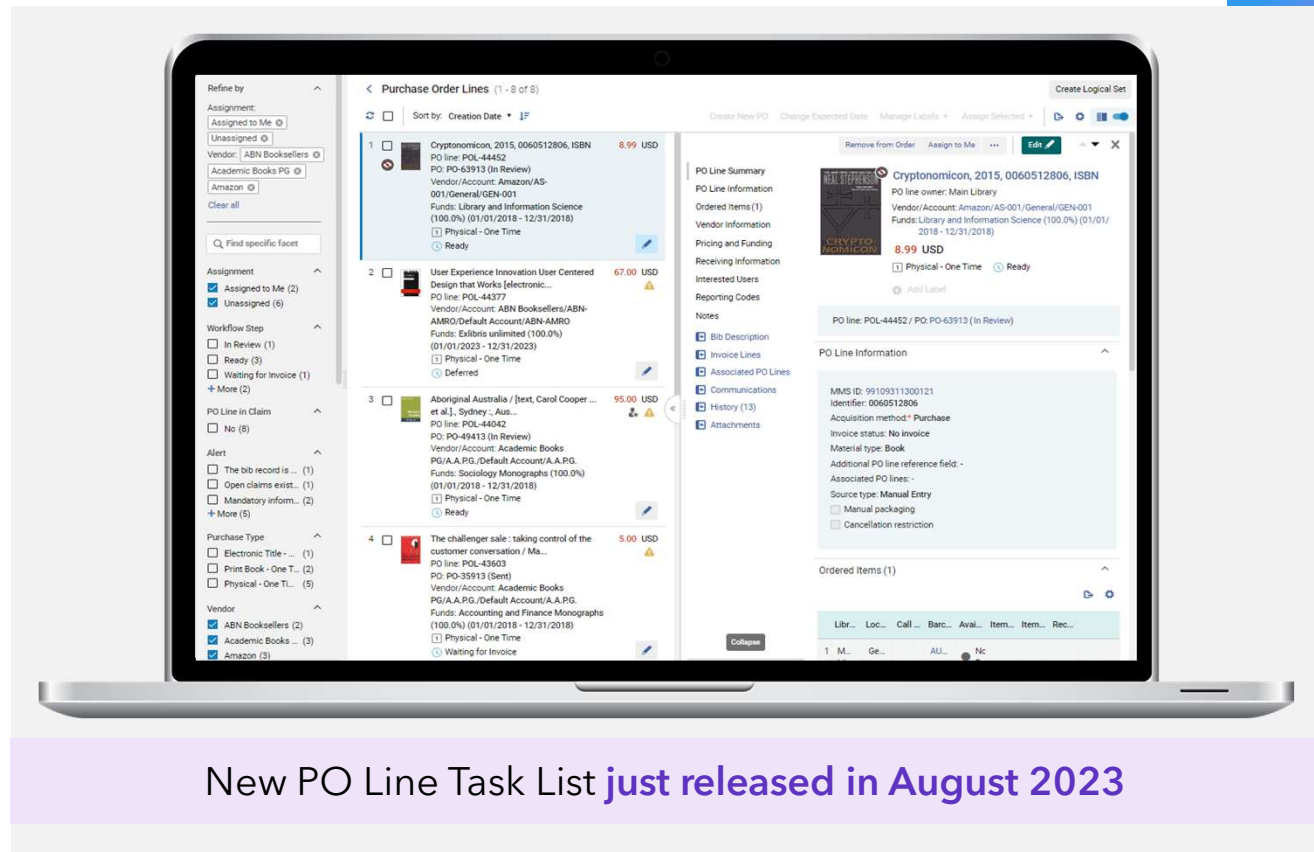


Analytics

Streamline End-to-End Workflows - Acquisitions

Highlights

- Details pane
- Multiple-facet selection
- Workflow Step and assignee information as facets
- Enhanced Advanced search interface
- Sliding panel
- Streamlined access to notes



New PO Line Task List just released in August 2023



Collection Development

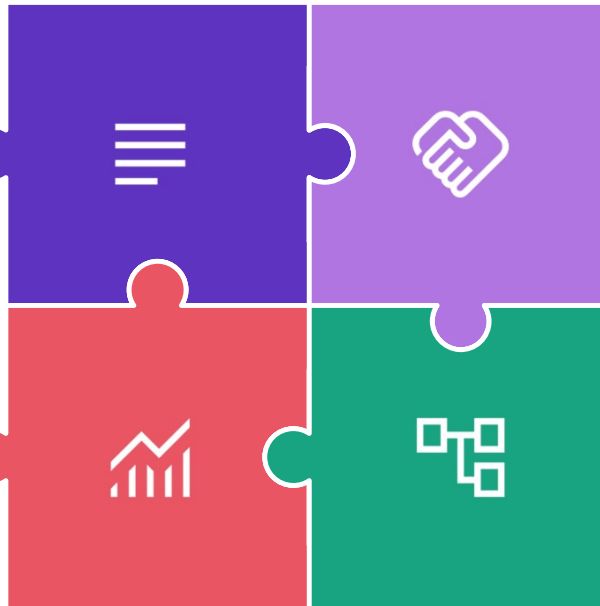
Collection Development

OPTIMIZE

Retention
Joint use and storage

ACTION

Preserve or digitize
Move to shared storage
Weeding
Purchase Electronic/Physical



CONNECT

Physical and Digital delivery
Digital fulfillment

ANALYZE

Usage
Coverage
Inventory
Overlap

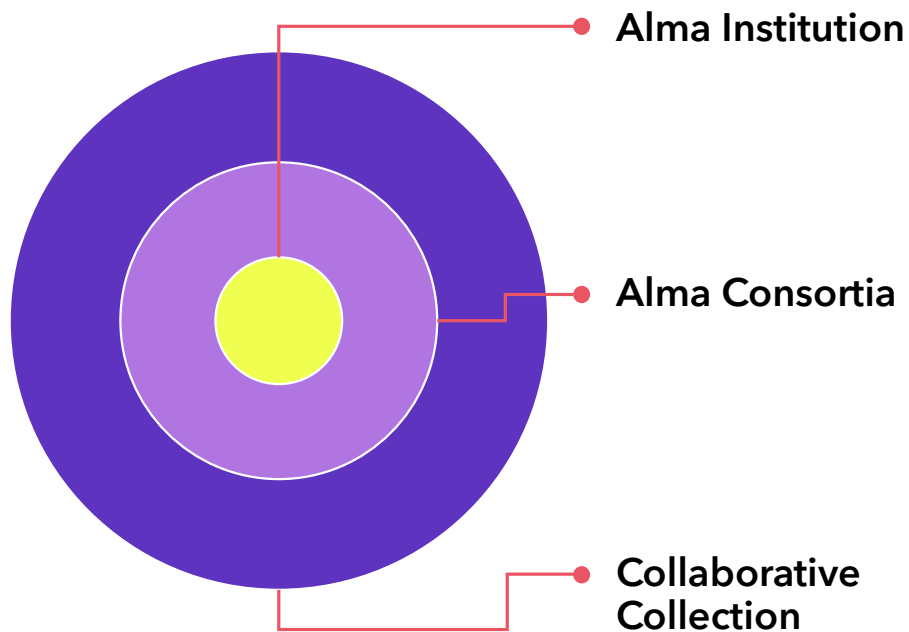
Collection Development

From separate tools to a proactive workflow that guides users towards their goals

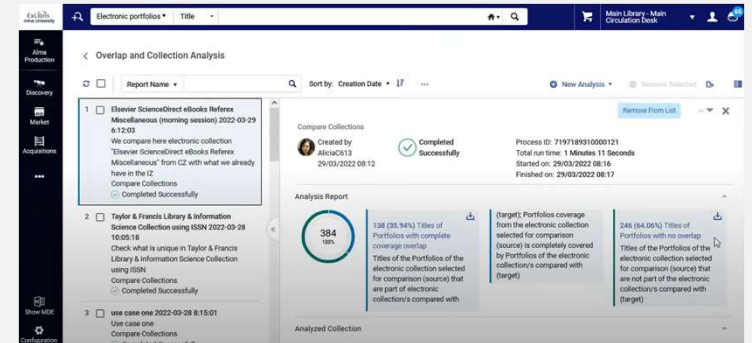
—
What are we
working on?

- Data-driven insight visualization dashboards (configuration based)
- Cross area standardization - comparing costs across all solutions
- Collection level benchmarking
- From insight to action: A powerful recommendation system triggered by data

Collection Development: Levels of Collaboration



Alma
overlap
analysis
tool



Shared
Print
initiatives

About Shared Print

Home » About Us » About Shared Print

EAST is a distributed model shared print program in which libraries commit to retain portions of their collections and share those titles with other members.

A collective collection, also known as a shared print program, involves primarily academic or research libraries collaborating to retain, develop, and provide access to their physical collections. Most collective collections include monographs and/or serials. Other efforts have addressed acquisition and/or retention of microform, federal government documents, and digital collections. https://en.wikipedia.org/wiki/Collective_collection

PARTNERSHIP FOR SHARED BOOK COLLECTIONS

ROSEMONT SHARED PRINT ALLIANCE

The Partnership for Shared Book Collections, focused on monographs, and the Rosemont Shared Print Alliance, focused on journals, are two federations of shared print programs in North America. They have partnered to create the following introductory materials describing Shared Print:

- ISB
- Slides
- Video

Infographic

Want to learn more about the inner workings of Shared Print Programs? The Shared Print Toolkit provides information on many facets, including collection analysis and disclosure of shared print retention commitments.

Learn more about the Value of EAST.

Collection Development Focus Group

43

Participants

18

Institutions

5

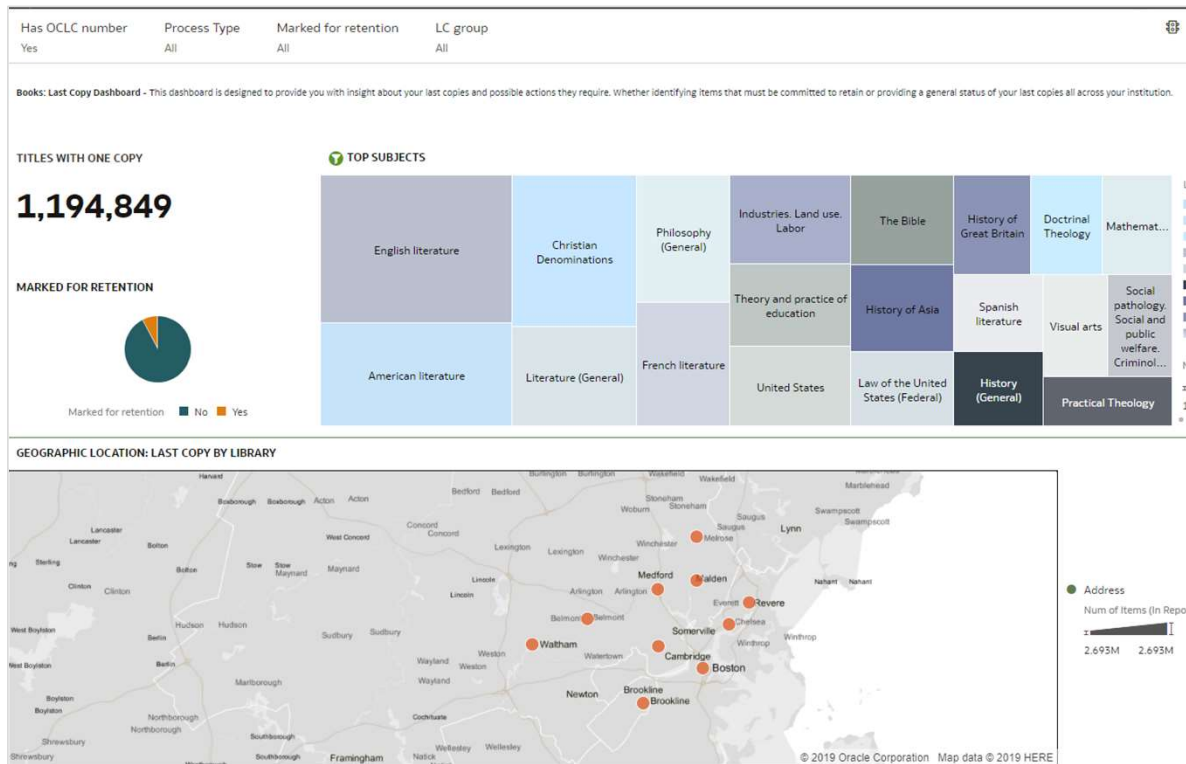
Consortiums

5

Single
Institutions

Books Last Copy Dashboard

First dashboard under review by focus group



*Subject to change



Resource Sharing

Resource Sharing Community



Rapido

Tell your friends!

Coming in 2024: Rapido available for different library systems



Connect

- Unlock **global** and **ex** collaboration
- Be part of an **open** ecosystem
- Integration with **ANY ILS**



relevance



Optimize

system handle the volume for you

- **Automated** interlibrary workflows

Rapido: Realizing the Collective Collection



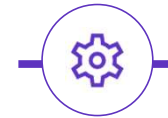
Simplified end-user workflows



Increase in request volume



One system



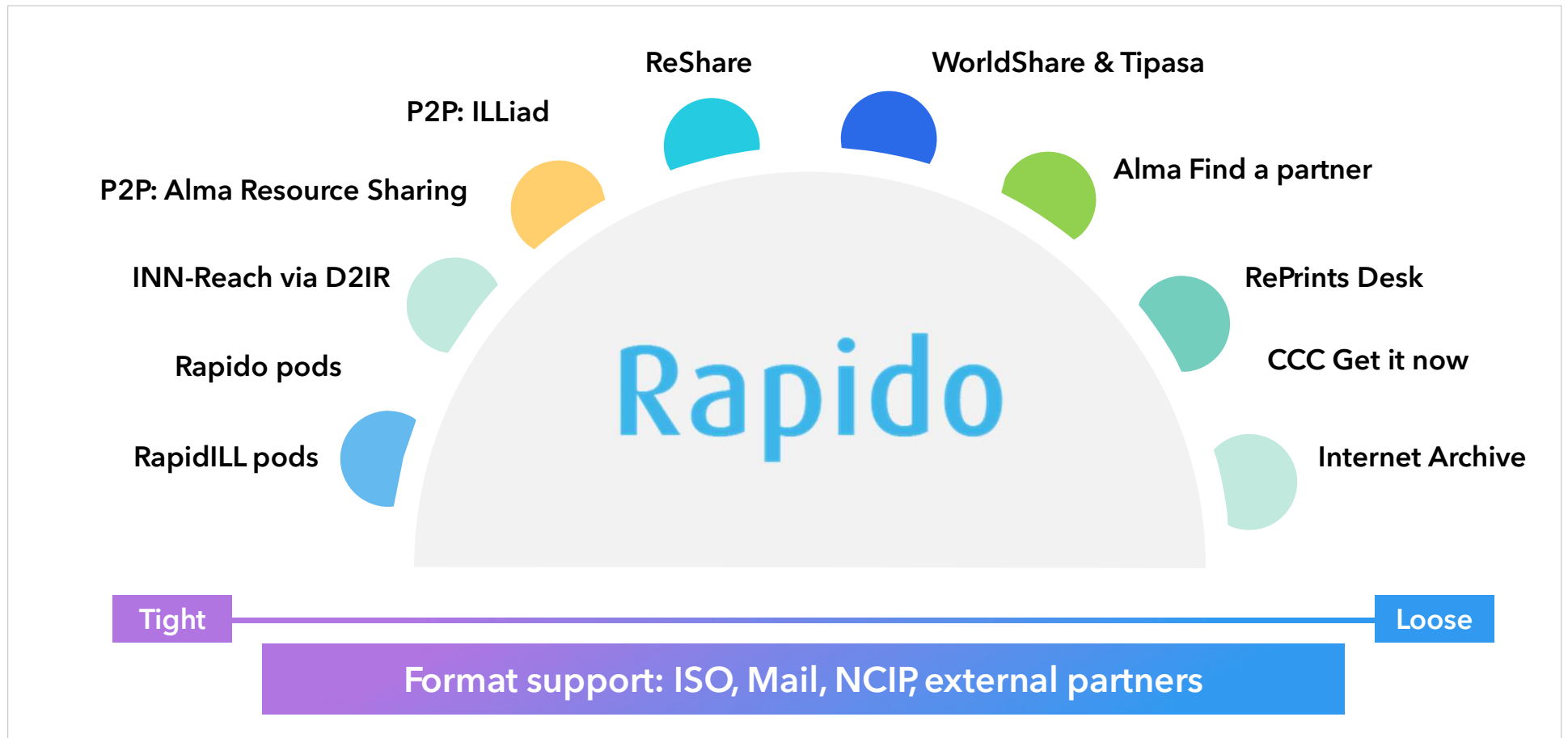
Highly automated and unmediated workflows



Optimizing digital delivery



Rapido: Flexible Ecosystem





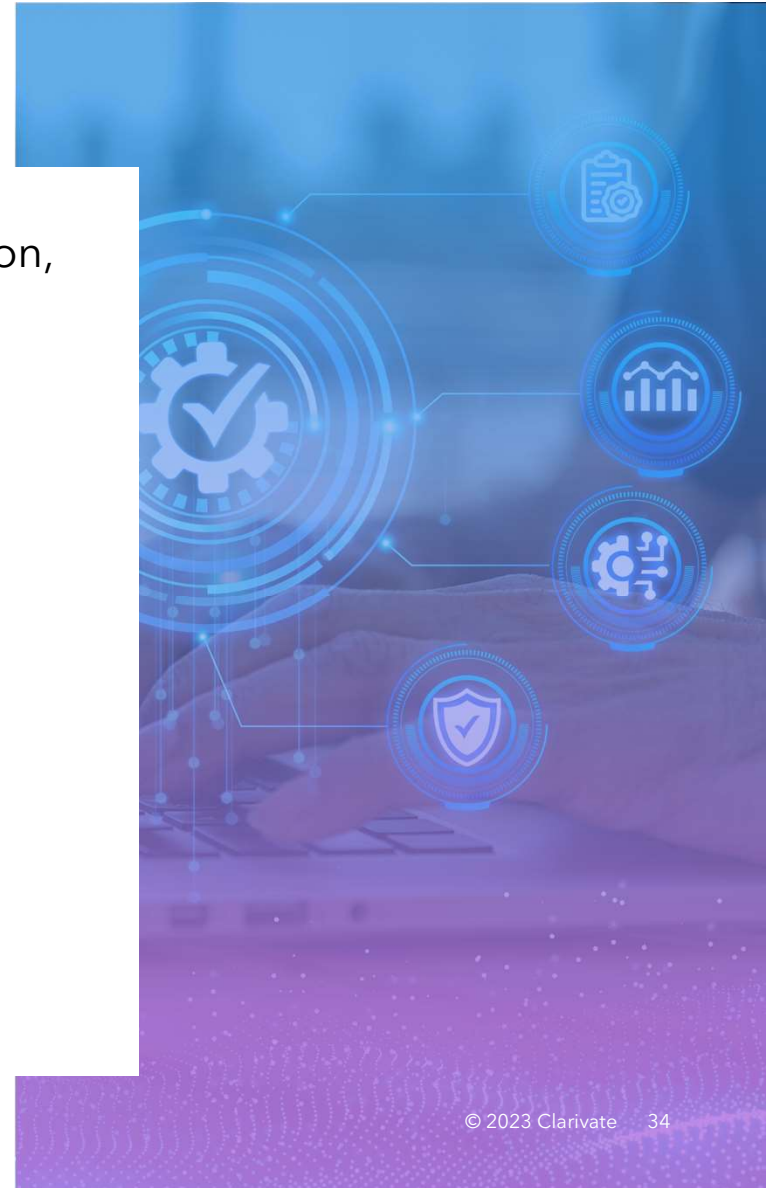
Digital Solutions

Digital Preservation on the Platform

- Digital asset management and digital preservation solution, managing the entire life-cycle of digital collections, guaranteeing perpetual access

- Hosted on secure and highly-available SaaS platform, Rosetta will support cloud and/or local storage solutions

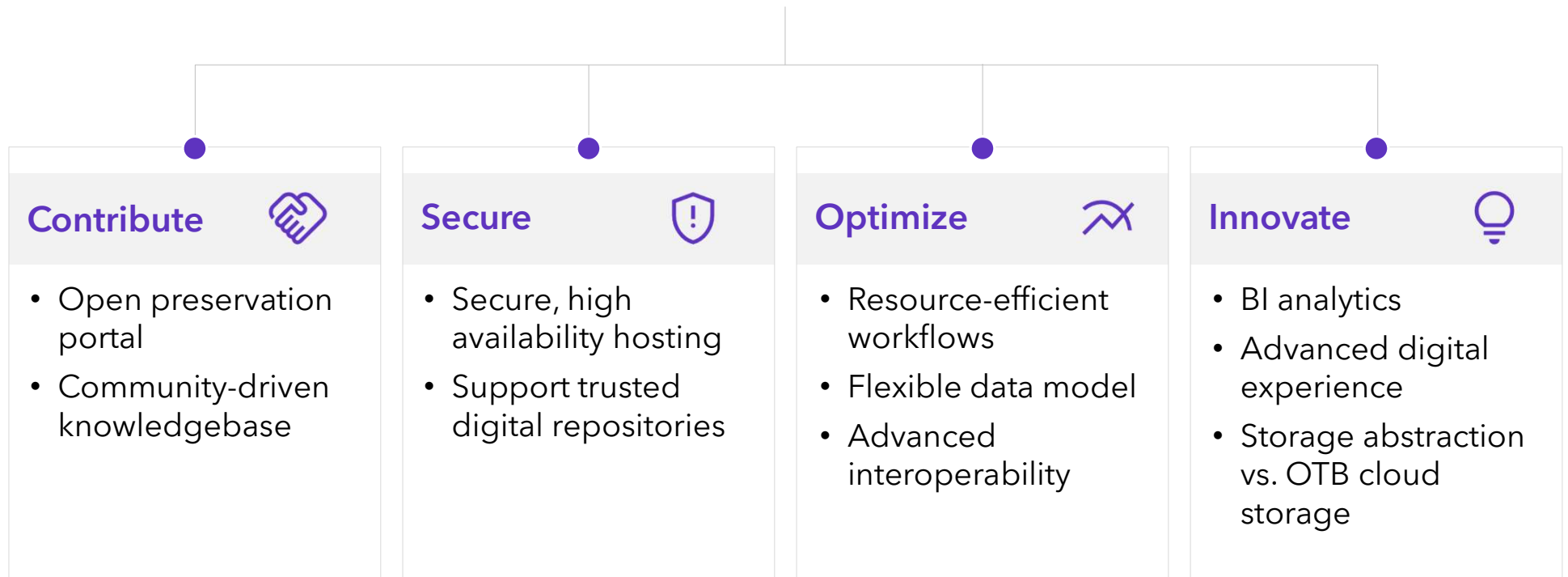
- Workflows based on community expertise



Rosetta on the Platform



Sustainable preservation platform



Rosetta: Adapting to Every Institution

Rosetta will answer the challenges of **customers of all sizes** and **segments**



ACADEMIA

- Academic libraries
- Research data



PUBLIC

- State and national libraries
- Archives



CONSORTIA

- Preservation as a Service
- Serving institutions with limited resources
- Cost effective model



Digital asset management (DAM)



DAM + cloud preservation



DAM + cloud + local preservation (hybrid)



Linked Data

Benefits of Linked Open Data



**Efficient
Cataloging**

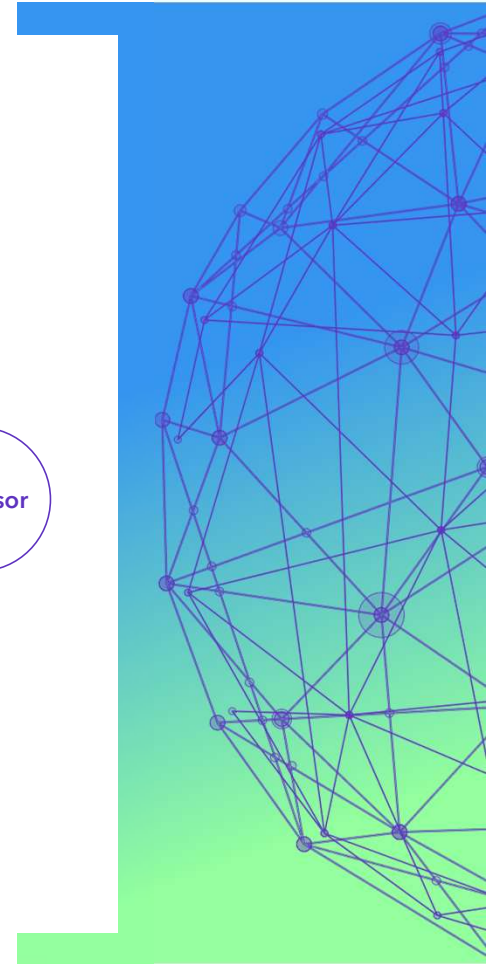
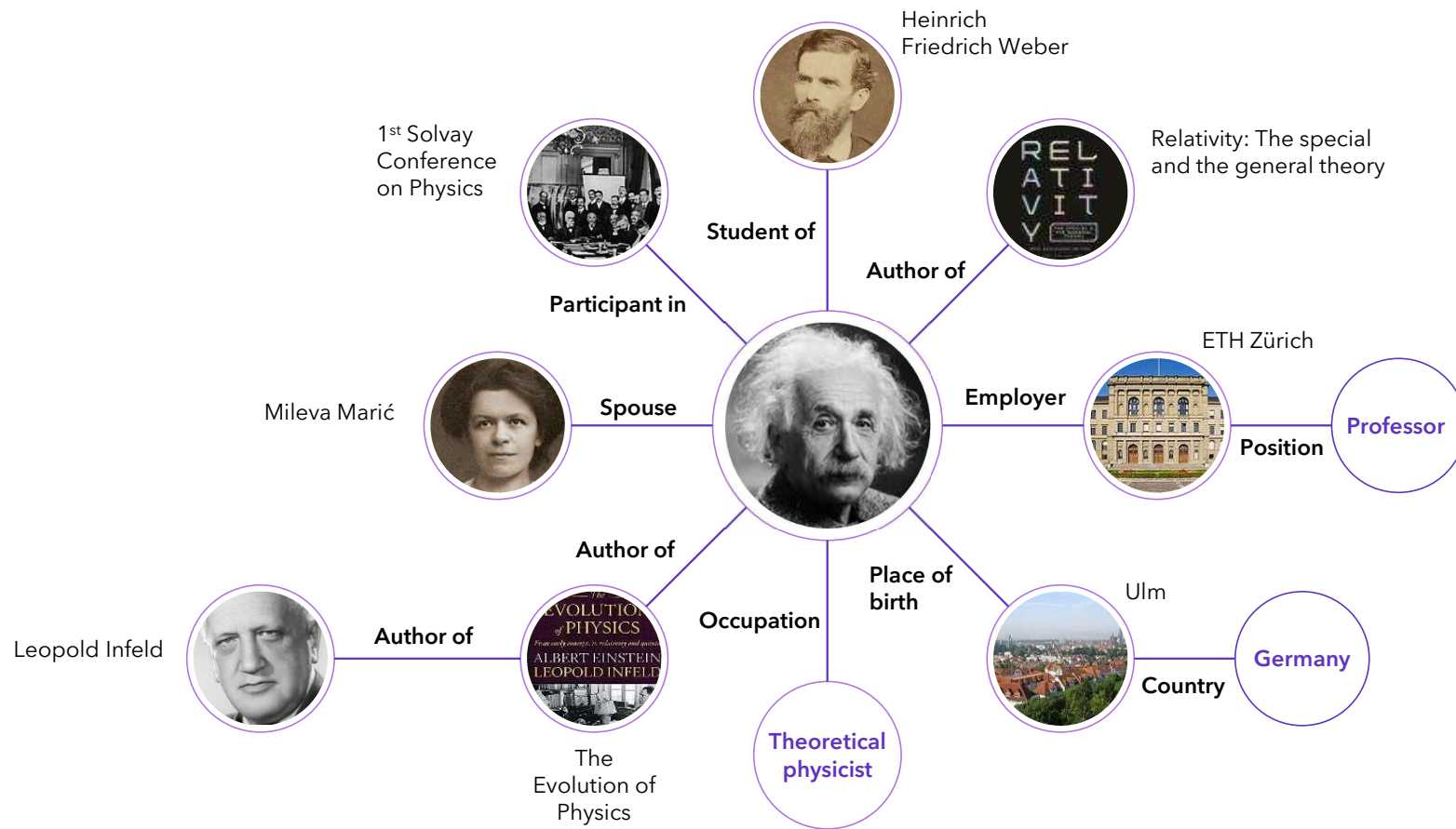


**Better
Discoverability**

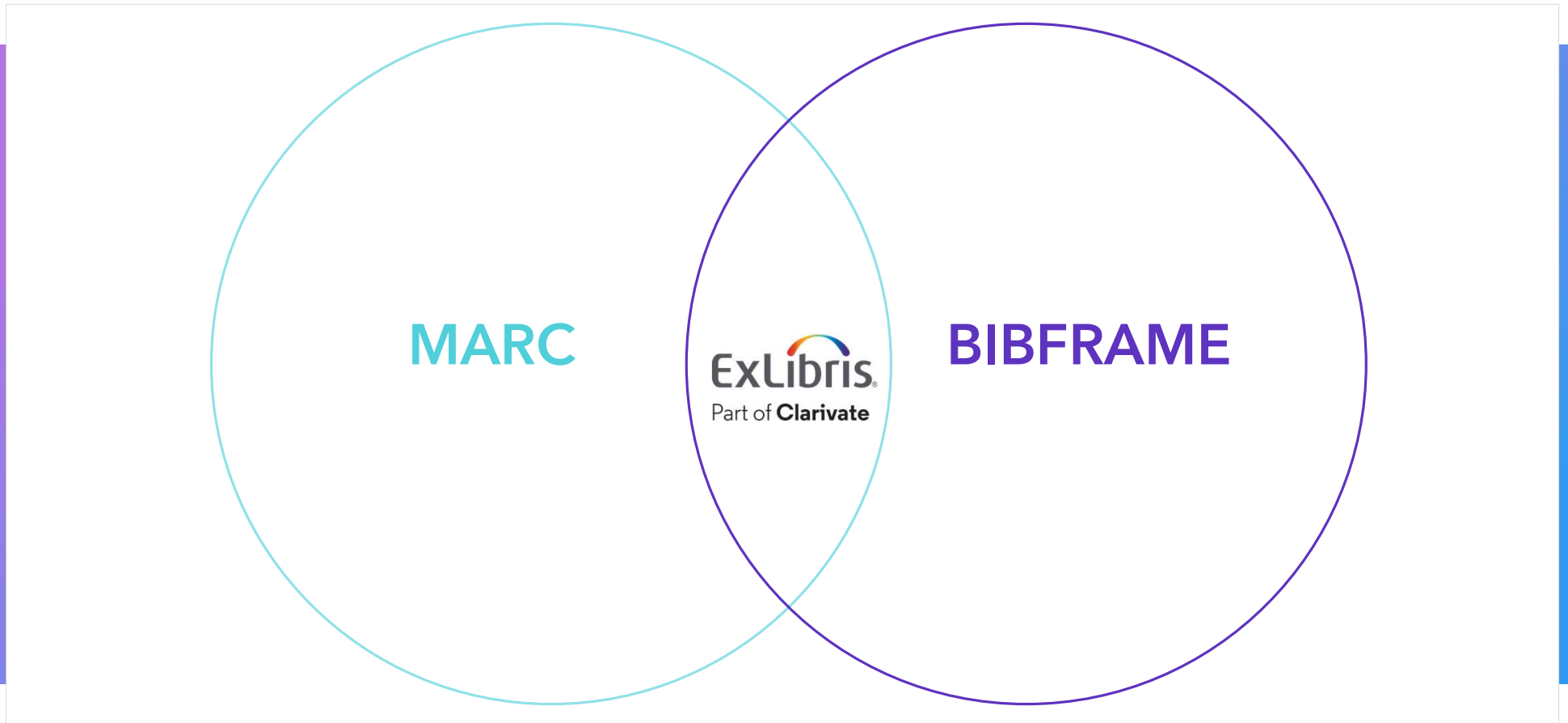


**Global
Interoperability**

Connecting Entities for a Richer Discovery Experience

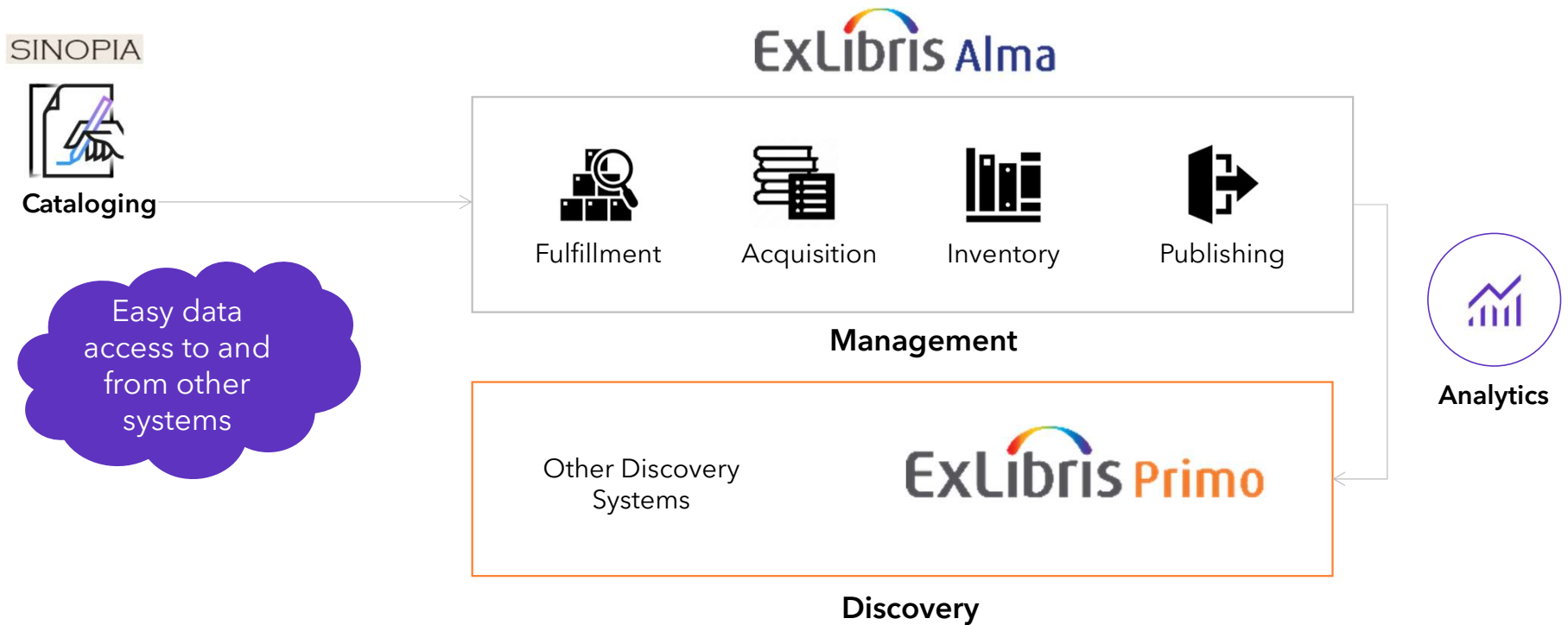


Moving to Full Support of Linked Open Data



Full End-to-End Workflow

Production use ready by Q2 2024



Ex Libris Linked Open Data Focus Group



Northwestern
University

UCDAVIS



Princeton

Harvard

Working with the community, for the community



Looking Ahead: 2024 to 2025

Looking Ahead: 2024 to 2025

You will be able to:

- Analyze collections, collectively and easily, within Alma and beyond
- Share resources in an ever-expanding network of libraries, no matter the ILS
- Describe resources using BIBFRAME, side by side with MARC records
- Preserve digital heritage and resources, together

All the while continually increasing productivity and simplifying workflows for staff users and for libraries of all sizes and types

Looking Ahead: 2024 to 2025

Some homework... Ask yourselves

- What's the first collection you want to start analyzing?
.....
- Do you know which digital resources are at risk?
.....
- What special collection will you describe using BIBFRAME?
.....
- What is your current fill rate and time to deliver digital documents?



Want to Hear More?

Suggested Sessions to Hear More Details

Rosetta on the Platform: Next-gen Digital Preservation	Daniel Greenberg	Monday, 2:40 PM-3:10 PM	Room Emma Vorlat (00.E20)
Alma Digital Product Update	Daniel Greenberg	Monday, 4:20 PM-4:50 PM	Room Emma Vorlat (00.E20)
Alma Product Update	Dana Moshkovits	Monday, 5:00 PM-5:30 PM	Room AV 04.17
Consortia Management and Administration of Alma	Erez Shabo	Tuesday, 3:30 PM-4:00 PM	Room AV 01.12
Linked Data Library Ecosystem powered by AI	Itai Veltzman Yisrael Kuchar	Tuesday, 4:10 PM-4:40 PM	Room AV 00.17
Rapido Product Update	Judith Fraenkel	Tuesday, 4:50 PM-5:20 PM	Room AV 04.17
Turning Data into Insight	Raphael Gabbay	Tuesday, 4:50 PM-5:20 PM	Room AV 91.12
In Depth: Accessibility	Serena H. Rosenhan Uri Beladev	Wednesday 10:20 AM-10:50 AM	Room AV 91.12
Personalisation and Efficiency	Lili Daie	Wednesday, 12:00 PM-12:30 PM	Room AV 01.12

ExLibris
Part of **Clarivate**

IGOLU
International Group of Ex Libris Users

Thank You!

Asaf.Kline@clarivate.com

About Clarivate

Clarivate is the leading global information services provider. We connect people and organizations to intelligence they can trust to transform their perspective, their work and our world. Our subscription and technology-based solutions are coupled with deep domain expertise and cover the areas of Academia & Government, Life Sciences & Healthcare and Intellectual Property. For more information, please visit [clarivate.com](https://www.clarivate.com)

© 2023 Clarivate

Clarivate and its logo, as well as all other trademarks used herein are trademarks of their respective owners and used under license.