

KU Leuven Libraries

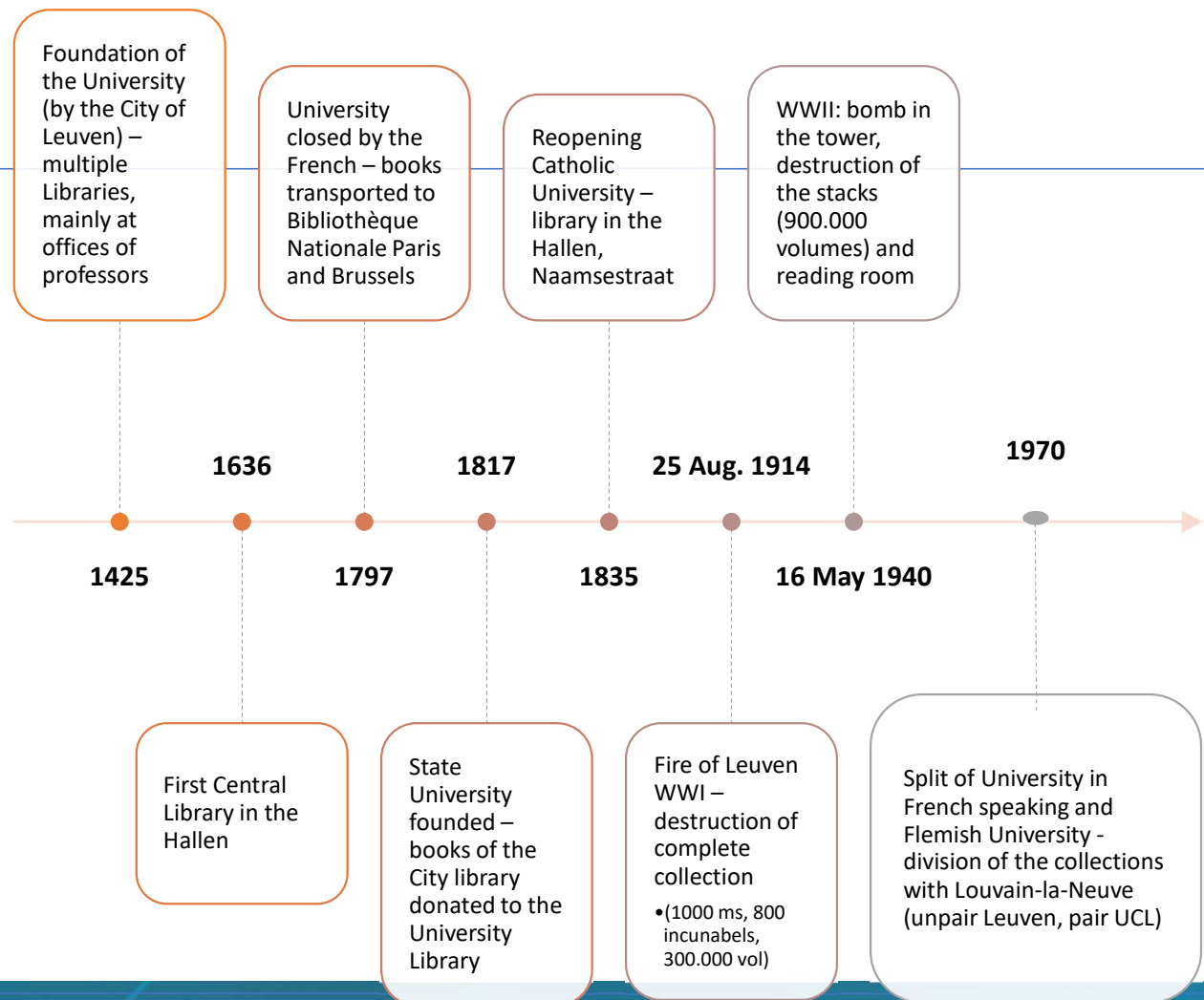
New approach to Strategic Planning and Innovation

Hilde Van Kiel

Content

- History of KU Leuven Libraries
- KU Leuven Libraries today
- Innovation:
 - LIBIS
 - Ideekix
 - Innovation network
- Strategic Plan 2022 – 2025
 - 6 Pillars
- Different approach to stimulate Involvement and Innovation

A Library History with hickups





- Library at the Hallen, Naamsestraat until WWI

WWI : August 25th 1914



destruction of complete collection:

- 1000 manuscripts
- 800 incunabels
- 300.000 volumes



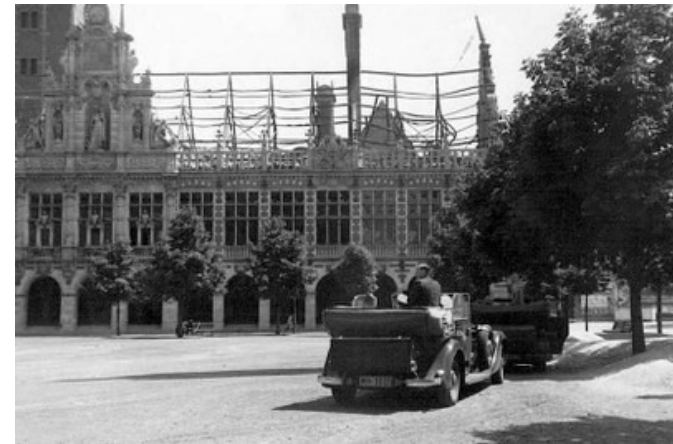
After WWI

- Immediate reaction worldwide, started in Antwerp, France, Manchester and then to the US.
- Colleges & Universities that donated => inscriptions in the Building
- Hoover (president) and Hoover Foundation aided to raise budget
- Whitney Warren, architect
- Building opened 1928
- Leuven University Library is part of The 'Treaty of Versailles'

WWII: May 16th 1940



bomb in the tower
destruction of the stacks (900.000
volumes) and reading room



May 1968 – 1971

creation of a French speaking university in Louvain-la-Neuve



division of the Library collections
between the two universities



KU Leuven Libraries today

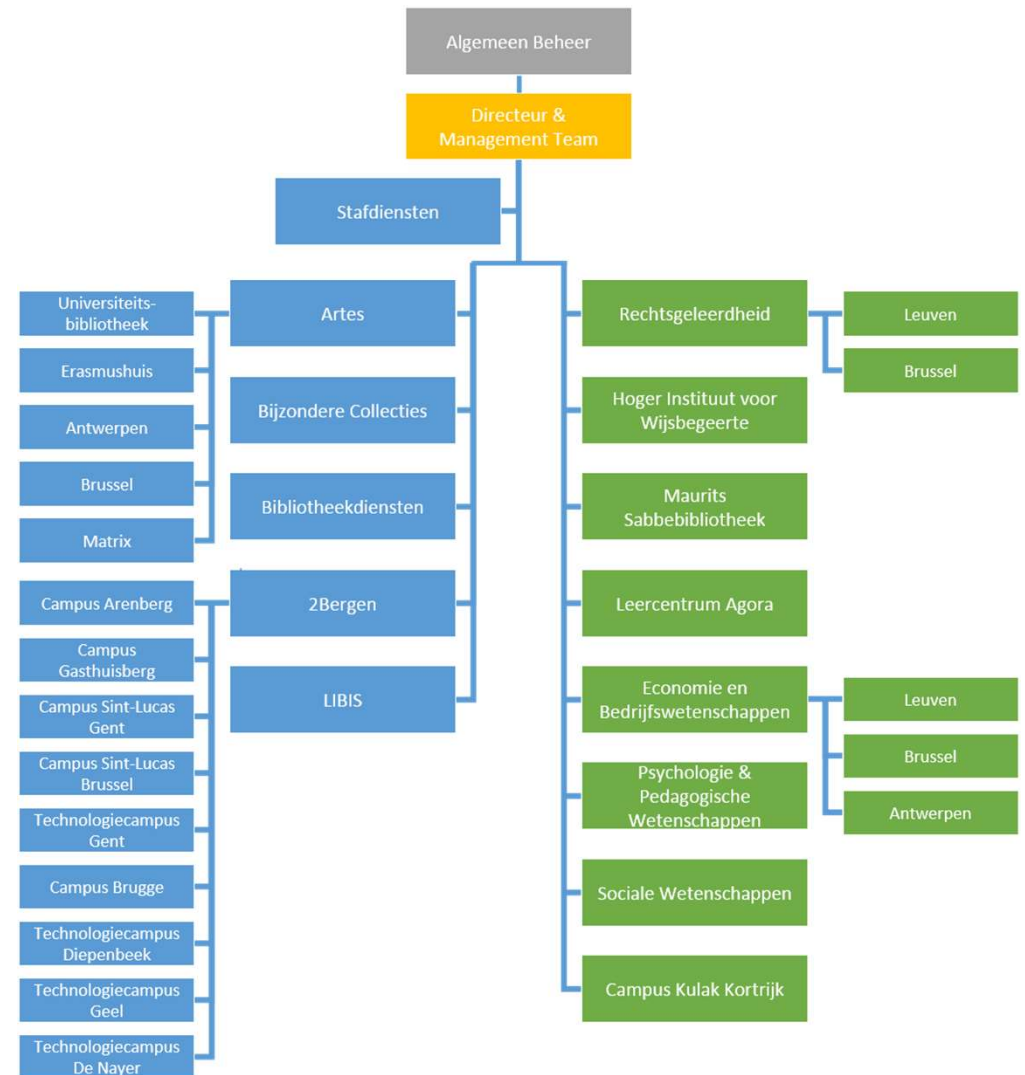


KU Leuven Libraries

- 24 22 locations
 - 12 in Leuven,
 - 12 10 elsewhere in Flanders:
 - Brugge, Gent (2), Antwerpen, Brussel (2), Kortrijk, Geel, Diepenbeek, Mechelen
- mixed governance, 1 strategic plan

Directly under director

Faculty staff and budget



KU Leuven Libraries - organisation

- Mixed governance central and faculty but joined by 1 strategic plan.
 - Plan runs for 4 year, approved by Executive Board and Academic Council of KU Leuven.
- Mixture of physical libraries, learning centres and services (Library services, LIBIS).
- Unique preciosa in Maurits Sabbe Library and Special collections.
- Largest electronic collection in Belgium.
- Transfer to electronic: > 98% Biomed, > 90% Science & Techn (expection. Architecture), 85-90% Economics en Psychology, > 60% Arts, Soc. Sciences, Pedagogy. Main focus still on paper: Theology and Philosophy
- Pressure on physical collection in inner city Leuven => Loods Heverlee

Fact and figures (for all libraries)

- around 4.850.000 items in our catalogue
 - 3,5 million physical collection
 - 1.350.000 electronic collection
- 9.400.000 full text downloads on our e-collection
- 5.000 seats in our libraries (on a total of 60.000 students)
- >184 FTE staff
- Budget:
 - 11.000.000 € collection budget
 - 1.1 million paper collection
 - 9,9 million e-collection
 - Payroll: 13.952.000 €
 - Operational budget: 2.734.550 €

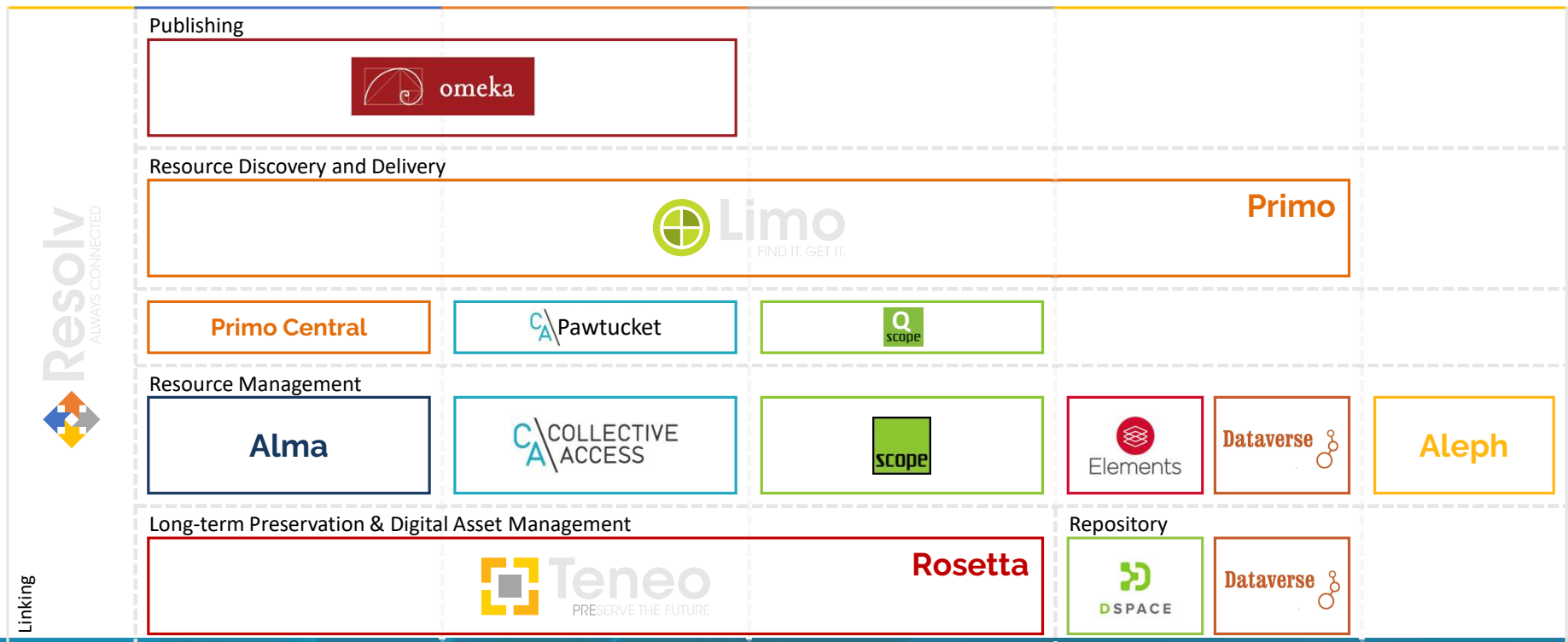
How did we take up on innovation within our (complex) organisation previously?

- LIBIS
- IDEEKIX
- Innovation network
- Imaging Lab (digitisation)

About LIBIS

- Part of KU Leuven Libraries and Leuven R&D
- 27 highly skilled persons offering services since 1973
- Digital service provider managing KU Leuven wide solutions
 - Library catalogue, archival management, heritage collections
 - Institutional research data repository
 - Current research information system
 - Digital preservation platform
 - ... *these solutions are also offered to external organisations.*
- Working with researchers in the design and development of scalable and sustainable RI

Architecture



LIBIS

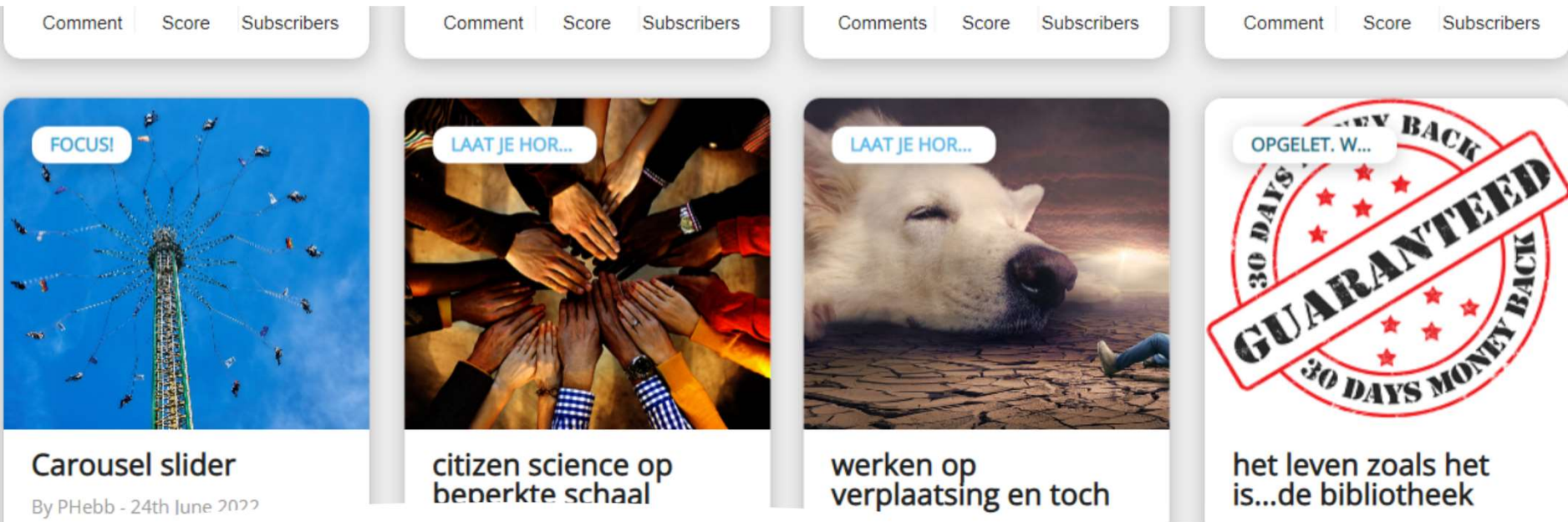
- LIBIS : development partner for Primo.
- LIBIS : development partner of Ex Libris for Alma. Since summer 2014, LIBISnet – the largest scientific library network in Belgium – is live with Alma.
- LIBIS : development partner for Leganto.
- But LIBIS has also been actively involved in the research and development of innovative environments where researchers can manage their scientific datasets and query them appropriately, collaborate with fellow researchers, and share the results with different environments. [Research infrastructure · LIBIS · Libis](#)

RDR



Libraries & Data

- [KU Leuven RDR - RDR - Research Data Repository](#)
 - RDR (pronounced "Radar") is **KU Leuven's institutional research data repository for the publication of research data**. A Dataverse.org based platform to upload, describe, and share your research data to make your data more FAIR.
 - ***Make your data citeable:*** A published dataset in KU Leuven RDR gets its own DOI, is registered in Lirias, and appears on your who-is-who publication list.
- => developed by LIBIS



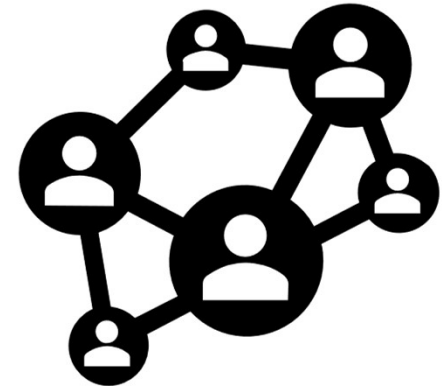
IDEEKIX

- [KU Leuven Bibliotheken Ideeënplatform - Powered by HunchBuzz](#)
- A platform for ideas from all our library staff
- Ideas mainly about working environment and working with our collections. Furthermore proposals on acquisition, working with podcast in LIMO
- BUT: it remains too much in the margin, engaging staff to bring in their ideas is still difficult.

Innovation network

Within the previous strategic plan: a group of people with a mission:

- trying to encourage innovation within the organisation => IDEEKIX as one example
- Making sure they as a group were experts on how to stimulate innovative ideas
- Making sure they as a group knew innovative techniques that can be implemented in the organisation



Digitisation

- Top notch lab digitizing our most precious collections (IIF)
- But also: developing together with engineers from ESAT the dome and portable dome.
 - [Imaging Lab - KU Leuven Libraries](#)



Conclusion of previous strategic plan

- We are still searching on how to imbed innovation more deeply into our organization.
- Some of our services like LIBIS and Digitization are already doing very well on the innovative side but the rest of the organization can do with a next step.

...ander seghc. Do wurde in den verliche vanden
...Bacharian die hach... als onzboer
...der van sine
...der worm en
...der hyn

Die vrone victonice
Karl martel. in hto
tage

S. Martel
Martel



Hier be
dat. n. edel.
thre: der coninge
tje: Op pipin die
birtoge: in hste
van dien riken
ragnarde. xxx. jaren



Strategic Plan 2022-2025 : 6 focus lines

Open Science:

KU Leuven Libraries as a central point in the support for OS for researchers and students. Focus on RDM, Scholarly Communication and Open Educational Resources. Finding out what our position is towards Citizen Science.

RDR and OER Repository

Heritage Collections:

Make them findable worldwide, engage researchers to work with the collections and work with heritage organisations within the university, the city of Leuven, Flanders and Worldwide

Third Space:

Our locations become the Third Space for students (and researchers) between the formal places where they are taught and the informal ones at home or student dorm



Strategic Plan 2022-2025 : 6 focus lines

Collections:

Focus on preservation of OA collections and digital born as well as enlarging our support for OA.

Focus on the preservation of physical collections: needed, locations?

Digital Perspectives:

Transforming more of our services to digital

Making collections available digital worldwide

Providing linked data to be findable

Internal Organisation:

Quality driven

Staff development

Internal organisation

Inclusive and safe working environment



A new approach: Get Involved!

NEW:

- More MT members/ strategic line => one plan!
- Include basic processes in MT working:
 - Backoffice / Front office / IT / Research / Education / Campuses
- Bottom up approach to realization of strategic lines. Management team decides on the major lines but teams propose the underpinning actions they think can help us moving forward on the 6 focus lines.

Focus of the teams

- Open Science
 - Getting our services in the open, making RDR and our data support visible to researchers
 - OER + OER Repository
 - Hackaton (see digital perspectives)
 - RDM support : building expertise
- Collections
 - Digitisation contemporary collections => digital perspectives
 - Sustainability of OA collections
 - Focus on digitization with double purpose: gaining space + getting our data in the open and available for researchers

Focus of the teams

- Heritage collections
 - Google Books
 - Data of our books worldwide available and findable
 - Researchers working with and on our collections
- Third Space
 - New buildings: Antwerp, Ghent and Brussels
 - Being the formal and informal space for our users
- Internal operations
 - Quality of our services
 - Education of our staff

Digital perspectives

- Google Books
- Virtual tours
- A database for a very special collection: our material database for the architects
- Proces for digitisation of contemporary materials => see next slides
- Hackaton => next slide
- DAM system by LIBIS: integration of collection mgt systems with Rosetta and resolver
- Library app
- Virtual reading room

Hackaton

- <https://bib.kuleuven.be/onderzoek/digital-humanities/bibliotech-2023-hackathon>
- 10 days event that united KU Leuven researchers, students, and staff.
- small groups worked specifically on one of the datasets prepared (by [LIBIS](#)) for the hackathon.
- The teams were free to follow their creative inspiration, but they had to apply some digital approaches or tools to the dataset to produce an end result that was presented in the form of a short presentation and a poster at the closing event of the hackathon.
- The event itself showed groups of really enthusiastic student, staff and researchers. It gave energy to everybody by seeing how much could be reached on a short amount of time **and** with the libraries data.

Digitisation Modern (local) periodicals

Benefits:

- Findable, searchable => researchers & students
- Space saving within the library stacks => more study and group work places => more 3th space

How:

- New workflows
- Scanning by local staff
- Second lab for this material

Anjou Bible

