



# Library Mobile: 1 Institute, 5 Libraries, 6 Profiles

**Ido Aharon**

**Tel-Aviv University**



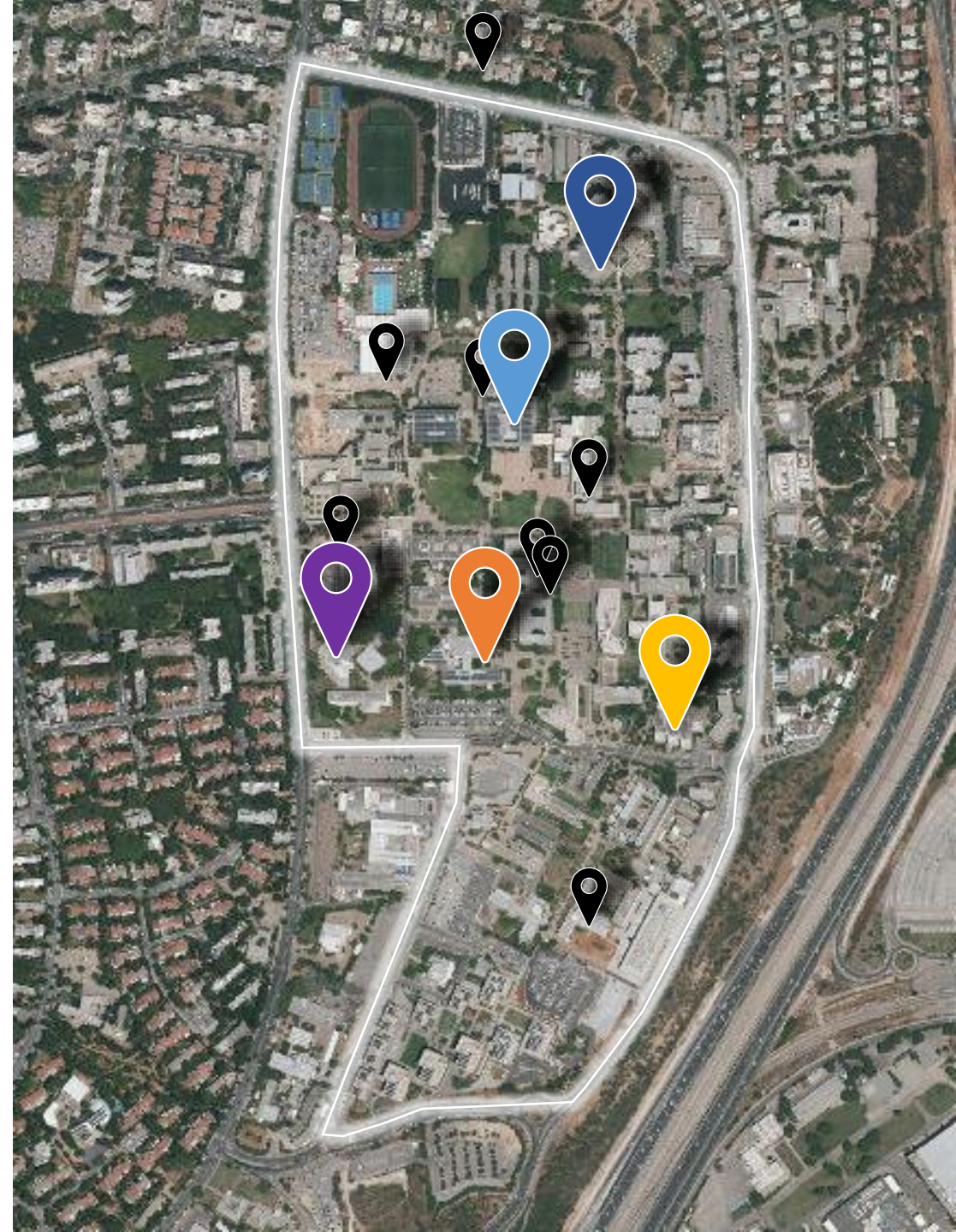
# TAU University

1 Institution

5 libraries

**10 Faculties/Schools**

Arts & Humanities, Life Science & Medicine,  
Exact Science & Engineering, Law  
Social Science, Management & Education



# Work Process

## Acquisition



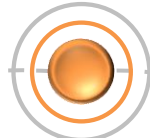
purchasing *Library Mobile*,  
first assimilation in  
Hebrew

Back Office

## Training



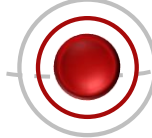
## App Building



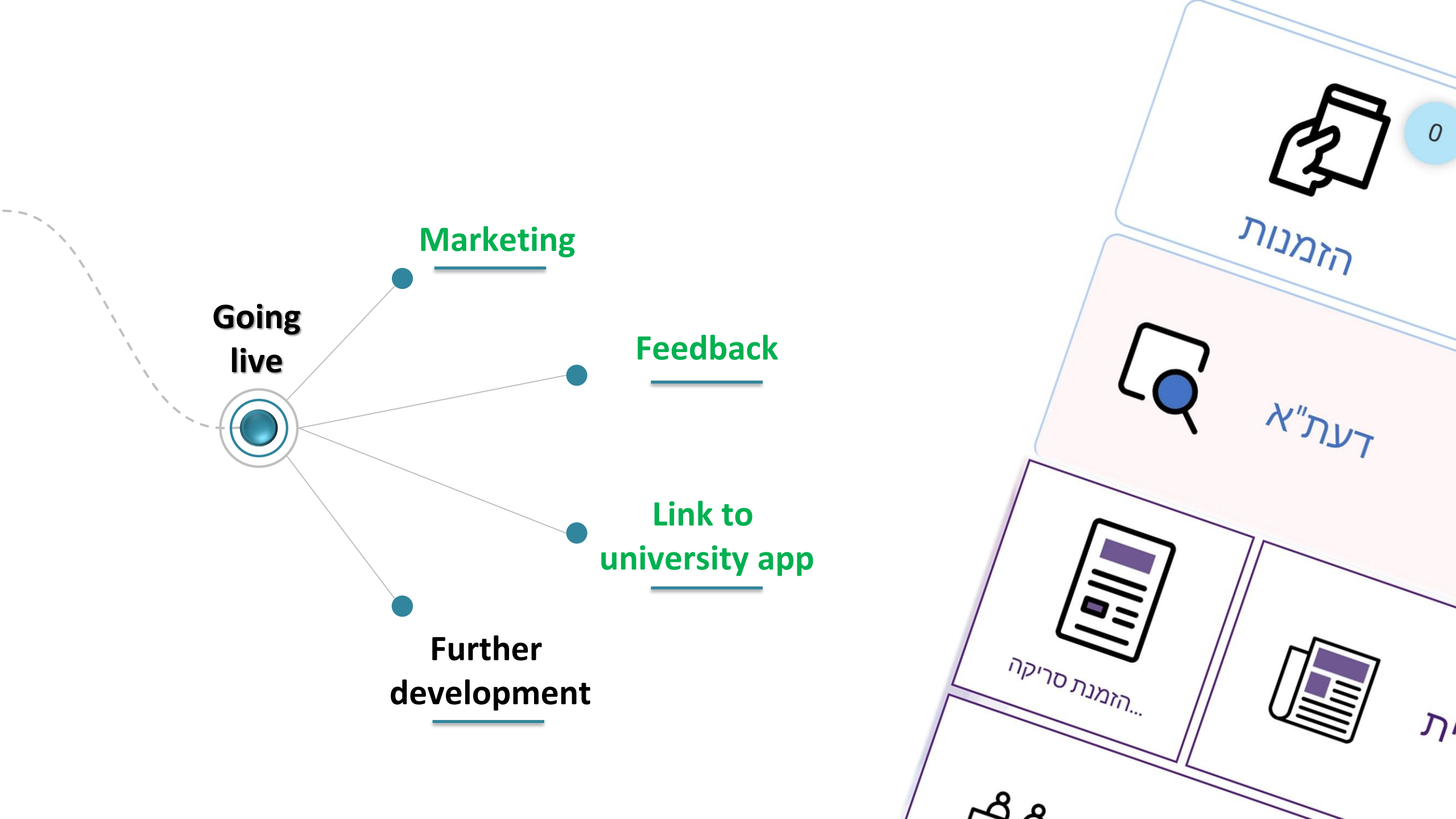
Design & development  
of app components

Marketing, soft  
launch for volunteers

## Launch

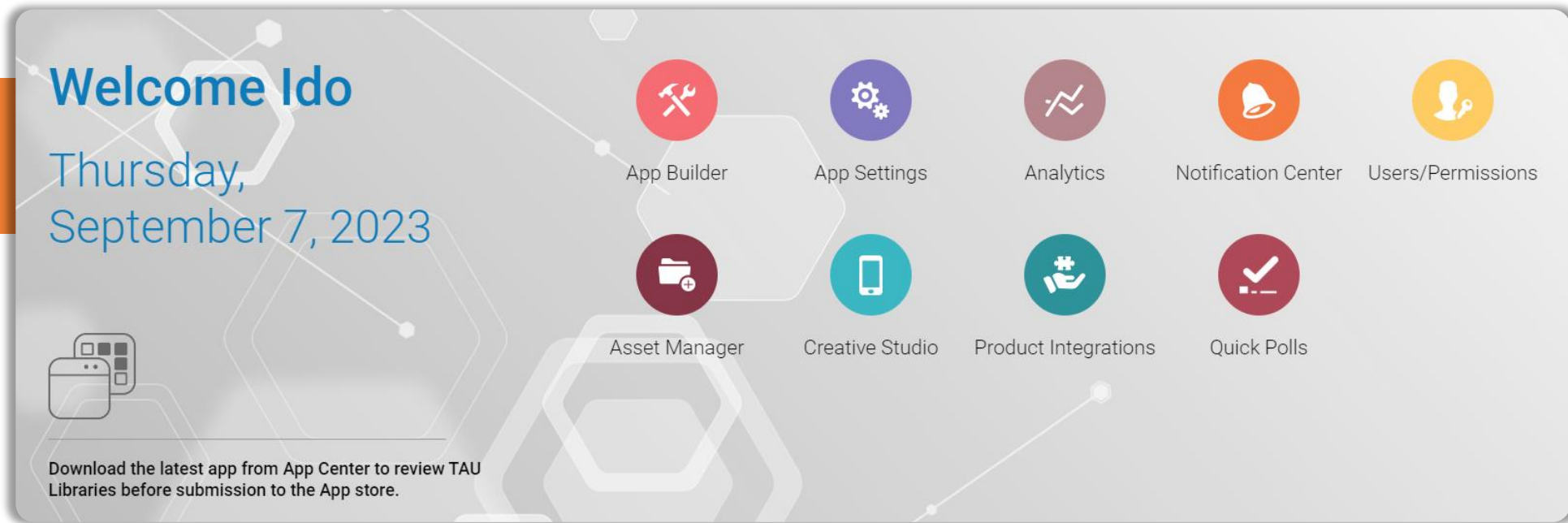






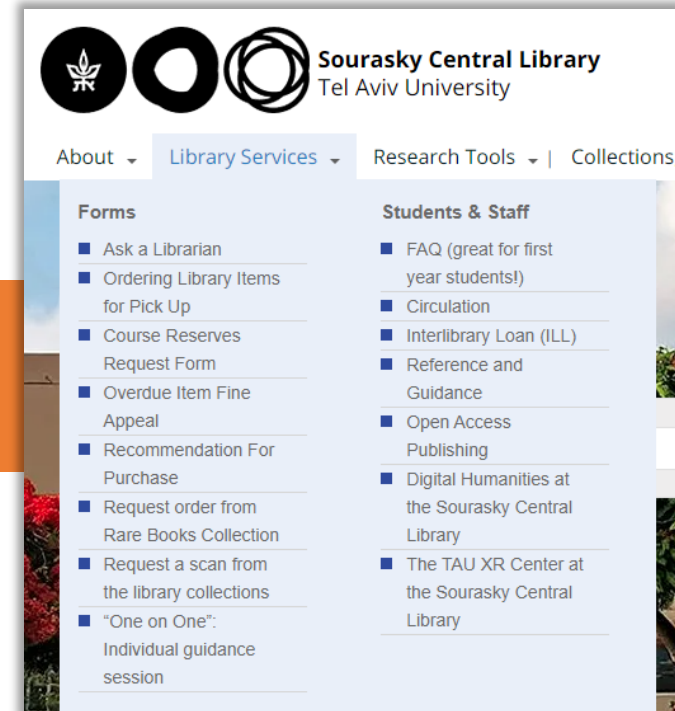
# Back Office Interface

- App Building
- Analytics
- Notification center
- Settings
- Creative Studio
- User permissions



# App Builder

- **Web site most common usage**
  - **Study stations reservation**
  - **Loans & requests**
  - **Primo search**
  - **Opening hours**



# App Builder

The screenshot displays the App Builder interface for a mobile application. On the left, a preview of the app is shown on a Samsung Galaxy S10 device. The app's header includes the TAU Libraries logo and a search icon. Below the header is a banner image with the text "הספרייה המרכזית ע"ש סוראסקי" and "ברוכים הבאים". The main content area features a "השאלות והזמנות" (Loans and Reservations) section with a book icon, and a "דעת" (Reviews) section with a speech bubble icon. At the bottom, there are buttons for "WhatsApp" and "הזמנת חדר לימוד" (Reserve a study room).

On the right, the configuration panel is visible, with the "App Config" section highlighted. The configuration options include:

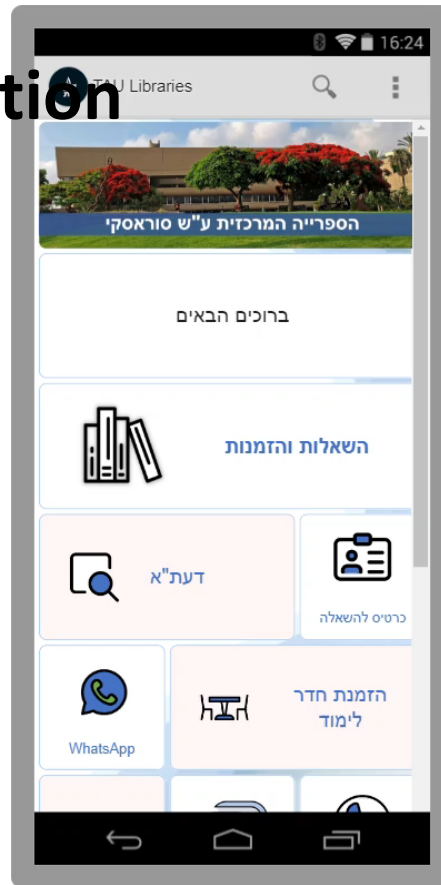
- App Config** (code)
  - Portal Style: With Side Navigation
  - Header Background Color (web): #ffffff
  - Header Image (web): <https://portal.ombiel.co.uk/assets/ExLibrisLibrary/TAU/icons> (Browse)
  - Columns (min): 3
- Tile Style** (code)
  - Background Color: rgb(255,255,255,0.80)
  - Image Fit: contain
  - Font Size (max): 19
  - Font Weight: normal
- iOS Config** (code)
  - iOS Color: [Color Picker]
- Portal Config** (code)
  - Collapsible Sidebar:
  - Text Align: center
  - Add Property --

At the bottom of the configuration panel, there are expandable sections for "Profile Config" and "Menu Options", and a "+ Add" button. A "Save & Publish" button is also visible at the bottom right of the interface.

# App Builder

## Tile configuration

- Title
- Color
- Etc.



App Manager App Builder

Device Samsung Galaxy S10 W 360 H 760

Ido TAU Libraries

**יצירת קשר**

Menu Option Config

Title יצירת קשר

Metadata Tag

Recents Icon <https://portal.ombiel.co.uk/assets/ExLibrisLibrary/TAU/Centr>

Roles הספרייה המרכזית : Default

Tags No tags exist

Disabled

**Tile Config**

Corner Radius (pixels) 7

-- Add Property --

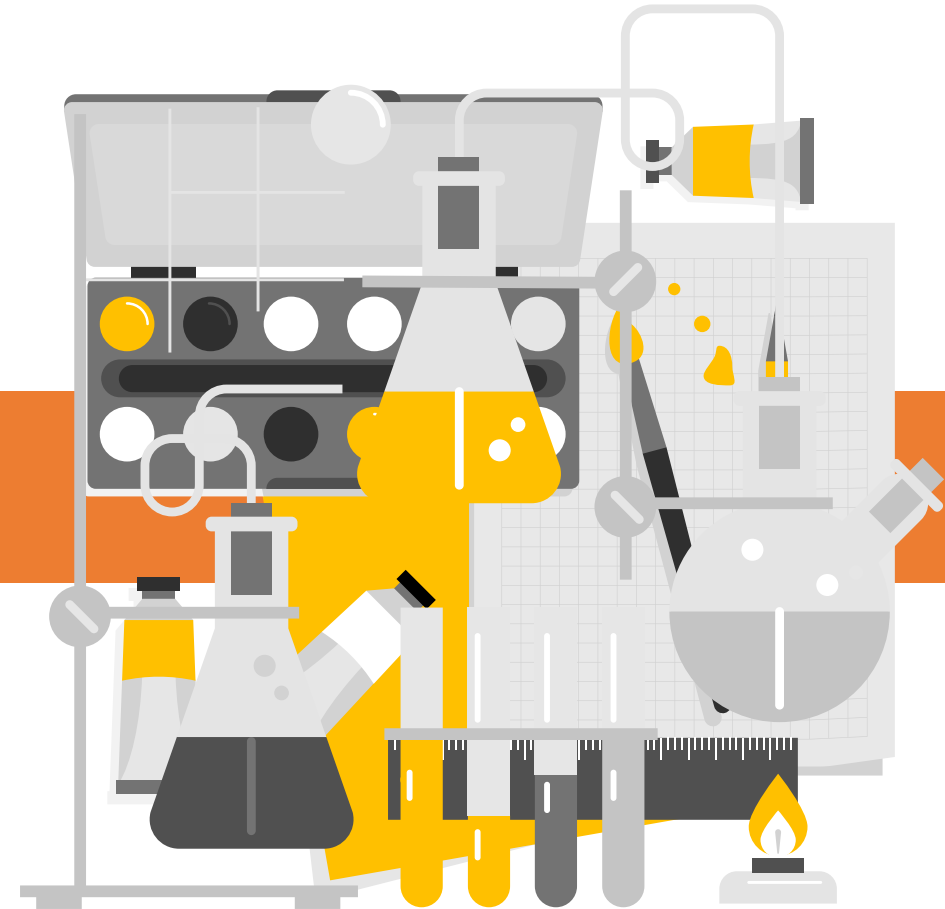
- Add Property --
- Action (URL)
- Background Color
- Description
- Full Text Overlay
- Full Width Icon
- Hide
- Hover Background Color
- Hover Text Color
- Image
- Icon
- Image Fit
- Font Size (min)
- Font Size (max)
- Font Weight
- Text Overlay
- No Label
- Text Align
- Text Color
- Tile Height



# Creative Studio

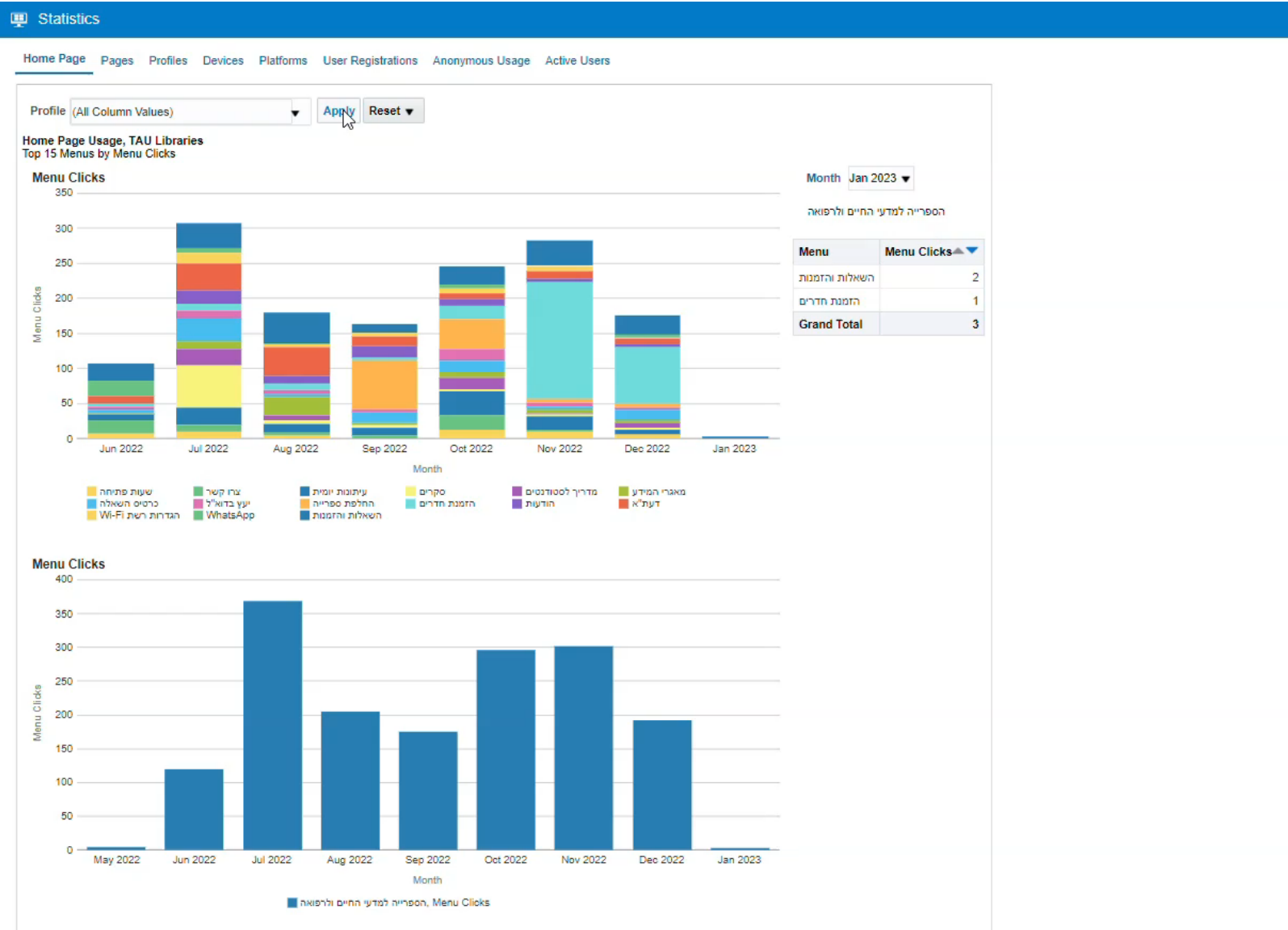
## Tool to create app pages

- **Templates\Blank**
- **Basic & advanced configurations**
- **Creative, Not Intuitive**



# Creative Studio

The screenshot displays the Creative Studio interface for building a mobile application. The top toolbar contains icons for 'Add new', 'Save', 'Edit', 'Delete', 'Zoom in', 'Zoom out', 'Reset', 'Preview', 'Fullscreen', and 'Export'. Below the toolbar, the 'Menu options' panel on the left provides a search bar and a list of components such as 'Libraries', 'Switch Language', 'Switch library PG', 'Test beta role', 'test rachel', 'הודעות', 'הודעות מ"מ', 'הספרייה להפרעות בתקשורת', 'טפסים', 'יצירת קשר', 'מדע שימושי', 'ספריות מחלקות', 'ספרים אלקטרוניים', 'עיתונות יומית', 'קישורים שימושיים', and 'שעות פעילות'. The central workspace is divided into 'HTML' and 'CSS' tabs, showing the underlying code for the app's layout. The right side of the interface shows a preview of the mobile app, which includes a banner for 'ספרייה המרכזית ע"ש סורסקי', a 'צרו קשר' (Contact Us) section with contact details, and a 'פרטי התקשרות והגעה' (Contact and Location) section with icons for email, phone, and WhatsApp, along with a map of the library's location.



App

Pages

Profiles

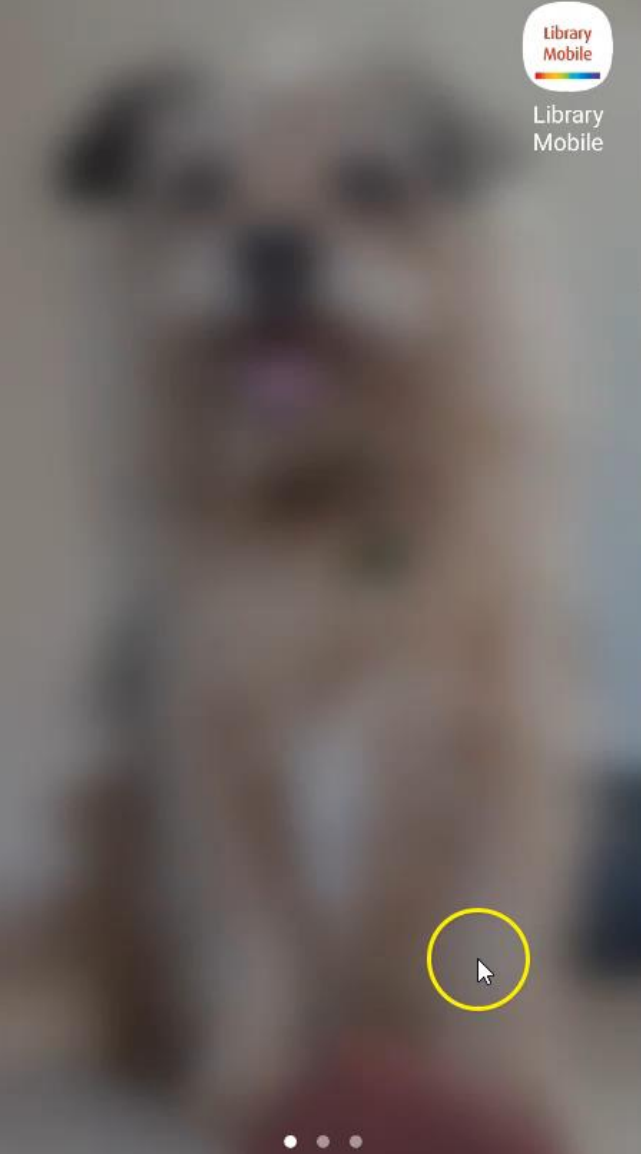
Devices

Platforms

Profile comparison



Library  
Mobile



# Soft launch

- Printed ads at the reference desk
- Staff introduction
- Teasers

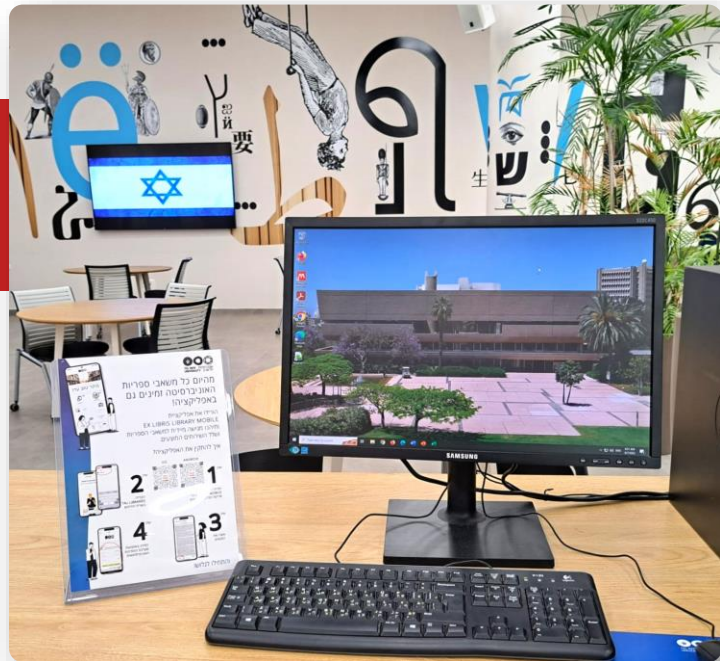
Be the first to try out the new libraries app  
us to an exposure meeting  
the new application





# Advertising by Exlibris

A5, A4, A3, rollup, bookmarks



# Social media




- Official launch
- Special features
- Facebook, Instagram



# Primo vs Primo VE

Interface of the 'live tile' is working better with Primo VE

Loans & Requests  
השאלות והזמנות

<p>Due soon</p>  <span style="background-color: #ADD8E6; border-radius: 50%; padding: 2px 6px; margin-left: 10px;">1</span> <p>החזרה בקרוב</p>	<p>Orders</p>  <span style="background-color: #ADD8E6; border-radius: 50%; padding: 2px 6px; margin-left: 10px;">0</span> <p>הזמנות</p>	<p>Overdue</p>  <span style="background-color: #ADD8E6; border-radius: 50%; padding: 2px 6px; margin-left: 10px;">0</span> <p>באיחור</p>
--	---	--

# Loans\Request

## Interview #1, First-year medical student on the 4-year Program:

”As an example, in loans, I would like to know when the next return is due or even the item's name.”



Library Card



Not renewable

More Items

# Right to left

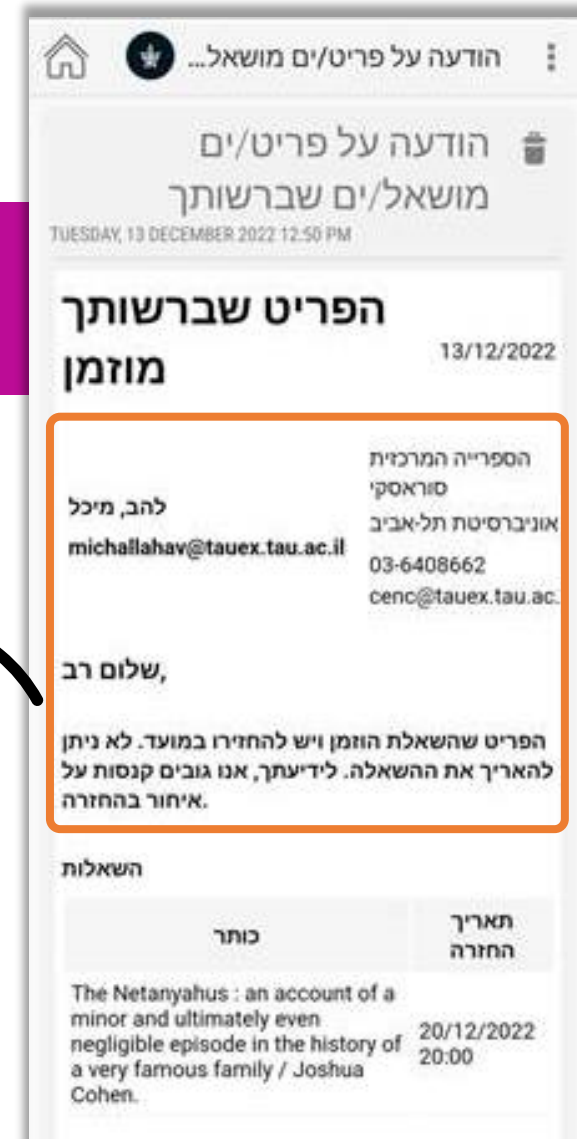
RTL writing are aligned as LTR

For English speakers, it looks like this:

Dear Sir/Madam

The library uses an automatic loan renewal service. The following items were not renewed and should be returned according to their due date.

We would like to remind you that fines are charged for overdue loans.\*





# What's Next?

Students have produced some great ideas for future development



**Augmented Reality navigation:**  
the phone's camera will guide you  
to the right book on the shelf

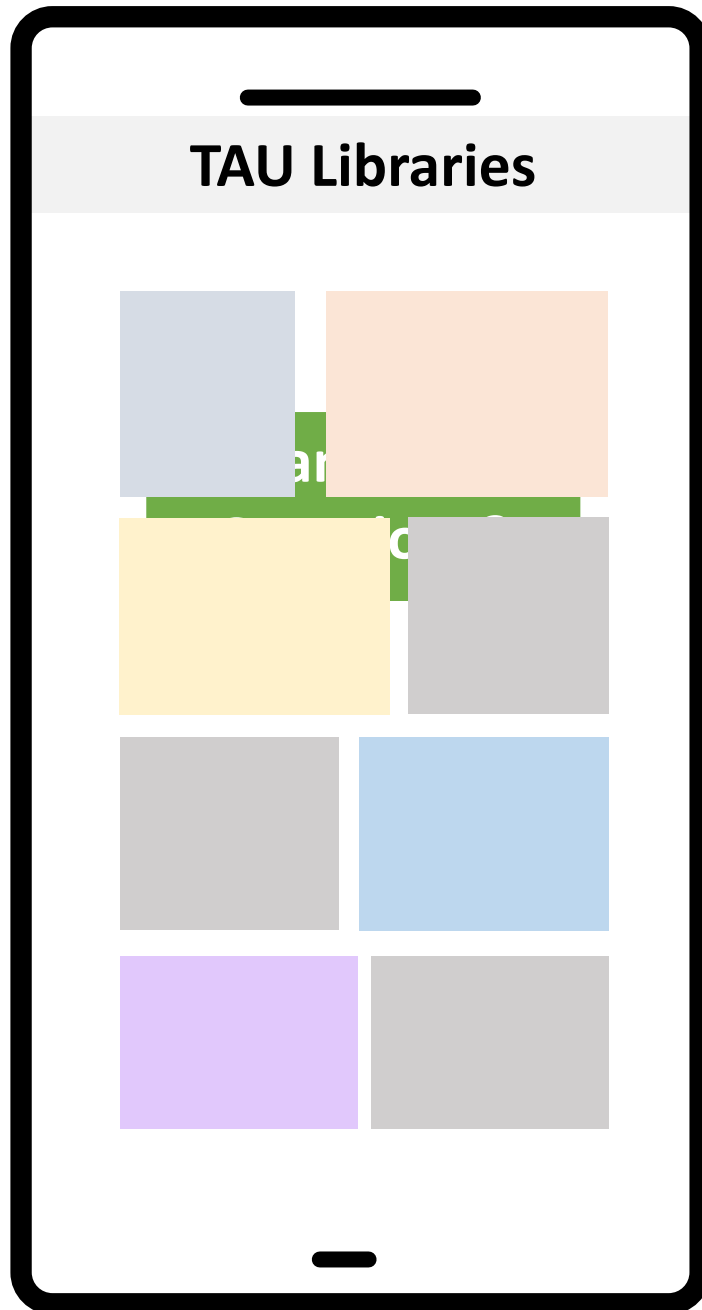


A '**reading list**' within the app  
allows you to access your favorite  
books quickly and easily



**Reserving working stations:**  
Dynamic and colored tiles to  
indicate occupancy

# TAU Libraries



Ido Aharon

[idoah@tauex.tau.ac.il](mailto:idoah@tauex.tau.ac.il)