



ANCHORS AWAY, ALMA: USING ALMA TO RUN A SHIP'S LIBRARY

Lauren Bradley
Noah Grover
SUNY Maritime College

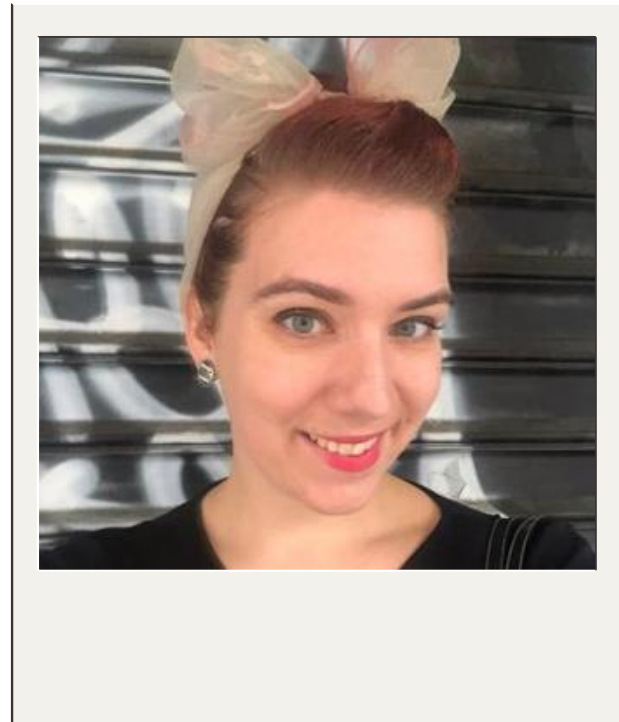
Agenda

- About Us
- Previous Ship's Library
- Configuration Changes
- Collections and Metadata
- Successes
- On-Going Issues

About Us

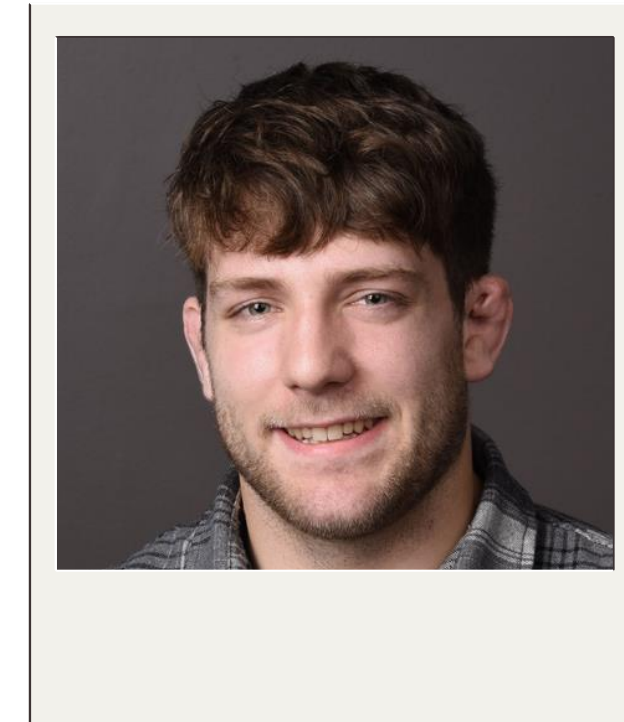
Lauren Bradley

Discovery & Electronic Resources
Librarian/Ship's Librarian
lbradley@sunymaritime.edu



Noah Grover

Technical Services Librarian
ngrover@sunymaritime.edu



SUNY Maritime College



- State-run maritime college in the Bronx, NY
- Offering STEM degrees
 - 60% earning MMC License
- Enrollment: 1,400 FTE
- Celebrating 150 years

Summer Sea Term



- Cadets need to earn Sea Time
- 180+ Days
- Training Ship Empire State VI and VII

Empire State VI

- Recreational Reading and Study Materials
- Ran on OpenBiblio
- Brief Records
 - Title
 - Author
 - Barcodes
- Bungee cord madness



SUNY Maritime College



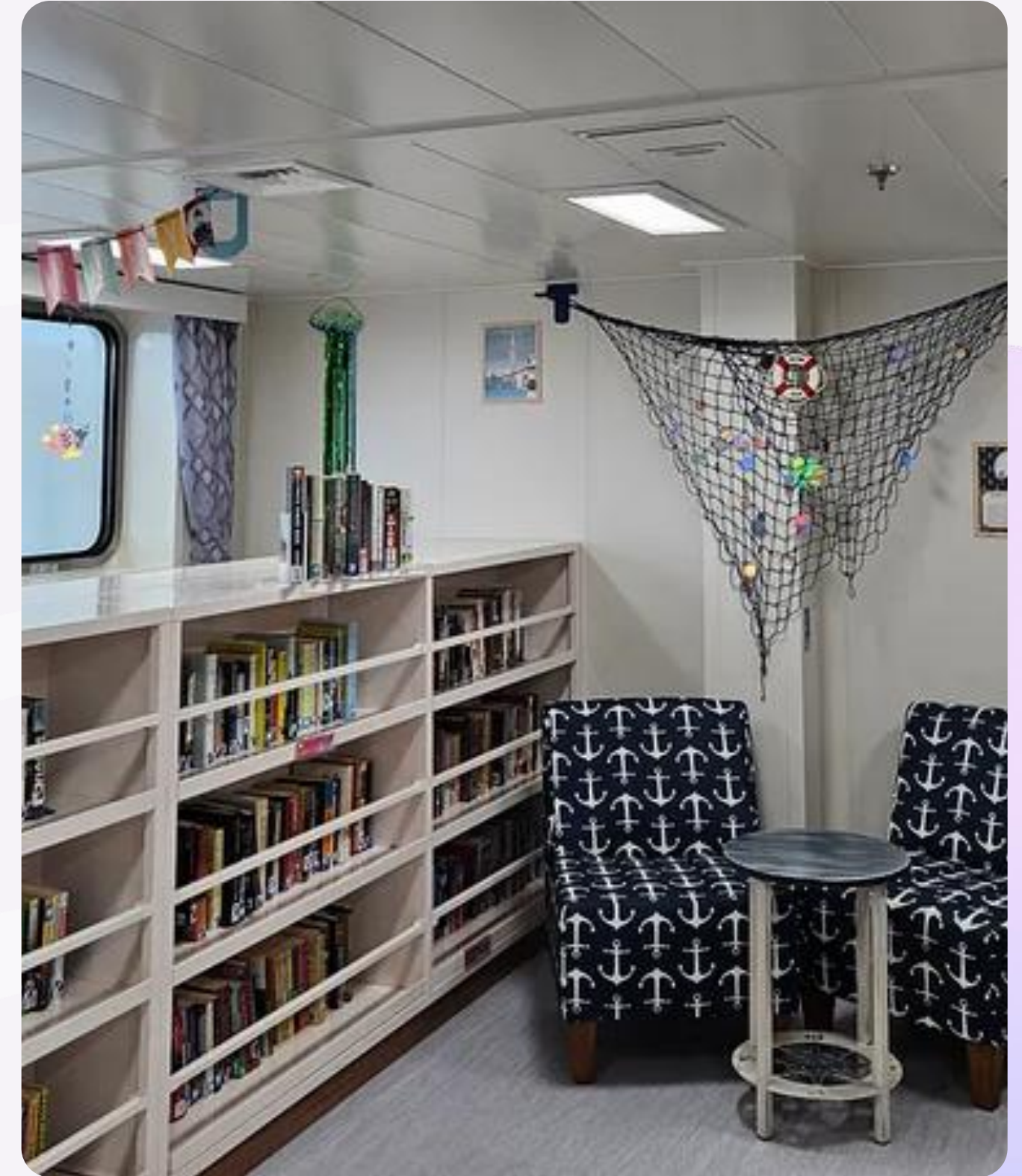
Empire State VII



SUNY Maritime College

New Ship's Library!

- Internet-Capable: Hello, Alma!
- Contains around 2,400 items
- Purpose-built ship shelving
- OpenBiblio server stack: not allowed





Configuration Changes

- - New Library Name/Code
 - Empire State VII/SHIP
 - New Locations
 - By Genre
 - SST Analytics Reports
 - Outstanding Ship Loans
 - Number of SST Loans

Metadata: Record Migration

- Legacy records are very brief
- Prevent interoperability with NZ/OCLC

Physical titles ▾ Location ▾

Record View

BIBFRAME

LDR	00183nam a2200073la 45e0
001	991933000104839
008	230223s9999 xx 000 0 und d
100	_ a Cussler, Clive
245	_0 a White Death
852	_ c ADV p 30238002265429 h Cussler

MMS ID
991933000104839

Suppress from Discovery
No

Export to WorldCat
Don't publish

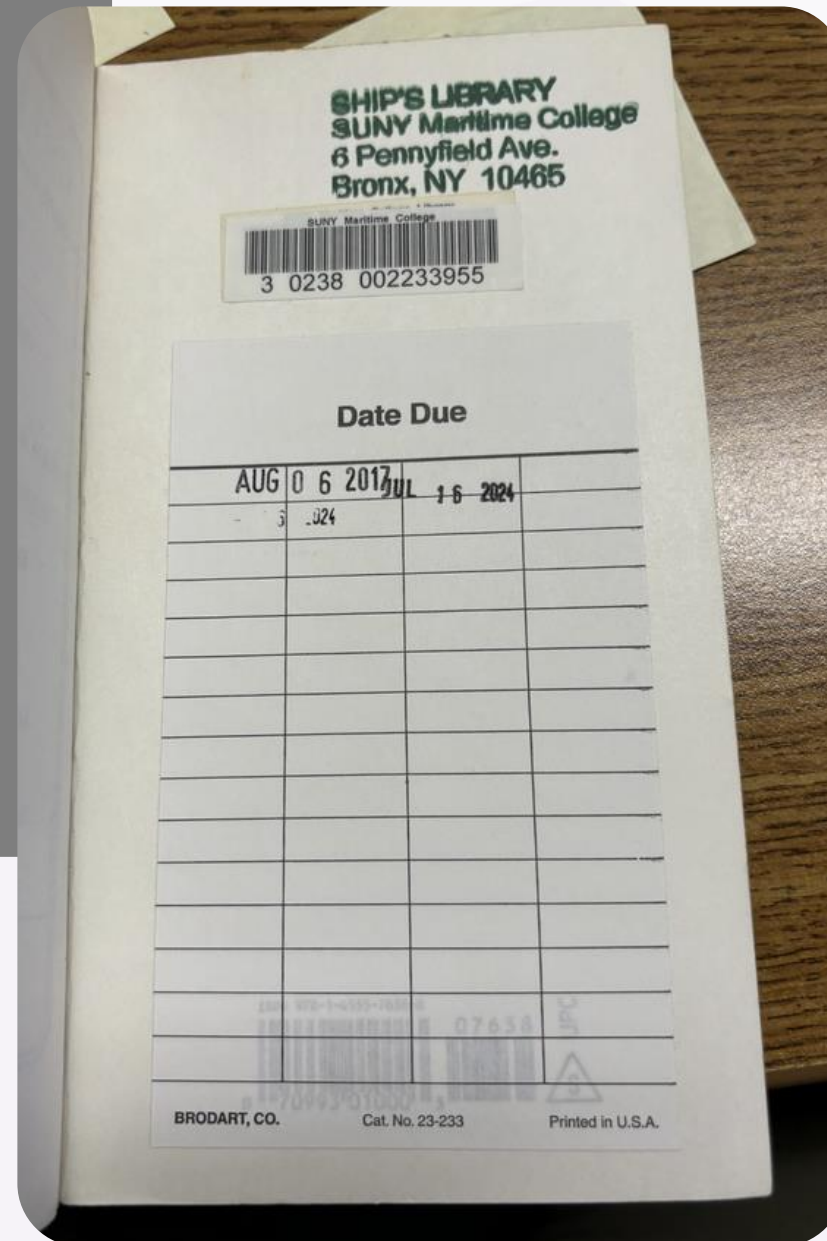
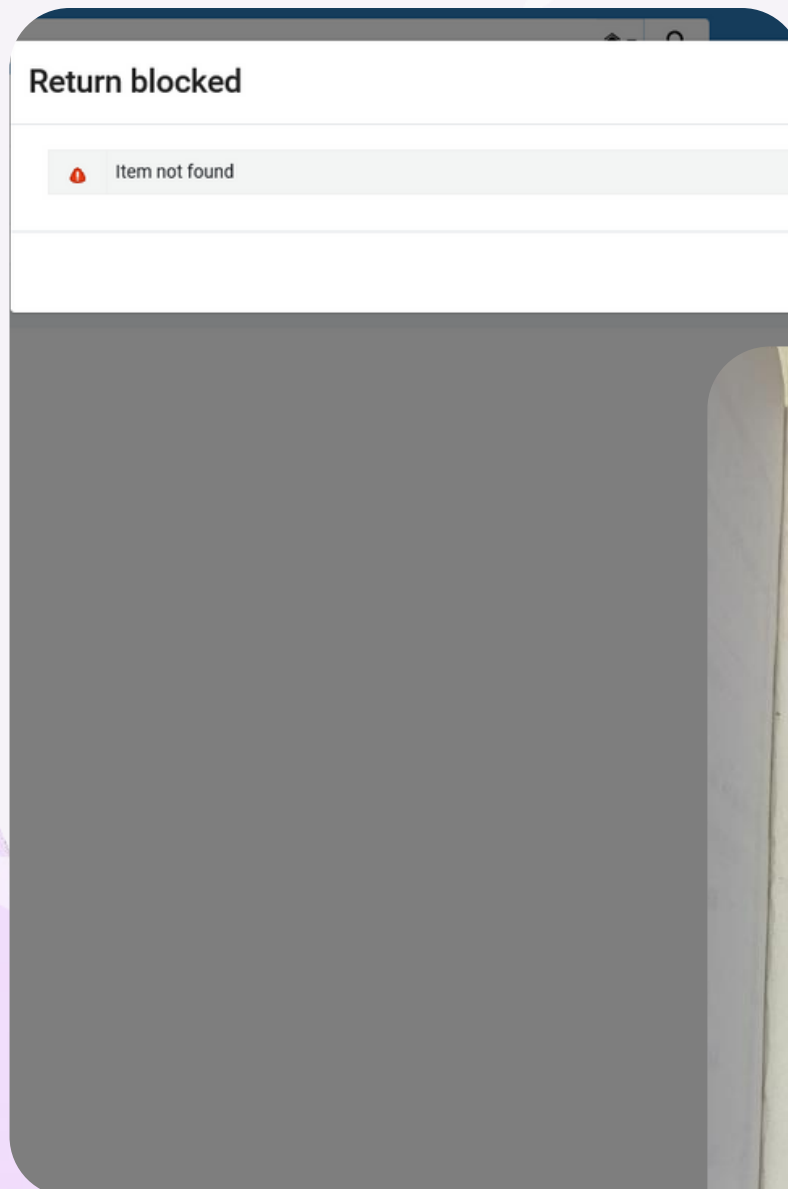
Bibliographic Rank
32

Brief level
10 - Full

Record Format
marc21

Suppress from external search
No

Originating system
OTHER



Metadata: Record Migration

- Migration workflows led to:
 - Gaps in the catalog
 - Numerous duplicate barcodes
 - Lost data

Metadata:

Items Information

- - Temporary Location: Out to Sea (SEA)
 - non-loanable items
 - Using item types for the first time
 - Video games
 - Loan policy and TOU issues
 - Discovery of defunct item types
 - Unassigned Location

New Workflows & Policies

- Ship's Librarian needs to be able to create brief records quickly in Alma
- Tracking DVDs and Board Games taken aboard
- Acquisitions strategy for the Ship's Library

Successes

- - 340 loans
 - 117 crew/faculty
 - 159 Students
 - Stats accessible shoreside
 - Lending more seamless
 - Ship's Library remains very popular!



On-Going Issues

- - Long-term migration clean-up
 - Internet reliability/cybersecurity challenges
 - Lost and loan profile issues
 - Conceptual issues:
 - Non-fiction collection
 - Is this one library or two?



Thank You

lbradley@sunymaritime.edu
ngrover@sunymaritime.edu

Ship's Blog: medium.com/@empirestate