



# Library Analytics

Powered by Connections



Raphael Gabbay | Library Platform Team

# Agenda

It's all about connecting



## Collection Development Initiative

- Connecting data to meaningful insight
- Connecting functional areas
- Connecting institutions



## Operational

- Connecting external data
- Connecting with workflows
- Connecting privately and securely
- Connecting with your colleagues
- Connecting with the community

# Collection Development Initiative





# Collection Development Focus Group

Launched: June 2023

## THANK YOU



UNIVERSITÀ  
DEGLI STUDI  
DI MILANO



THE UNIVERSITY  
of EDINBURGH

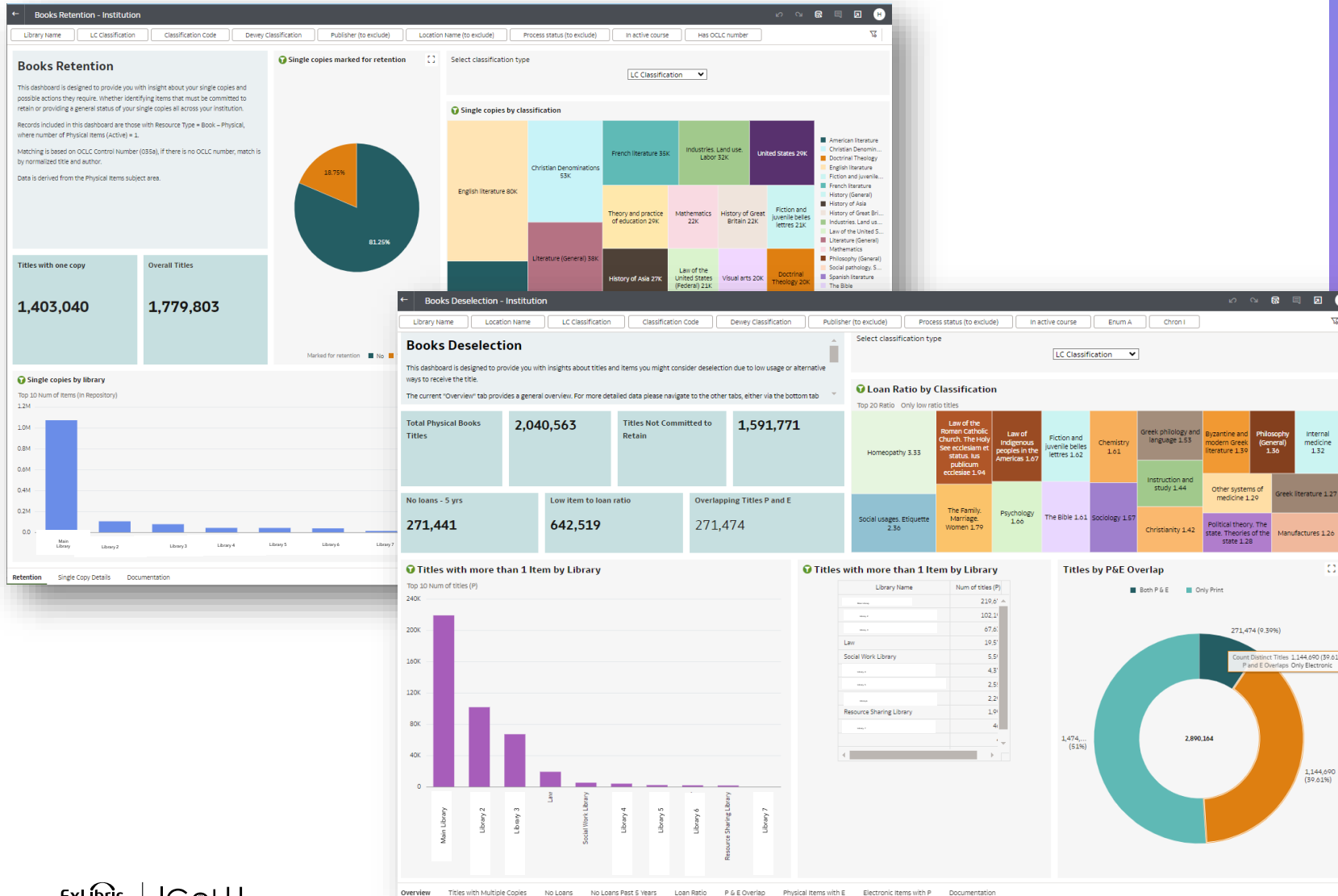


# Connecting Functional Areas

## Retention and Deselection Data visualizations - Feb 24 Release

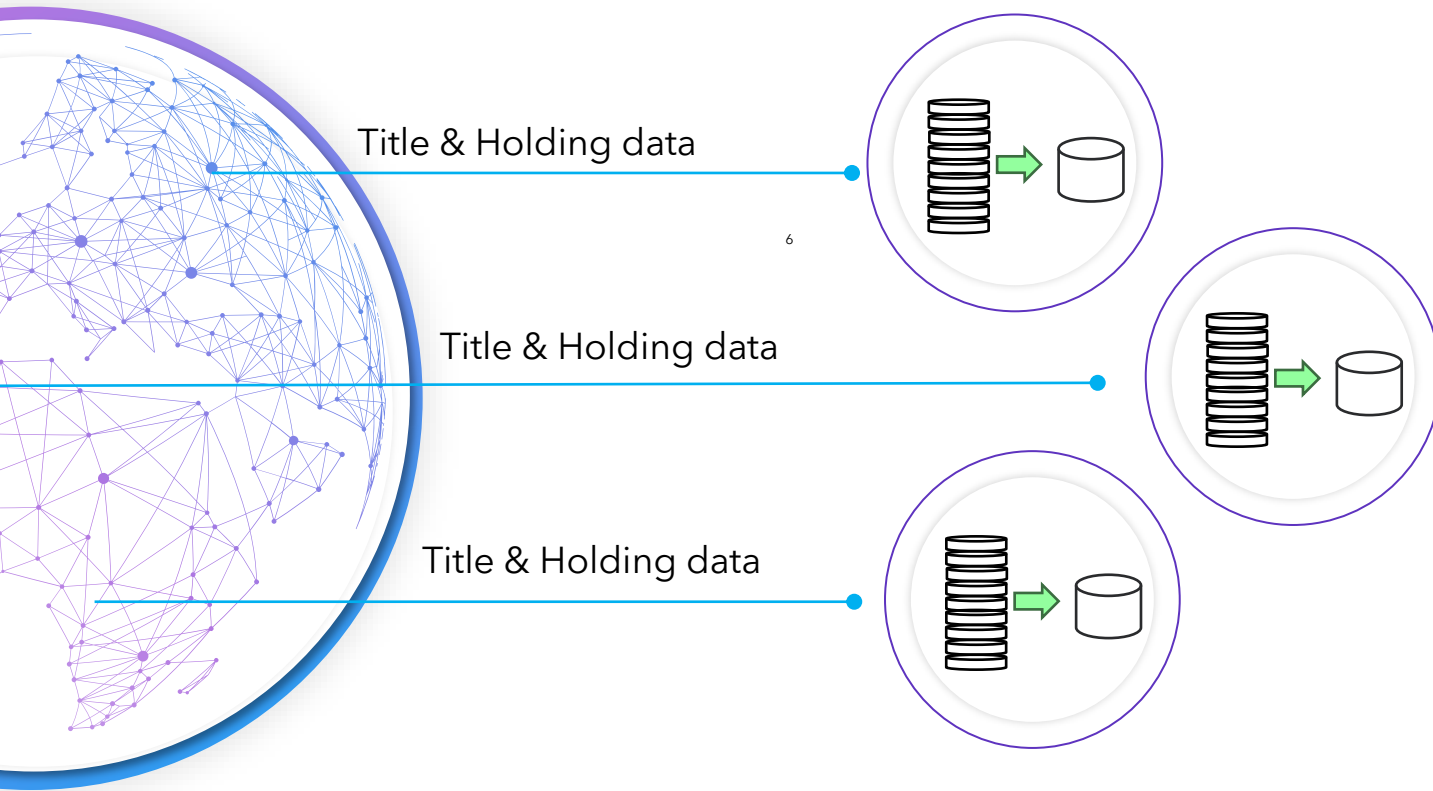
## Supporting Institution Level Collection Development

1. How many of my single copies are marked for retention
2. How many of my titles are held both as P and E\*
3. No loans in the past 5 years\*
4. Which library should consider a deselection project



# Collecto Analytics

Cross institution analytics



## Supporting Consortia & shared print

1. Based on Mutual consent
2. Regional
3. Shared print & collaboration
4. Gap Analysis and discipline expansion



# Collecto Analytics: A collaborative member view perspective

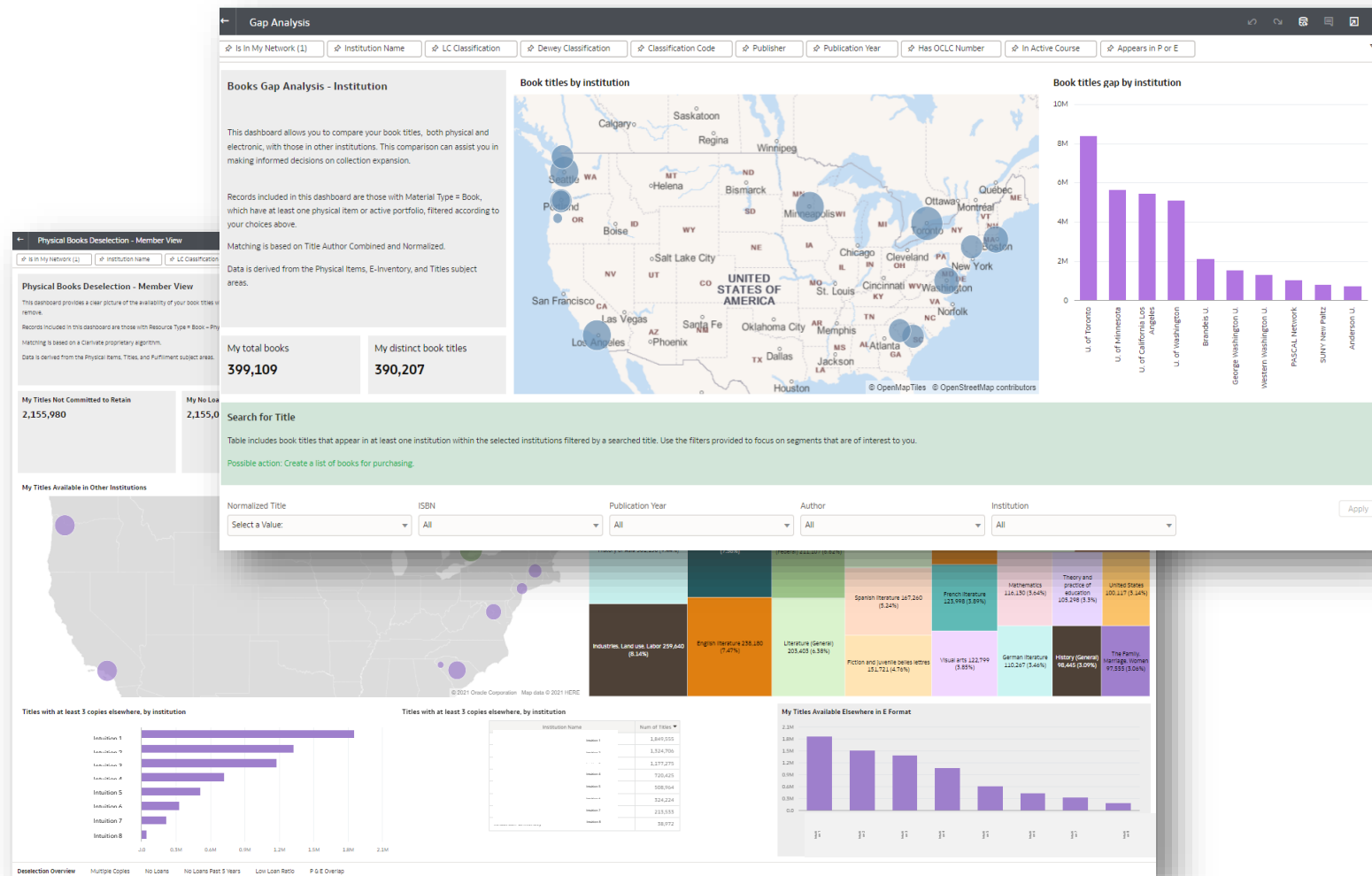
## Collaborative member view

### Collaborative

- Which institutions hold similar titles in my group
- Which of my low loan ratio titles are available elsewhere

### Gaps

- What do other institutions hold which I don't?
- Where do I hold more resources than others?



# Simplified Edition Fields



## Purpose

Differentiate between editions of the same title for reporting.

Edition	Edition Simplified (Num)	Edition Simplified (Text)	Edition Simplified (Combined)
1st ed.		Other	
"First edition."	1	Other	1
"New and rev. ed."		New	New
"Second revised edition."	2	Revised	Revised 2
"'Bill of rights' anniversary edition."		Anniversary	Anniversary
"... a reorganized, updated version of the 1988 Handbook."	1988	Other	1988
"... ad reverendissimvm ac illvstrissimvm principem ac dominvm D. Jvlivm episcopvm herbipolensem ac franciae orientalis ducem & c."		Revised	Revised
"1. auflage."	1	Other	1
"1.-10. tausend."	1	Other	1
"11,500th ed."	11	Other	11
"14th printing, revised (1953), reprinted 1957."	14	Revised	Revised 14
"1988 ed."	1988	Other	1988
"1991 edition"	1991	Other	1991
"1re éd., 30 novembre 1942."	1	Other	1
"1re édition, 29 février 1944."	1	Other	1
"1re édition."	1	Other	1
"1st American ed."	1	American	American 1
"1st American ed."--verso of t.p.	1	American	American 1
"1st American ed..."	1	American	American 1
"1st American edition"--verso of t.p.	1	American	American 1
"1st. Free Press hardcover edition."	1	Other	1
"2 ed."	2	Other	2
"2. verb. Aufl."	2	Other	2
"2.Aufl."	2	Other	2
"2a ed. interamente rifatta del volume 'Aspetti di storia dei movimenti religiosi in Italia'."	2	Other	2

- Identifies editions, not for cataloging
- Sorts and identifies numeric values
- Prioritizes ease of use over perfection



# Operational Analytics



# Connecting External Data

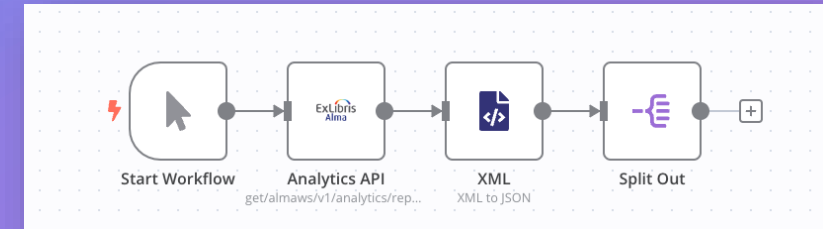
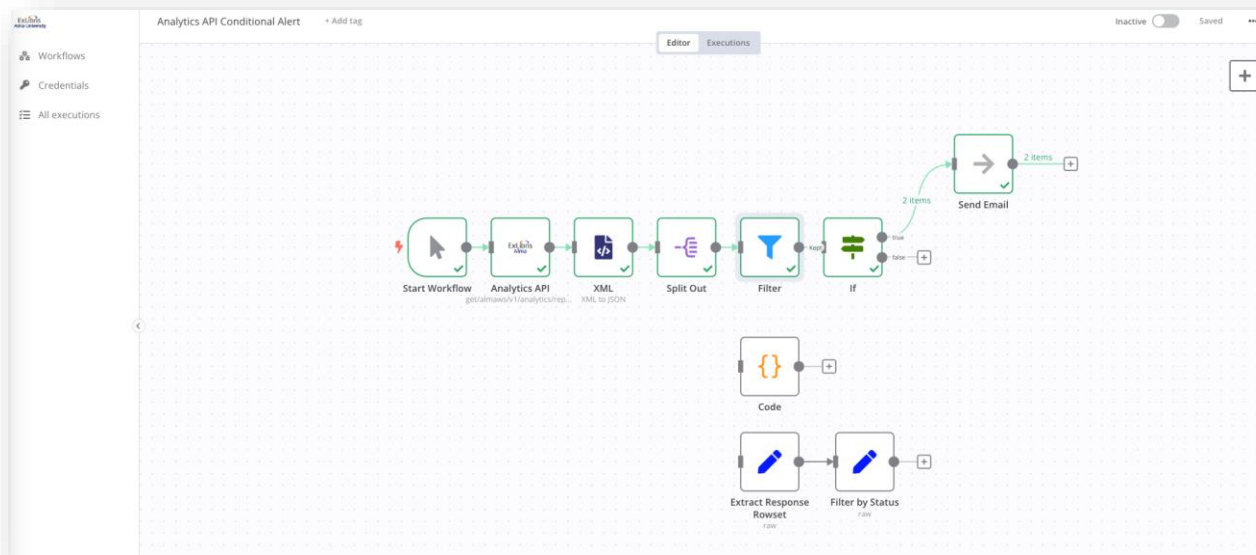
Reference Data & Gate Counts from  
SpringShare LibInsight

The screenshot displays the 'Integration Profile' configuration page. It includes sections for 'SPRINGSHARE GENERAL INFO' (with fields for Client ID, Client Secret, Client Host, and Active/Inactive status), 'GATE COUNT API' (with Gate Count Dataset ID), and 'SPRINGSHARE REFERENCES API' (with References Dataset ID). A 'Subject Areas' tree is overlaid on the right, showing a hierarchy: External Vendor Data > Springshare > -- Springshare -- Tooltip (highlighted), Springshare Dates, Springshare Gate Counts (containing Gate Count, Gate Count Library), Springshare Reference Data (containing Number of Chats, Number of FAQs Viewed, Number of SMS, Number of Tickets), and Institution.

- Libsight API via Alma Integration profile
- New "External Vendor" Subject Area
- New Gate Counts and Reference reports in IPEDS/ ACRL OTB Dashboard

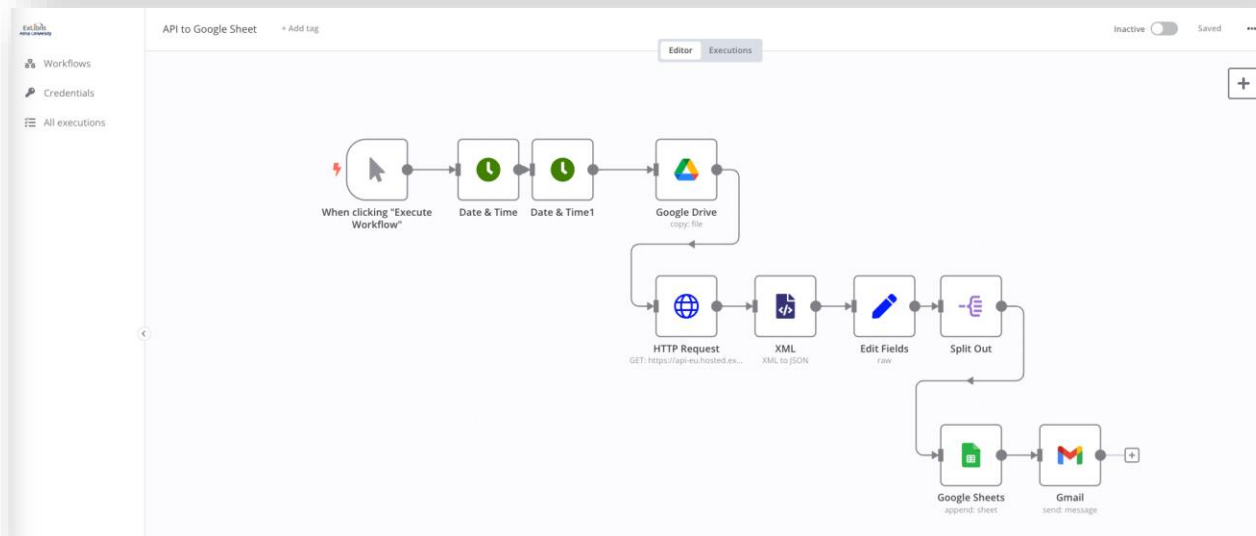


# Open Workflows- Analytics Integrations



## Unlock the Potential

1. Trigger an action based on specific content on a report
2. Integration with external software and tools (automated SMS, Gmail etc.)
3. OTB Analytics integrations workflows



# Connecting Privately and Securely



# Analytics Design Role Granularity

## Designs Analytics Functional Areas

- Fulfillment
- Resources
- Acquisitions

## Designs Analytics Users

- Access to user information

## Designs Analytics System Usage

- System Events
  - API Usage
- Analytics Objects Usage
  - DARA analytics

# Analytics Design Role Granularity Benefits

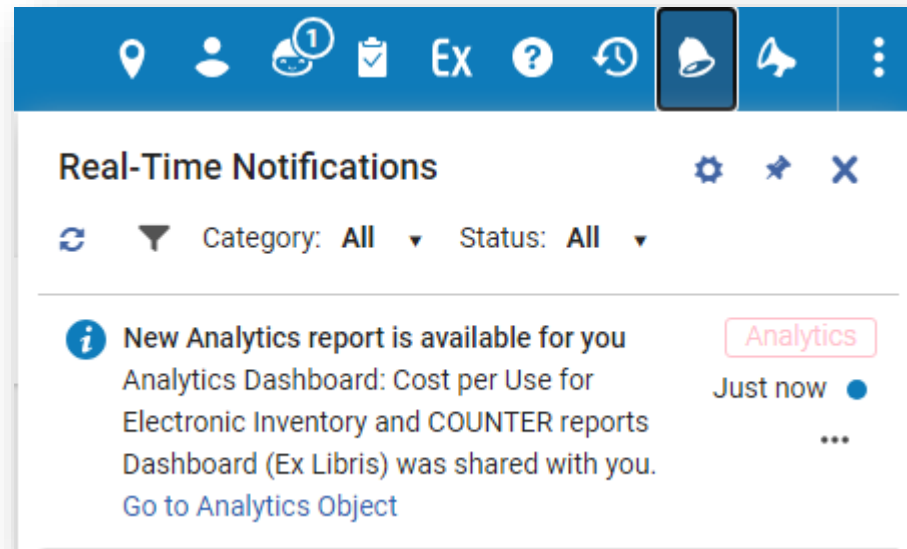
- More Privacy and Security
- Multi layered approach with maximum customization
- More Analytics Designer Roles in your Institutions



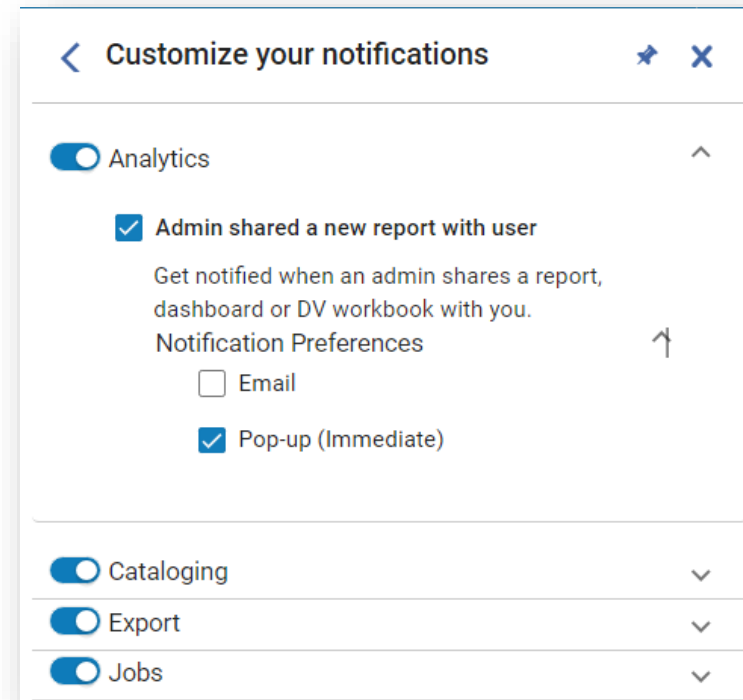


# Connecting With Your Colleagues: Notification Feature

Get notified when an admin shares an analytics object.



Customize your notifications



# Connecting with the Community: Analytics Community of Practice

Data Dictionary: Ongoing Analytics Documentation Enhancement

## E.G Fines & Fees Subject Area

Field	Description	Additional Information
Associated Course Code	The code of a course that was active during the time the item was loaned. The item belonged to a citation that was part of the reading list of the course.	
Associated Course Name	The name of a course that was active during the time the item was loaned. The item belonged to a citation that was part of the reading list of the course.	
Additional Fine Fee Transaction ID	Displays an additional identifier of the fine or fee transaction	To view the Fine Fee Additional Transaction ID in Alma: 1. View a patron's fines and fees. 2. Filter by status <b>Closed</b> or retrieve a fine that had a partial payment. 3. Select the <b>Remaining Balance</b> link (which may be 0.00 on a closed fine fee). 4. The value of the Alma Analytics Fine Fee Additional Transaction ID is in the Transaction ID column.
Currency	Displays the actual currency of the fine and fee	
Dewey Classification Top Line	Displays the first 3 digits of the Dewey classification	
External ID	Displays the ID of the fine or fee in the originating system	
Fine Comment	Displays the content of the comment associated with the fine or fee	
Fine Fee Created By ID	Displays the user ID of the Staff Operator who created the fine or fee transaction	
Fine Fee Creation Date	Displays the date that the fine and fee was created	

## Funds Expenditure Subject Area

Field	Description	Field Location in Alma	Additional Information	Data Type	Data Size
Dewey Classification Top Line	The first 3 digits of the Dewey Classification.	--	Classification information comes from the bibliographic record.	VARCHAR	15
Exchange Rate	The exchange rate between the fund's currency and that of the invoice.	Acquisitions > Acquisitions Infrastructure > Funds and Ledgers (select a fund) > Transactions Tab > [view a transaction] > Exchange Details Section	This field does not appear for allocation type transactions.	DOUBLE	
Exchange Rate Date	The date that the exchange rate was calculated.	Acquisitions > Acquisitions Infrastructure > Funds and Ledgers (select a fund) > Transactions Tab > [view a transaction] > Exchange Details Section	This field does not appear for allocation type transactions.	DATE	
Explicit Ratio	Indicates (Yes/No) if an exchange rate is set between the fund's currency and that of the invoice.	Acquisitions > Acquisitions Infrastructure > Funds and Ledgers (select a fund) > Transactions Tab > [view a transaction] > Exchange Details Section	This field does not appear for allocation type transactions.	VARCHAR	4000
Fund Transaction Reference	A number that can be used to reference a particular allocation to a fund, set from the Transaction tab of the Funds and Ledgers page	Acquisitions > Acquisitions Infrastructure > Funds and Ledgers (select a fund) > Transactions Tab > [view a transaction] > Transaction Section  The label in Alma is <b>Transaction Reference</b> .		VARCHAR	255

## Additional Information

- Field location in Alma
- Data Type
- Data Size

Funds Expenditure tables finished in May. Hurray!

Purchase Requests is under work. Scheduled to finish by end of 2025 H1

# Connecting with the Community

Additional Local Parameters: Community Request  
(NERS request candidate)

June Release: 20 additional local parameters to the bibliographic details to a total of 30!

**NEXT**

**Additional Holdings Local Parameters  
2025 H2\***

\*Subject to change

- 901 - Local Param 01
- 940 - Local Param 02
- 999 - Local Param 03
- 300 - Local Param 04
- 998 - Local Param 05
- Local Param 06
- Local Param 07
- Local Param 08
- Local Param 09
- Local Param 10

- Local Param 11
- Local Param 12
- Local Param 13
- Local Param 14
- Local Param 15
- Local Param 16
- Local Param 17
- Local Param 18
- Local Param 19
- Local Param 20
- Local Param 21
- Local Param 22
- Local Param 23
- Local Param 24
- Local Param 25
- Local Param 26
- Local Param 27
- Local Param 28
- Local Param 29
- Local Param 30



# Agenda

It's all about connecting



## Collection Development Initiative

- Connecting data to meaningful insight
- Connecting functional areas
- Connecting institutions

## Operational

- Connecting external data
- Connecting with workflows
- Connecting privately and securely
- Connecting with your colleagues
- Connecting with the community





# Your Voice Matters!

Register now for our  
Voice of Customer survey  
launching October 22<sup>nd</sup>



Don't miss your chance to win a prize at IGeLU 2024 by registering for our survey!



[Sign up now](#)





# Thank You



© 2024 Clarivate

Clarivate and its logo, as well as all other trademarks used herein are trademarks of their respective owners and used under license.



# What is included and what is Premium?



## Included with Alma Subscription

---

- Institution data workflows
- Cross Institution Analytics (Limited Users)



## Premium Subscription

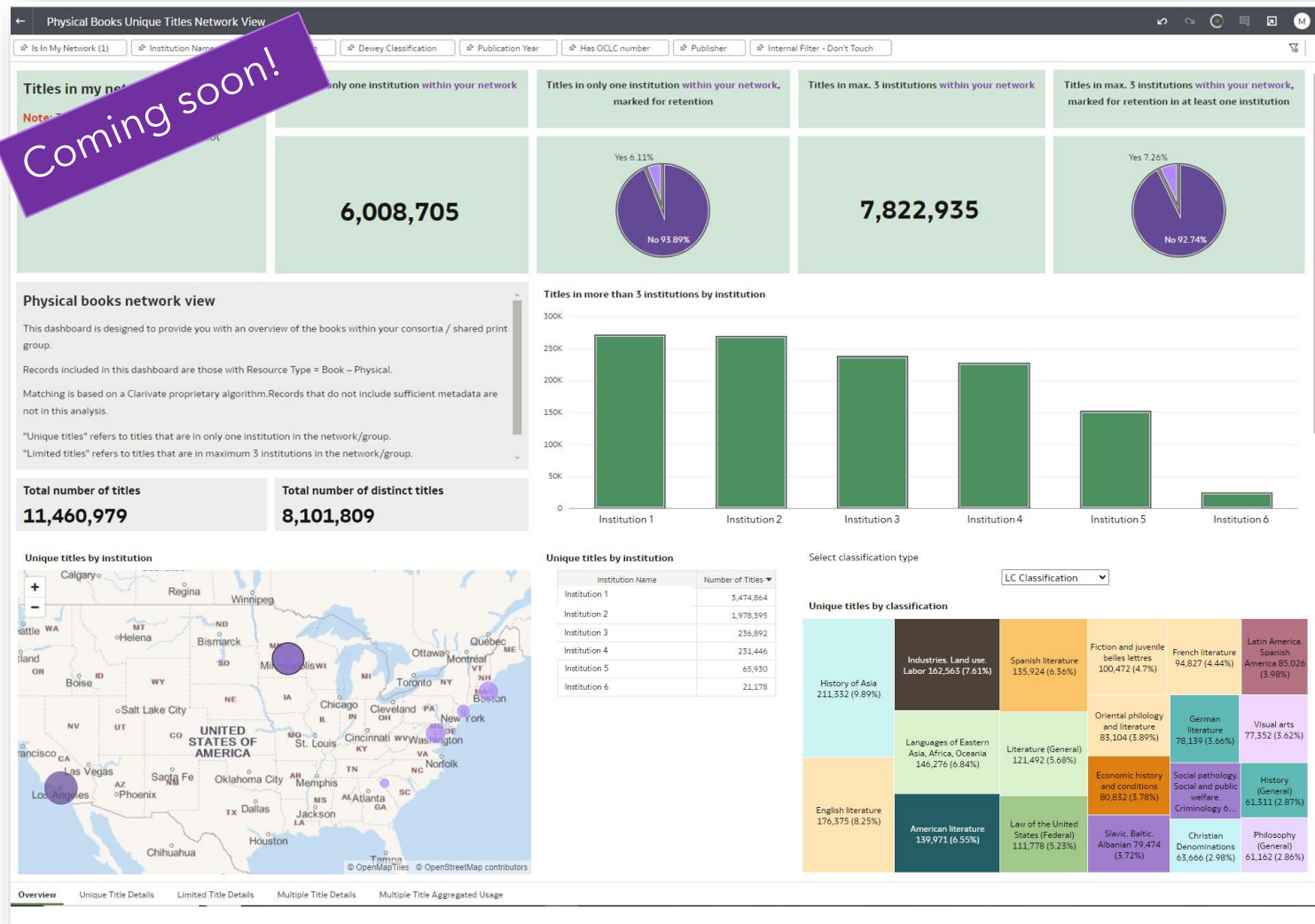
---

- Integrated Cross Institution Data in workflows
- Integrated additional Data Sources
- Shared Group Policy
- Cross Institution Analytics (Unlimited users)



# Consortial View: Physical Books

February Release



## High Level Consortial view

1. Which institutions hold the highest number of multiple titles?
2. How are certain classifications dispersed across a geographic region?
3. Which institution has the largest collection of unique titles per classification?