

IGeLU General Assembly



Dave Allen
Chair, IGeLU
chair@igelu.org



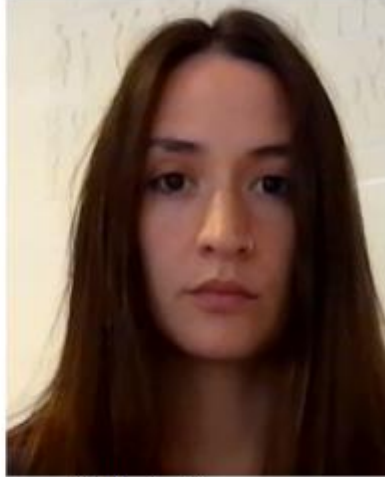
The Business Part of the Conference!



Siena Administration Team



Guido Badalamenti



Giulia La Versa



Duccio Maria Di Blasi



Fabrizio Di Fuccia

Newly Elected SC Members

- Asbjørn Risan, SIKT, Norway
- Birgit Hallerberg, Sciences Po Paris, France
- James Dodd, University of Oxford, UK



Unsuccessful Candidates

- Tsholofelo Maleho, University of the Free State Library, South Africa
- Dr Lynne Porat, University of Haifa, Israel



SC Members Retiring from the Committee

- Alex Forrest, University of Edinburgh, UK
- Augusto Ribeiro, Universidade Do Porto, PORTUGAL



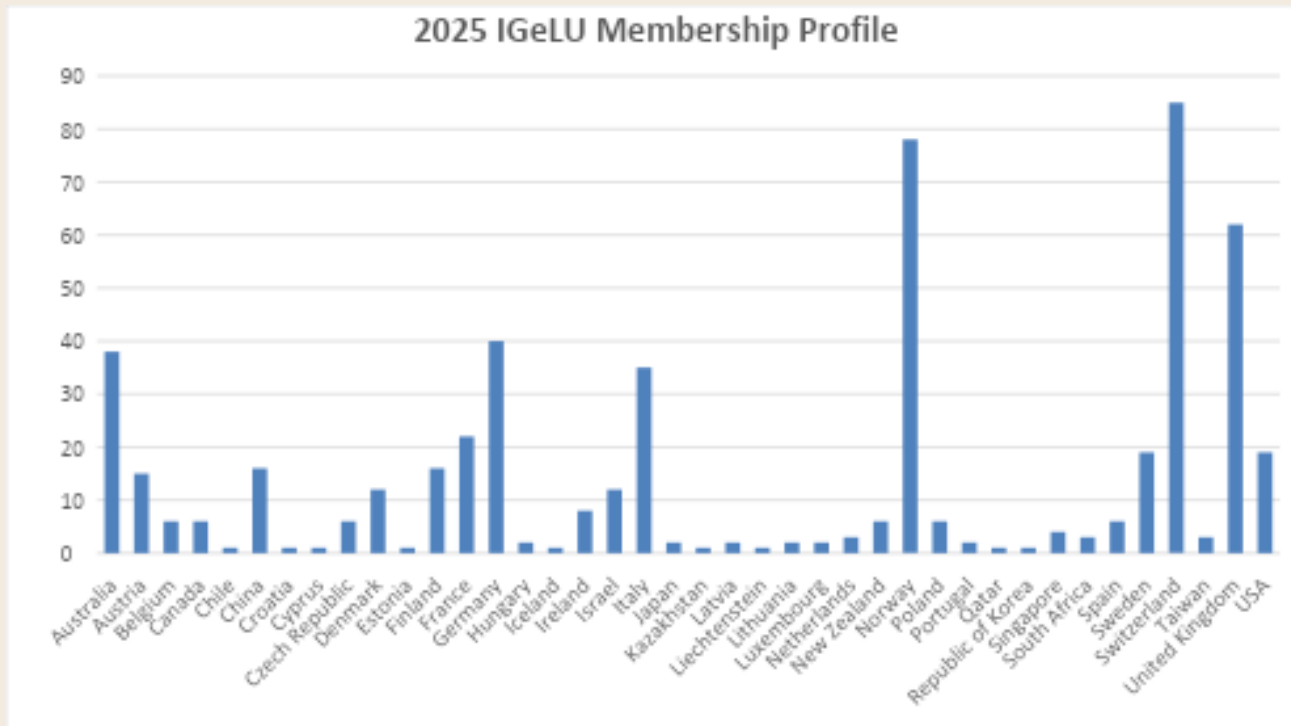
Other Election Results

- IGeLU's Financials Approved
- IGeLU's Chairs Annual Report has been approved

Other Election Results

- IGeLU's Financials Approved
- IGeLU's Chairs Annual Report has been approved

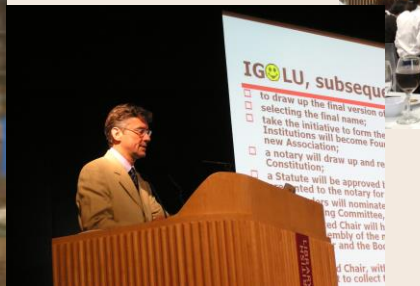
IGeLU Membership Profile



IGeLU Membership Record

- Administrative processes
- Product elections
- Emails need to be correct

IGeLU Treasurer – Guido Badalamenti



For Approval by General Assembly
IGeLU Treasurer
Giulia La Versa, University of Siena, Italy



For Approval by General Assembly
IGeLU Technical Officer
– Mehmet Celik, KU Leuven, Belgium



Questions ???

IGeLU Chair – chair@igelu.org

IGeLU Secretariat – secretariat@igelu.org

IGeLU Conference – conference@igelu.org

