

SLSP



Managing mass corrections in SLSP: approaches and experiences

17.09.2025, IGeLU conference in Siena
Raphaël Rey & Nikol Stepan



Nikol Stepan

Senior Data and System Specialist /
Business Analyst



Raphaël Rey

Team Leader System Operations

Agenda

1. Mass Corrections in a Consortium
 - a) Examples
 - b) Organizational Context
2. Tools
 - a) Alma integrated tools
 - b) External Database
 - c) Alma API Wrapper
3. Conclusion

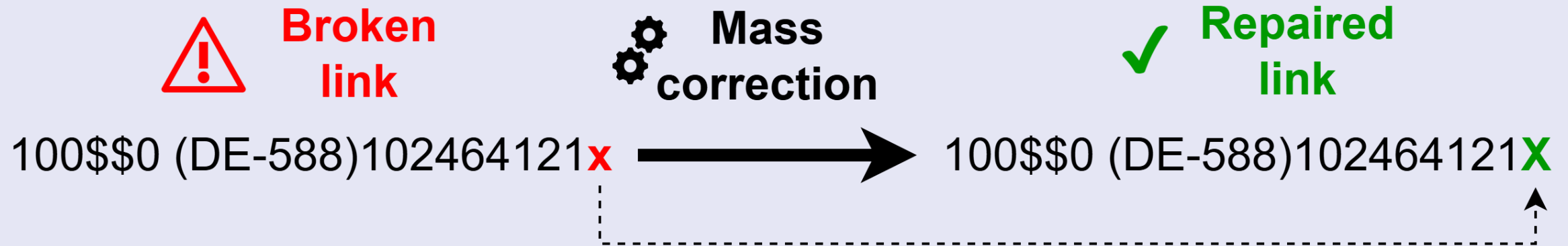


1. Mass Corrections in a Consortium

1.a Examples

GND ID with lower case x

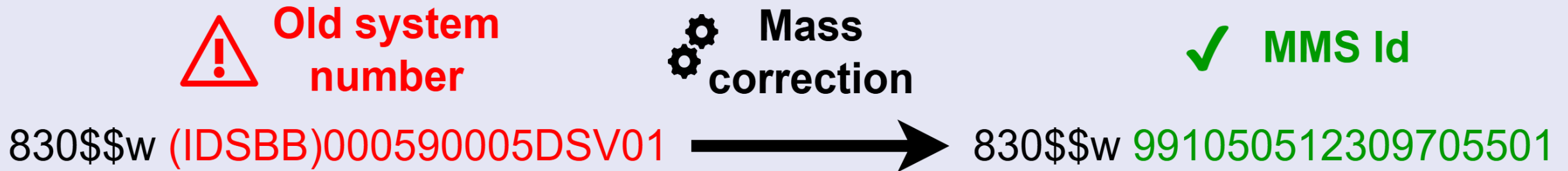
Link to DNB is broken → display in swisscovery and other services affected



1.a Examples

Replace \$w identifiers with MMS ID

In fields 76x, 77x, 78x, 800, 810, 811, 830, replace the “old” networks identifiers with the MMS ID



1.a Examples

772: 18'372

773: 1'402'324 **!**

780: 87'811

785: 73'442

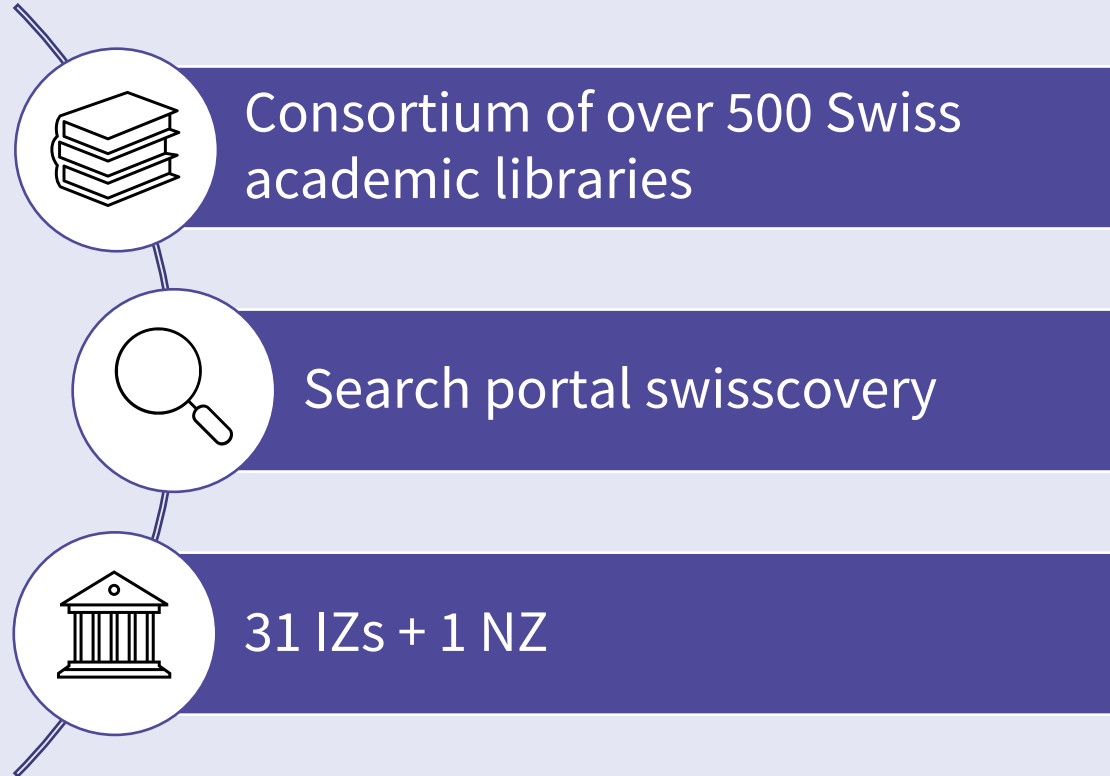
800: 330'568

830: > 3 million **!!**

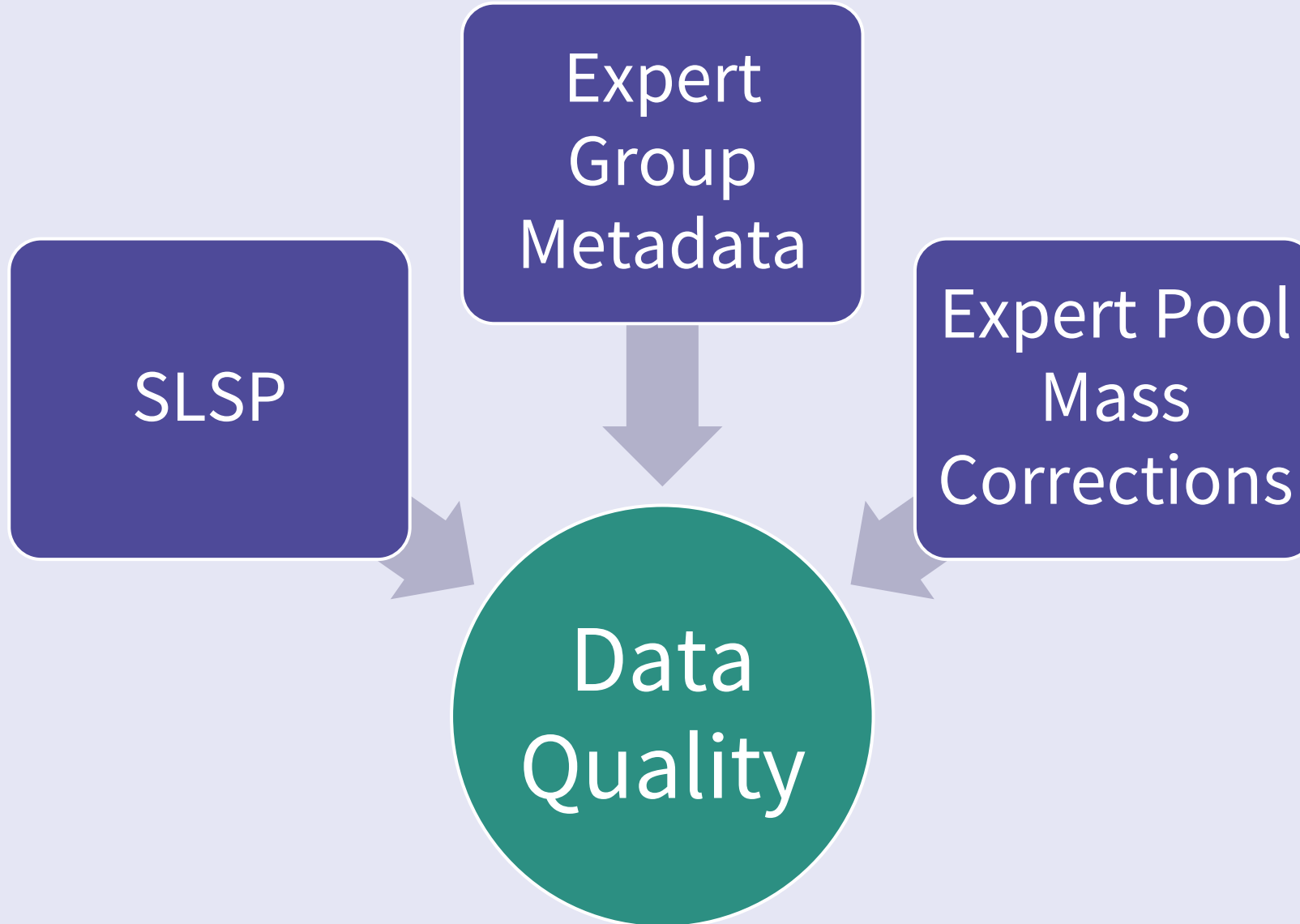
How to
do it



1.b Organizational Context

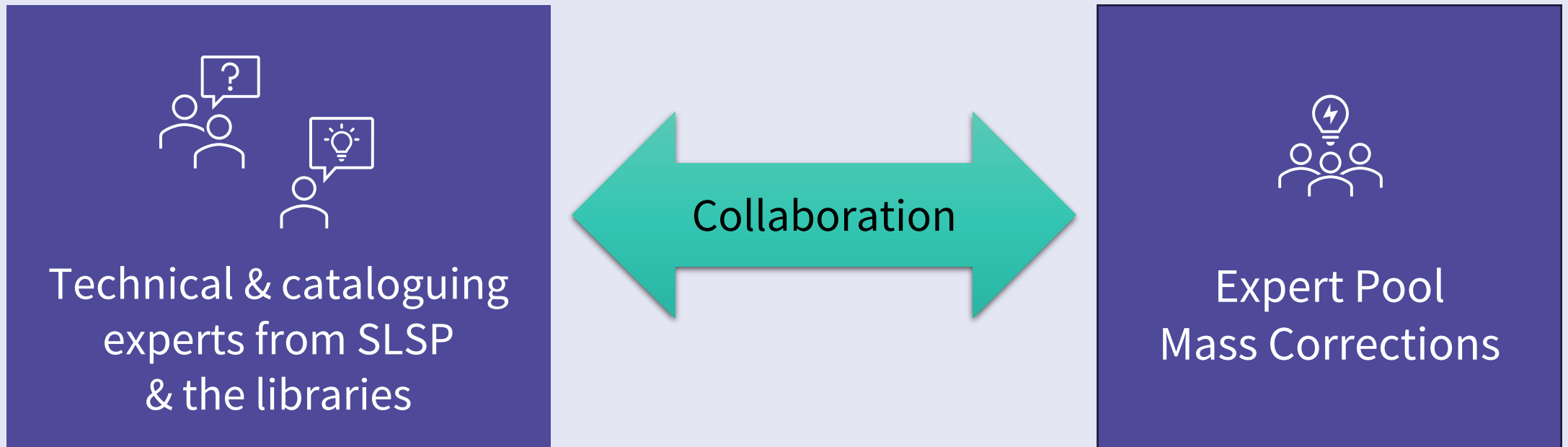


1.b Organizational Context



1.b Organizational Context

How to collaborate the best way?



1.b Organizational Context



Lead

SLSP



Members

8 mass correction experts of 7 libraries

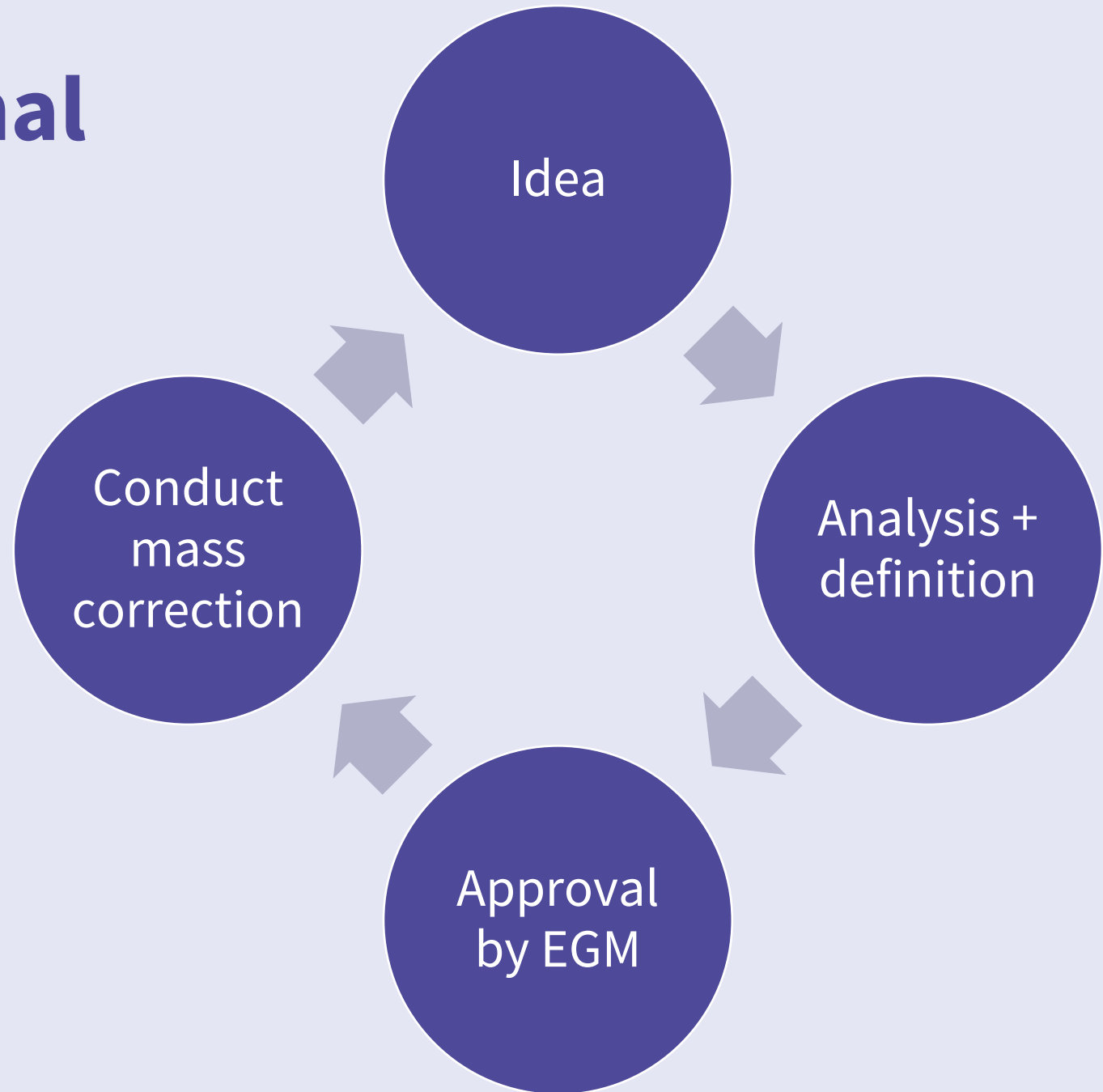


Opportunity

Several members have cataloguing and technical knowledge

1.b Organizational Context

- Iterative workflow
- Meetings: Twice a year
- Up to three corrections at a time



1.b Organizational Context

Ideas for corrections:

- Transparent to all
- Currently 55 in total, always 3 in progress
- New ideas can be added at any time
- Priority determined by voting

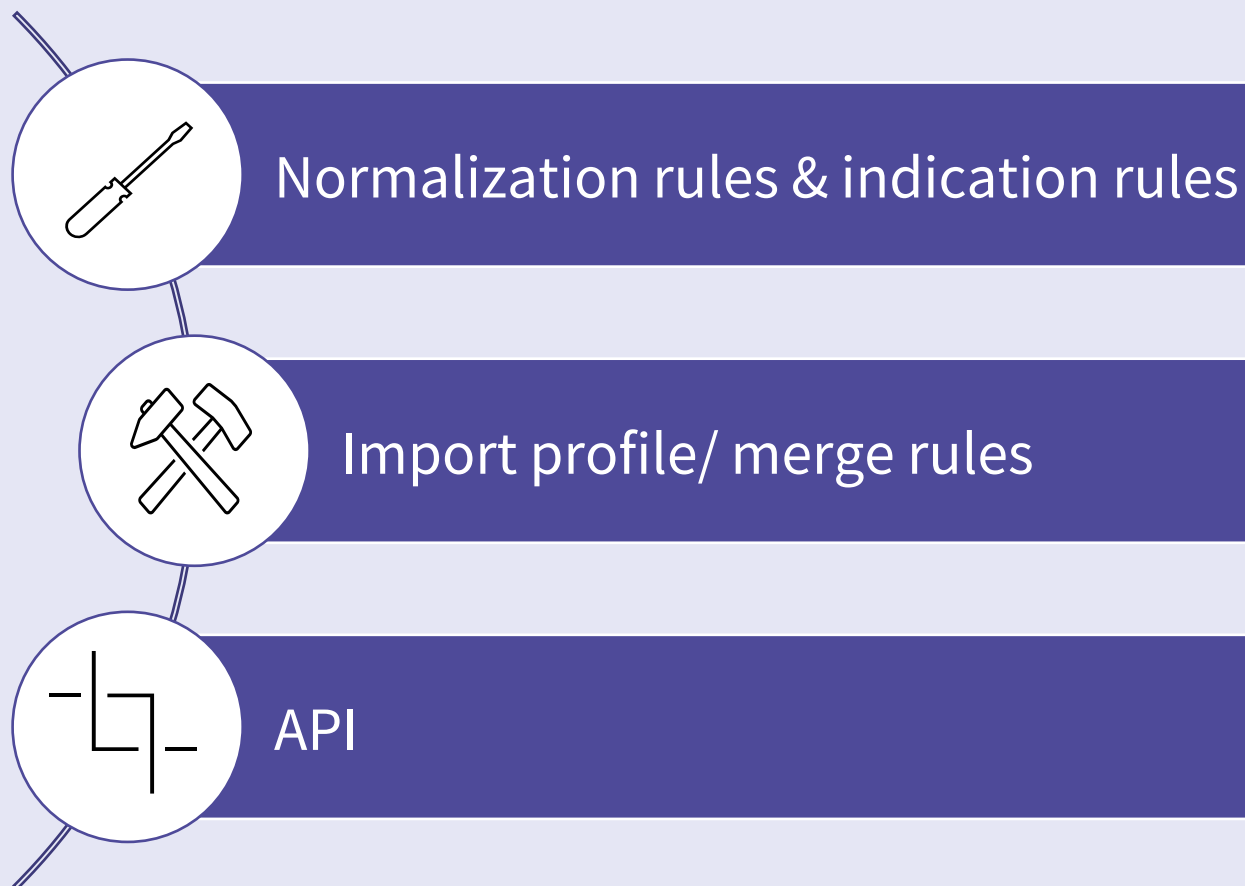
55 topics found

Sticky	Topic Name
★	Wrong IDs in \$w of series or linking entries
★	Anchoring records without inventory in the French spe...
★	Replace \$w identifiers with MMS
★	Monographs ("nam-Records") with 022 ISSN
★	Records with nas in LDR: no ISBNs or DOIs allowed
★	Field 655: delete field "655_7 Sa Bilderbuch \$2 idsmusi"
★	GND ID with lower case x
★	E-book recordings encoded in print
★	Date only in 264, missing in 008
★	Delete fields 883 and corresponding/orphaned \$8

2. Tools

2.a Alma integrated tools

What is the best way to modify large volumes of data in complex use cases with clean and reliable logging?

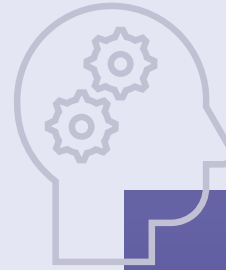


Normalization rules (and indication rules)



Chances

- Useful for simple, rule-based changes
- System functionality / native Alma
- Easy to apply on sets
- Very quick



Limitations

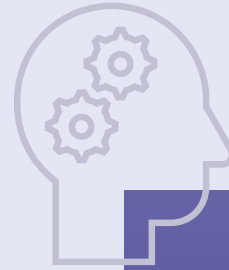
- Limited amount of commands/replacements
- No easy mapping with normalization rules
- Sometimes unexpected behaviour
- Limited logging possibilities

Changes with Import Profile / merge rules



Chances

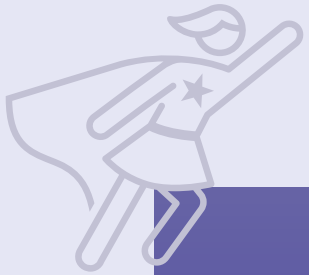
- Ideal for straightforward additions, e.g. inserting IDs in field 035 or applying local extensions



Limitations

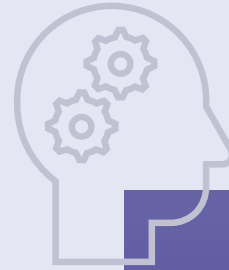
- Creation of XML file is necessary
- Testing is required
- Limited file size, larger amount of bib records must be done in batches

Changes via API



Chances

- Ideal for applying record-specific updates through a Python script
- accurate
- Custom and robust logging
- For complex use cases



Limitations

- Working with large amounts of data takes considerable time
- Code or scripting is required

2.b External Database

Content:

- Current and older versions NZ records
- No IZ records, no authorities, no inventory

System:  MongoDB®

Purpose:

- better analysis possibilities
- Data backup
- Deduplication

Access (SLSP):

Compass (UI) or Python

2.b External Database

Documents 18.6M Aggregations Schema Indexes

⌚ ▼ {"marc.830.sub.w": "(IDSBB)000590005DSV01"}

+ ADD DATA ▼ EXPORT DATA ▼ UPDATE DELETE

```
_id: ObjectId('6685a16d71fa47eede4cee76')
mms_id: "991059787829705501"
marc: Object
p_date: 2024-10-25T05:16:06.000+00:00
sup: false
c_date: 2020-11-09T06:26:44.000+00:00
u_date: 2024-10-24T14:27:44.000+00:00
format: "Book"
access: "p"
```

```
_id: ObjectId('6685a2f171fa47eede544edd')
mms_id: "991044927589705501"
marc: Object
p_date: 2025-04-04T04:53:50.000+00:00
sup: false
c_date: 2020-11-09T10:36:59.000+00:00
u_date: 2025-03-29T05:27:23.000+00:00
format: "Book"
access: "p"
```

```
_id: ObjectId('6685a00d71fa47eede45c8a1')
mms_id: "991171018185705501"
marc: Object
  245: Array (1)
    0: Object
      ind1: "0"
      ind2: "0"
      sub: Array (3)
        0: Object
          a: "<<The>> anthropology of power, agency, and morality"
        1: Object
          b: "the enduring legacy of F.G. Bailey"
        2: Object
          c: "edited by Victor C. de Munck and Elisa J. Sobo"
  264: Array (1)
    0: Object
      ind1: " "
      ind2: "1"
      sub: Array (3)
        0: Object
          a: "Manchester"
        1: Object
          b: "Manchester University Press"
        2: Object
          c: "2022"
```

2.c Alma API Wrapper



Wide Alma API coverage



Request builder



API keys management



Errors & logs handling



Open source



Actively maintained

 **Almapi Wrapper**

Available on Read the Docs

<https://almapi-wrapper.readthedocs.io/en/latest>

2.c Alma API Wrapper

```
# Import libraries
from almapiwrapper.users import User, NewUser, fetch_users, fetch_user_in_all_iz, Fee, Loan
from almapiwrapper.inventory import IzBib, NzBib, Holding, Item, Collection
from almapiwrapper.config import RecSet, ItemizedSet, LogicalSet, NewLogicalSet, NewItemized
from almapiwrapper.config import Reminder, fetch_reminders, Library, fetch_libraries, Locat
from almapiwrapper.record import JsonData, XmlData
from almapiwrapper.analytics import AnalyticsReport
from almapiwrapper.acquisitions import POLine, Vendor, Invoice, fetch_invoices
from almapiwrapper.configlog import config_log
from almapiwrapper import ApiKeys

# Config logs
config_log()

# Get an item from barcode
item = Item(barcode='03124510', zone='HPH', env='S')

# Create a backup of the record
item.save()

# Update the barcode using the property barcode (library and location also can be changed t
item.barcode = '03124510_NEW'

# Update the internal note using the data property
# We use lxml.etree.ElementTree to find the field and change its value
item.data.find('item_data/internal_note_1').text = 'Note for testing'

# Make the update in Alma
item.update()
```

<https://almapi-wrapper.readthedocs.io/en/latest/>

3. Conclusion

Questions?

Thank you for your attention!

nikol.stepan@slsp.ch ;
raphael.rey@slsp.ch