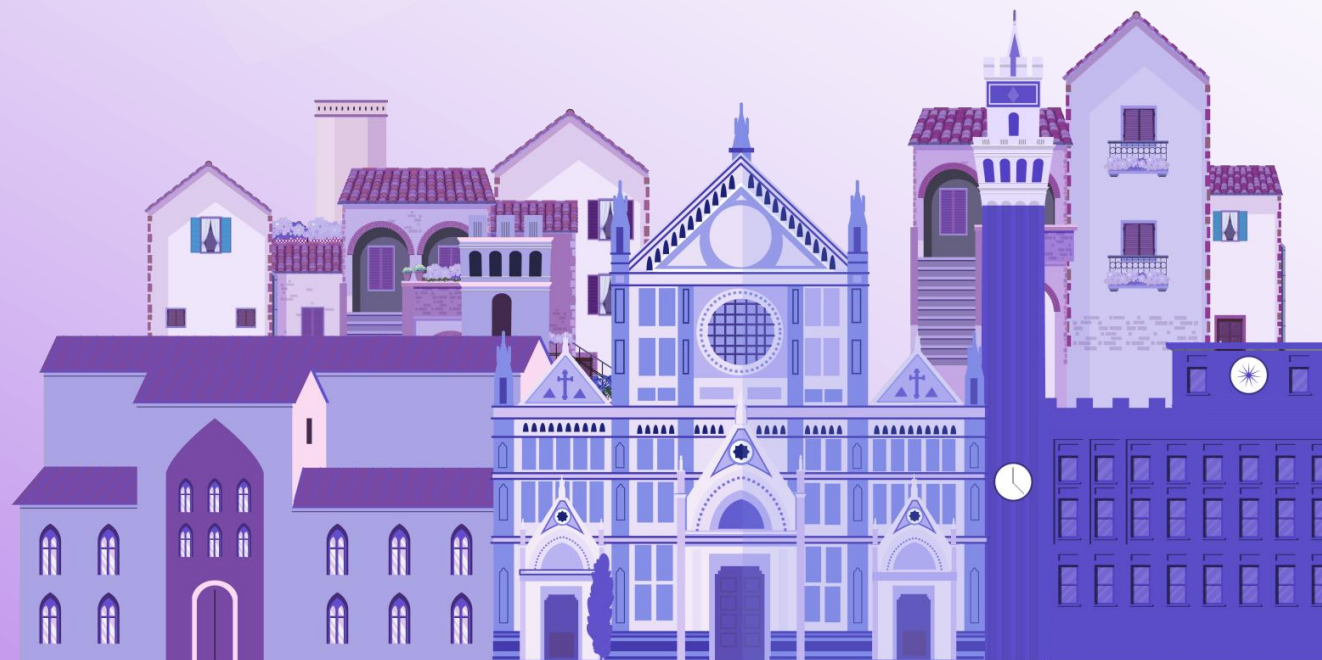


Maximizing Consortia Potential

Leveraging New Features for
Adaptability, Efficiency, and Advocacy



Agenda



How does our platform support and empower consortia today?

A look at our current approach to consortial collaboration, workflows, and infrastructure



What have we delivered recently to enhance the consortial experience?

Highlights from the past year: New features, improvements, and real-world impact

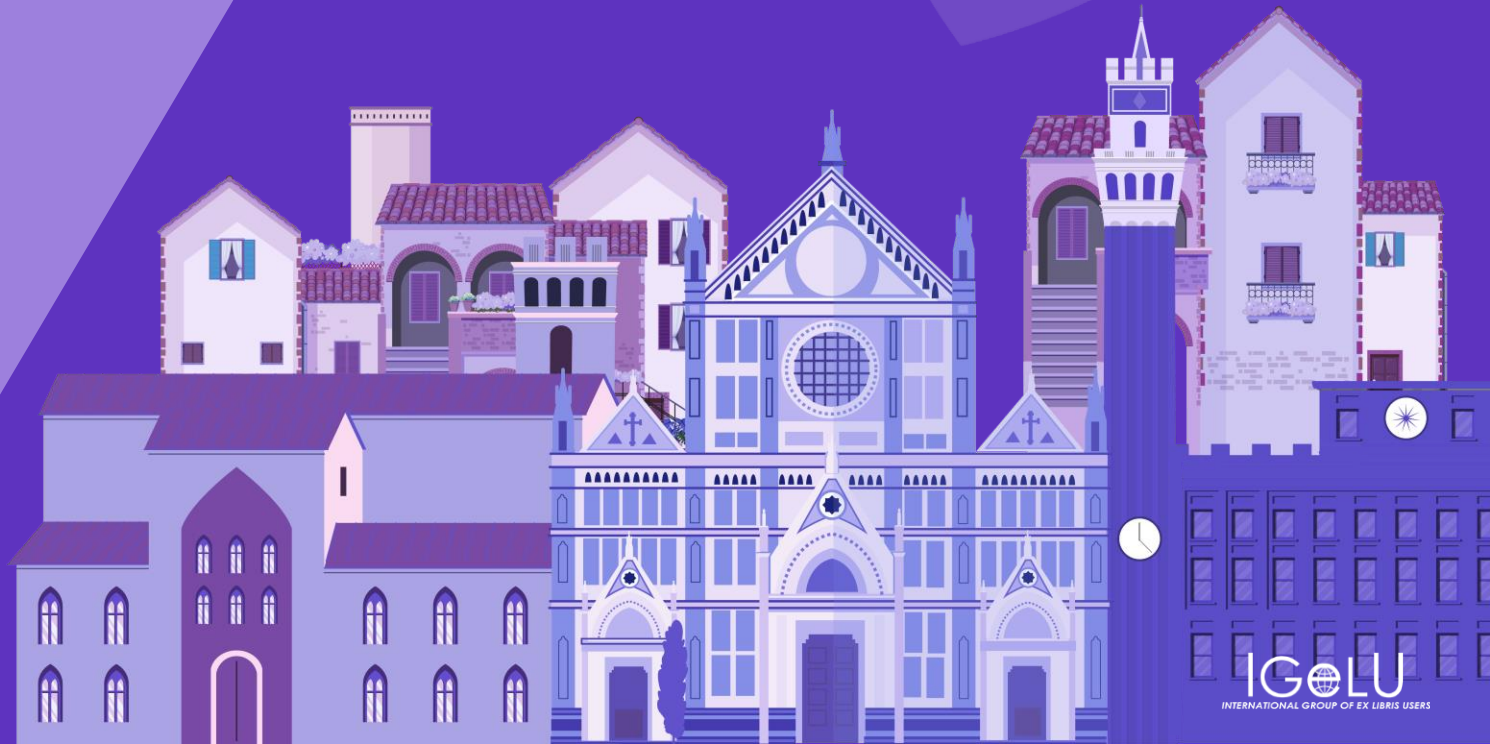


What's on the horizon for consortia in the coming year?

A preview of upcoming developments, strategic goals, and ways we're continuing to evolve for adaptability, efficiency, and advocacy

How does our platform support and empower consortia today?

A look at our current approach to consortial collaboration, workflows, and infrastructure



How does our platform support and empower consortia today?

Types of Collaborative Networks



Collaboration for Patron Services

- Shared Discovery
- Resource Sharing
- Fulfillment

24 Discovery Networks



Collaboration for Technical Services

- Shared Catalog
- Joint Acquisitions
- Analytics
- Administration

50 Consortia with NZ

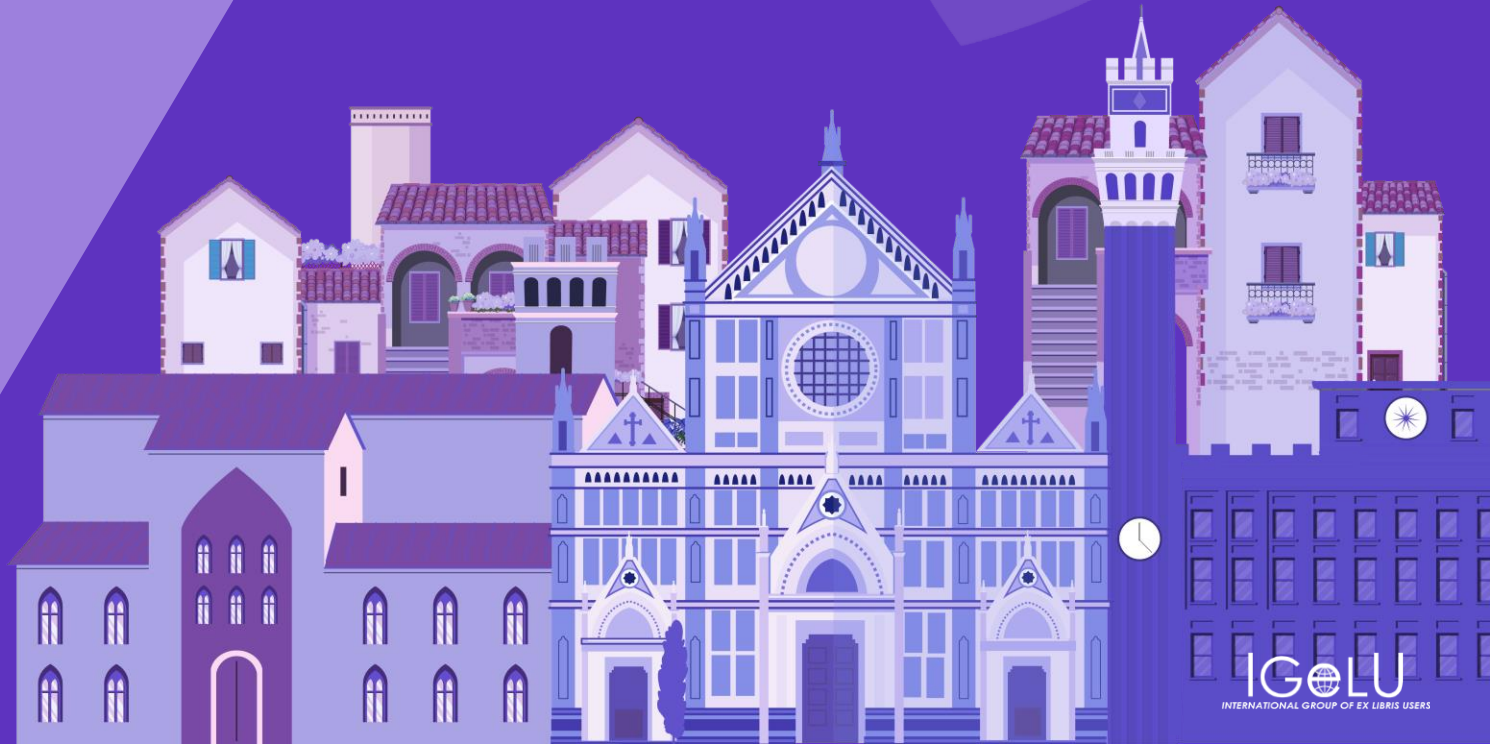


Benefits:

- Efficiencies in operations
- Less duplication of effort/data
- Increased consistency
- Unified user experience

What have we delivered recently to enhance the consortial experience?

Highlights from the past year: New features, improvements, and real-world impact



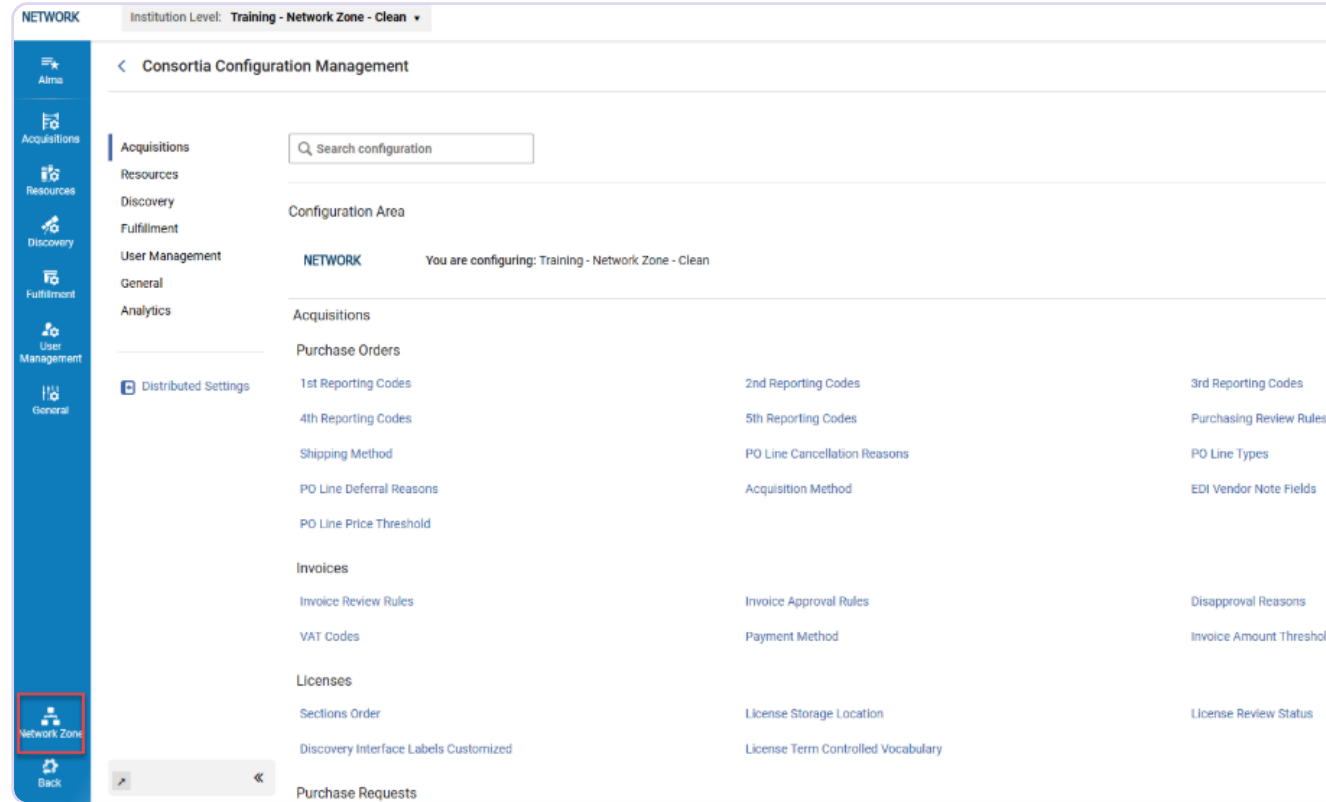
Central Configuration Dashboard (Release in August 2024)

Code Tables, Mapping Tables and Rules

Easy access to
all members
configurations

Selective
distribution

Distribution
mode



Real time
distribution

Row-level vs.
Table-level
inheritance

Management of
configurations
on 3 levels

Benefits for both Central Office and Members

Efficient and Centralized management of configurations across consortia members

Central Configuration Dashboard – In 2025



Opening Hours

Management of opening hours at the institution level and/or Library level (when appropriate)
Distribution of Calendar information



General Electronic Services

Management of General Electronic Services configurations for better cooperation




Share Online Service Order

Management of Online Services Order configuration for better cooperation



Hide and Redirect

All Code and Mapping table configurations and rules configurations existing in the Dashboard are removed from the 'old' Alma and Primo VE configuration menus of the Network Zone
A redirection to the Central Configuration Dashboard is offered in the Alma Menu Search box

 Please note that most configurations have been moved to the new dashboard. Click the link below to access it.

Benefits for both Central Office and Members

Efficient and Centralized management of configurations across consortia members by using the Central configuration Dashboard

Central Configuration Dashboard – In 2025



NZ Distribution notification to IZ administrator

Any update on a Configuration distributed from the Dashboard at the Network level will trigger an email to the relevant administrator at the Member level

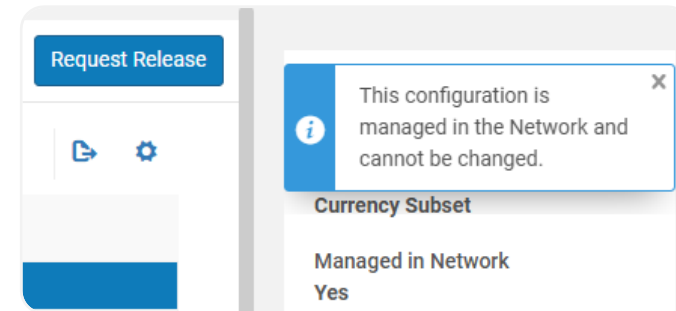
Benefits for Members

Local Administrator will know when and where the Central Office distributes configurations to their local Institution Zone



Option for Members to request release of Imposed Mode

Local administrator can request the release of a configuration managed by the Central Office at Member level



Benefits for Members

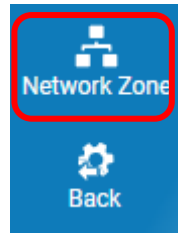
Allows the Institution Zone administrators to get back control on customization of configurations initially managed by the Central Office

Central Configuration Dashboard – In 2025



View in the Network

Option for the Member Administrator to view the network configuration from its member institution.



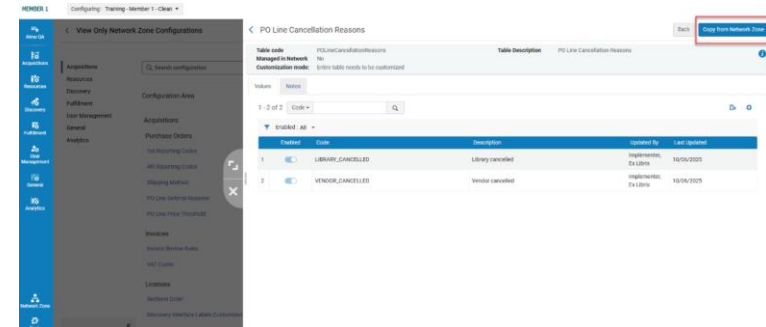
Benefits for Members

Local Administrator will be able to see the Network Zone configurations from their Institution Zone



Get Value from Network

Option for the Member Administrator to get the network configuration from its member institution.




Benefits for Members

Allows the Institution Zone administrators to get from the Network Zone in case the Central Office made a customization they did not receive

Consortia Dashboard Labels – Row Level Distribution

Management and Row level Distribution of Labels code tables from the Consortia Central Configuration Dashboard



Network Zone

ImportCustomize AllRestore AllDistribute SelectedDistribute AllStop selected network management

Filter : EnglishEnabled : All

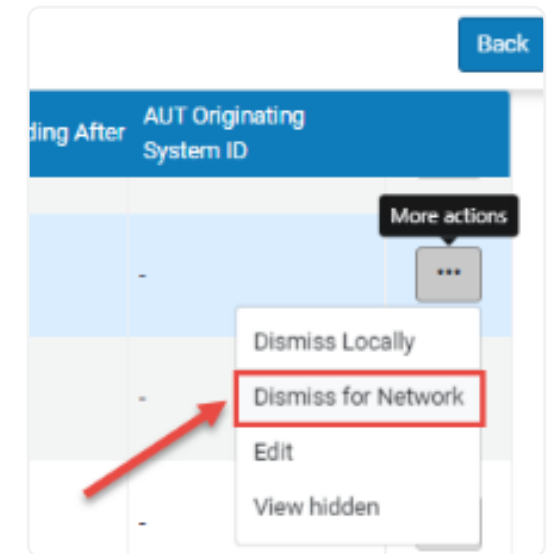
	Enabled	Code	Description	Translation	
1	<input checked="" type="checkbox"/>	<input type="checkbox"/>	nui.message.dismiss	dismiss	dismiss
2	<input checked="" type="checkbox"/>	<input type="checkbox"/>	nui.search.error.dateInvalidCh	Invalid Characters in Date Text	Invalid Characters in Date Text Box

Benefits for both Central Office and Members

Efficient and Centralized management of configurations across consortia members

Enhanced Authority Control Task List (ACTL) for Consortia

- Reporting of record changes processed in the Network Zone at the Institution Zone level
- Enabling corrections or modifications of such records and pushing them to the entire Consortia members' Authority Control Task List
- Allows members to work together as a group
- NZ-level reporting now reflected on IZ-level ACTL
 - New filter to group by NZ-linked records
 - New indication of each reporting line origin
- Dismissal of NZ-linked records from IZ-level ACTL
 - Dismiss Locally
 - Dismiss for Network



Benefits for both Central Office and Members catalogers

It improves the experience for Consortia member catalogers working with authorities by reflecting Network Zone linked records reporting in each Institution Zone Authority Control Task List.

Network Zone Managed Electronic Resources – Library/Campus Level



Idea Exchange

Central office operators can now allocate electronic resources to specific libraries or campuses within a member Institution Zone.

Inventory Management Group Details

Name Music library from Alma university

Group Description Music library from Alma university

Member Code	Member Name	Type
1 EXLDEV1_INST : UMUSI	Music Library (Alma University)	LIBRARY

Add another member

Benefits for both Central Office and Members

It improves efficiency by enabling centralized management of electronic resources for individual libraries or campuses within the member Institution Zone, benefiting institutions that require separate management for their libraries or campuses.

Option to Share Operator Name Across the Fulfillment Network

Institutions in a Fulfillment Network can now opt-in to share the name of their operators who have put items of another institution in transit.

This option is turned off by default.

The operator's name displays in the following locations:



Resource Request
Monitoring



General tab of the
Physical Item Editor (right
hand information pane)



History tab of the
Physical Item Editor
(for Item changes and
Fulfillment activities)



Loan history
(Loan Audit Trail)

Benefits for both Central Office and Members

This improves transparency and enables owning institutions more clarity on who at their partner institution is the last person to have handled items they own.

Add Network Zone Titles to Alma Collections

You can now add titles from the Network Zone to Collections in your Institution Zone.

There are two ways that you can do this:



When adding a title from the Network Zone from the Collection Resource Editor



From the search results list when searching for titles in the Network Zone

Benefits for Members

Local collection will now include Network Zone titles.

The screenshot displays the Alma interface for searching titles in the Network Zone. The search results list shows two titles:

- 1** ☐ **A Cultural History of Race in Antiquity**
Book (Book - Electronic) text; computer; online resource
By Denise McCoskey (London: Bloomsbury Publishing. 2021)
Subject History--Ancient ; Race ; Social & cultural history
Series The Cultural Histories Series
Modification Date 10/02/2025 02:01:37 CET
Language Undetermined
Creation Date 21/06/2023 17:23:42 CEST
ISBN 9781350299986 and others
Record Number (CKB)545000000683139 and others
MMS ID 999922197556102201
Bibliographic Rank 100
- 2** ☒ **Soldaterne Gynther Hansen**
Book (Book - Physical)
By Hansen, Gynther ([København] Gyldendal 1989)
Modification Date 23/04/2024 06:42:20 CEST
Language Danish
Creation Date 02/11/2015 17:23:08 CET
ISBN 8700777846
Record Number 900877502-47bibsys_network and others
MMS ID 999008775024702201
Bibliographic Rank 56

A context menu is open over the second title, showing options:

- Edit Record
- View Record
- ...
- Order
- Resource Sharing Request
- Push to MDE
- Link
- Add To Collection** (highlighted with a red box)
- Add Reminder
- Add Local Portfolio
- Linked Data

Collection Development – Physical Books Unique Titles Network View



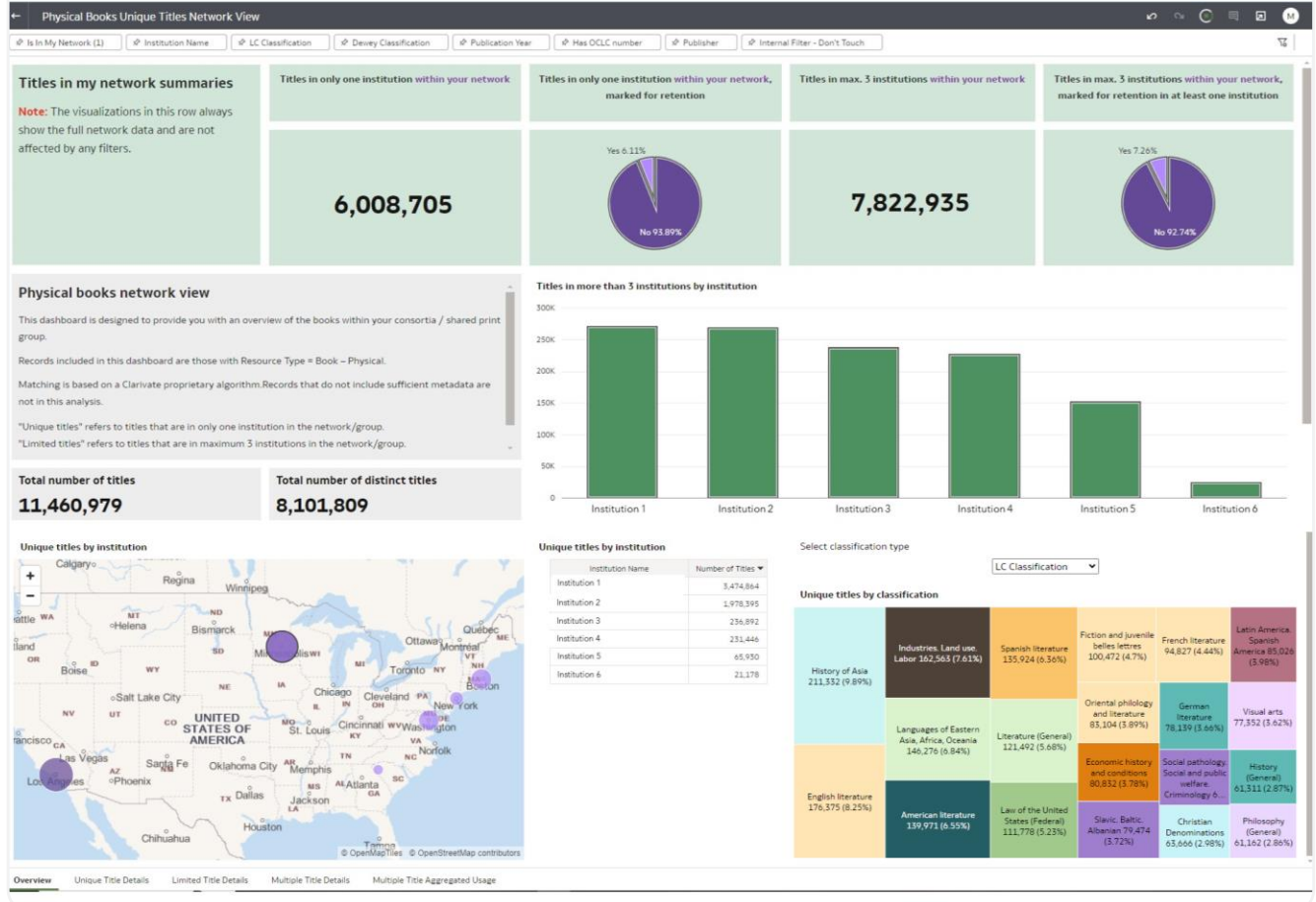
High Level Consortia View

Typical questions:

- Which institutions hold the highest number of multiple titles?
- How are certain classifications dispersed across a geographic region?
- Which institution has the largest collection of unique titles per classification?

Benefits for Central Office
Collection development at a
glance at NZ level

Cross Institution Analytics: Physical Books Unique Title Network View



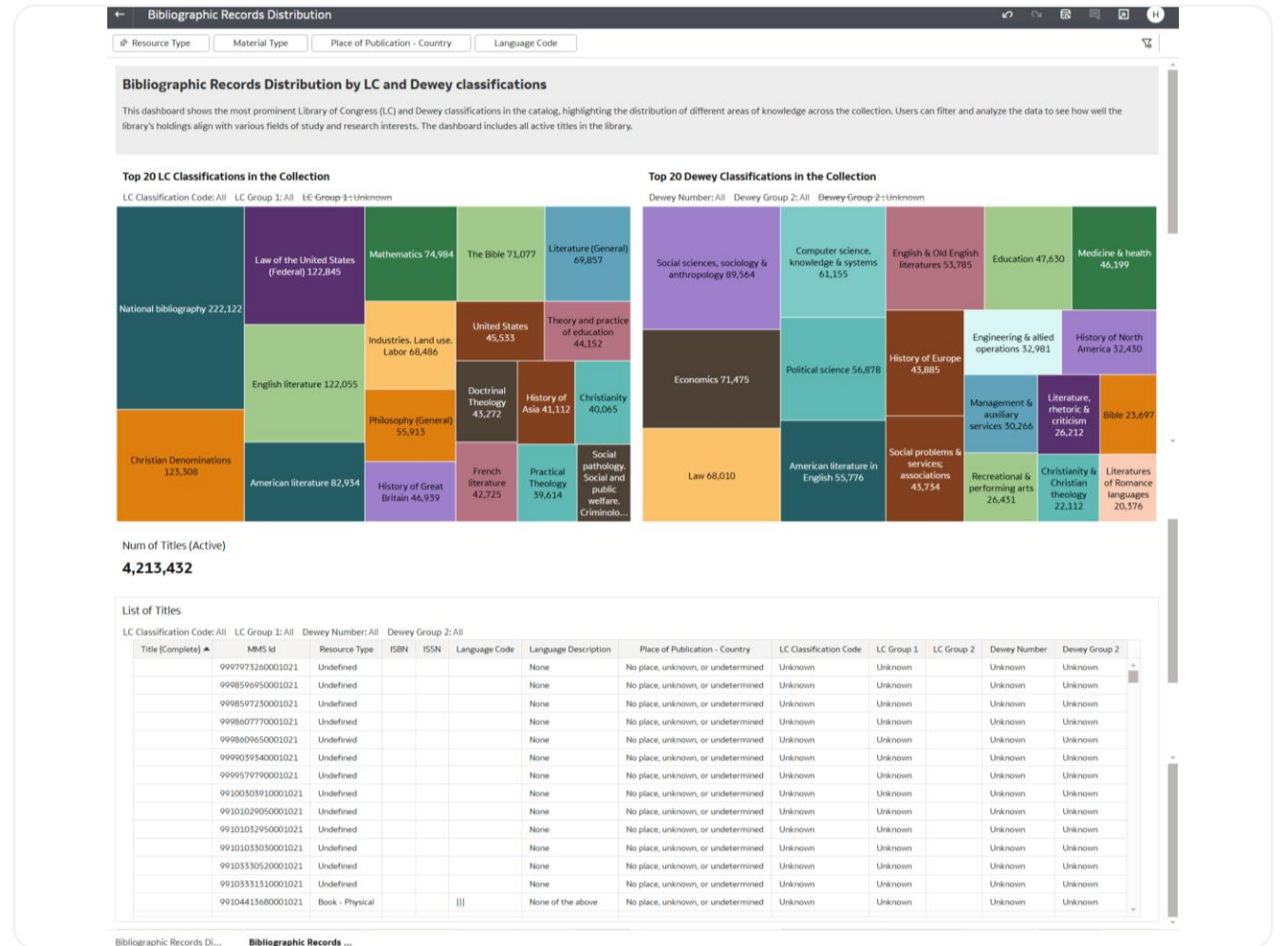
New LC Subjects Distribution workbook

New Collection Classification Data Visualization dashboard showing the most prominent LC and Dewey classifications in the catalog

Libraries can filter and analyze the data to evaluate how well their holdings support various fields of study

Benefits for Members

This feature will help institutions better understand their collections, enabling smarter, data-driven decisions.



Combination of e-Resources Activated at Network Zone and Institution Zone for Display Logic Rules

Using the "Display Logic Rules", Network members will be able to create rules for the Link Resolver electronic services for electronic collections managed in the Network Zone or the institution.



Network Zone operator will be able to manage a member Display Logic Rules configuration and combine e-resources coming from both Network and Institution zones from the Central Configuration Dashboard.



Member administrator will be able to manage Display Logic Rules configuration by combining e-resources coming from both Network and Institution zones.

Add Rule

For user from groups

hide service *

with

with value *

if service exists

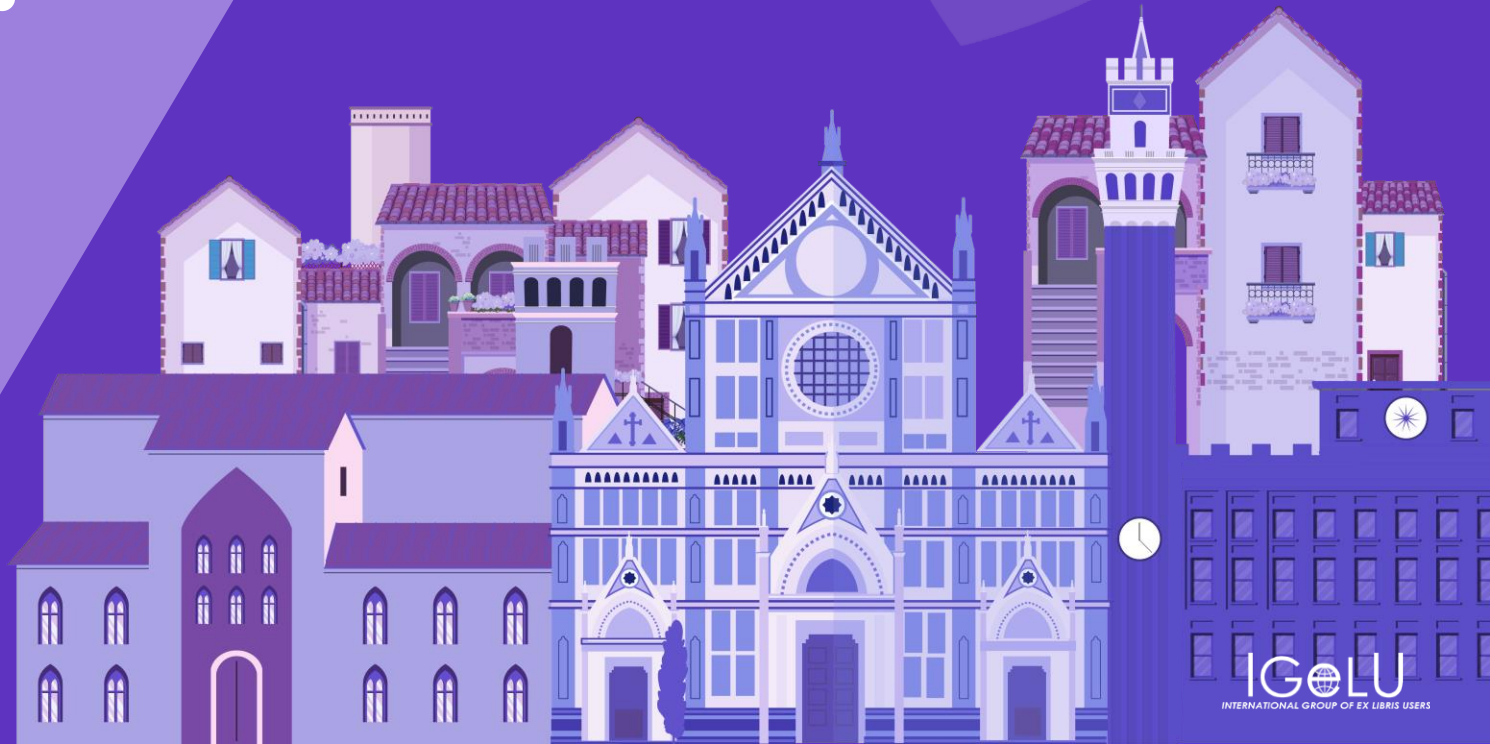
Please Note, The Electronic Collection Pick Up uses a combined search across NZ and IZ records, where applicable.

Benefits for Members and Central Office

Display Logic Rules Configuration will now offer a combination of e-resources activated at the Network Zone and Institution Zone.

What's on the horizon for consortia in the coming year?

A preview of upcoming developments, strategic goals, and ways we're continuing to evolve for adaptability, efficiency, and advocacy



Working Together



Established consortia
focus groups



Focus groups provided
requirement consolidated
document



Prioritization through
voting process



Thorough analysis
conducted by Ex Libris

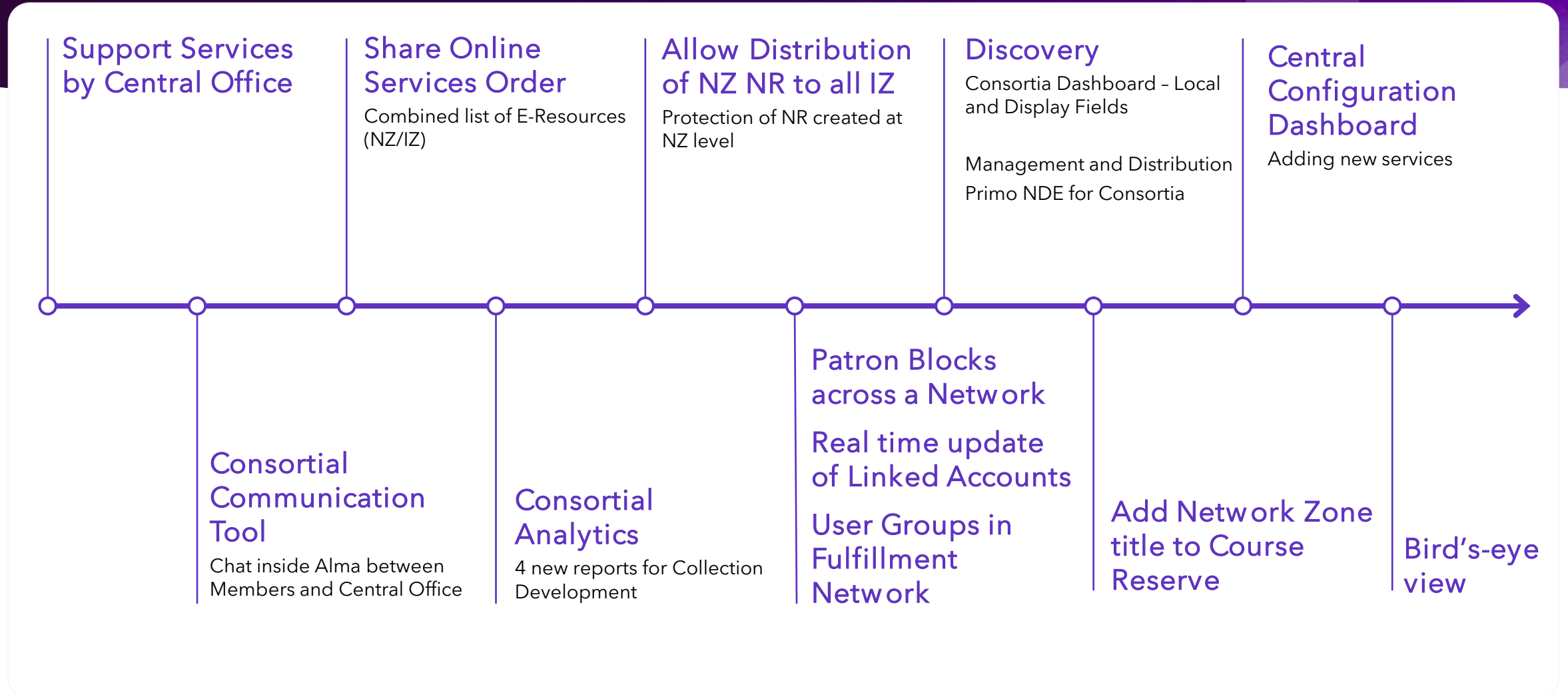


Focus areas were
identified

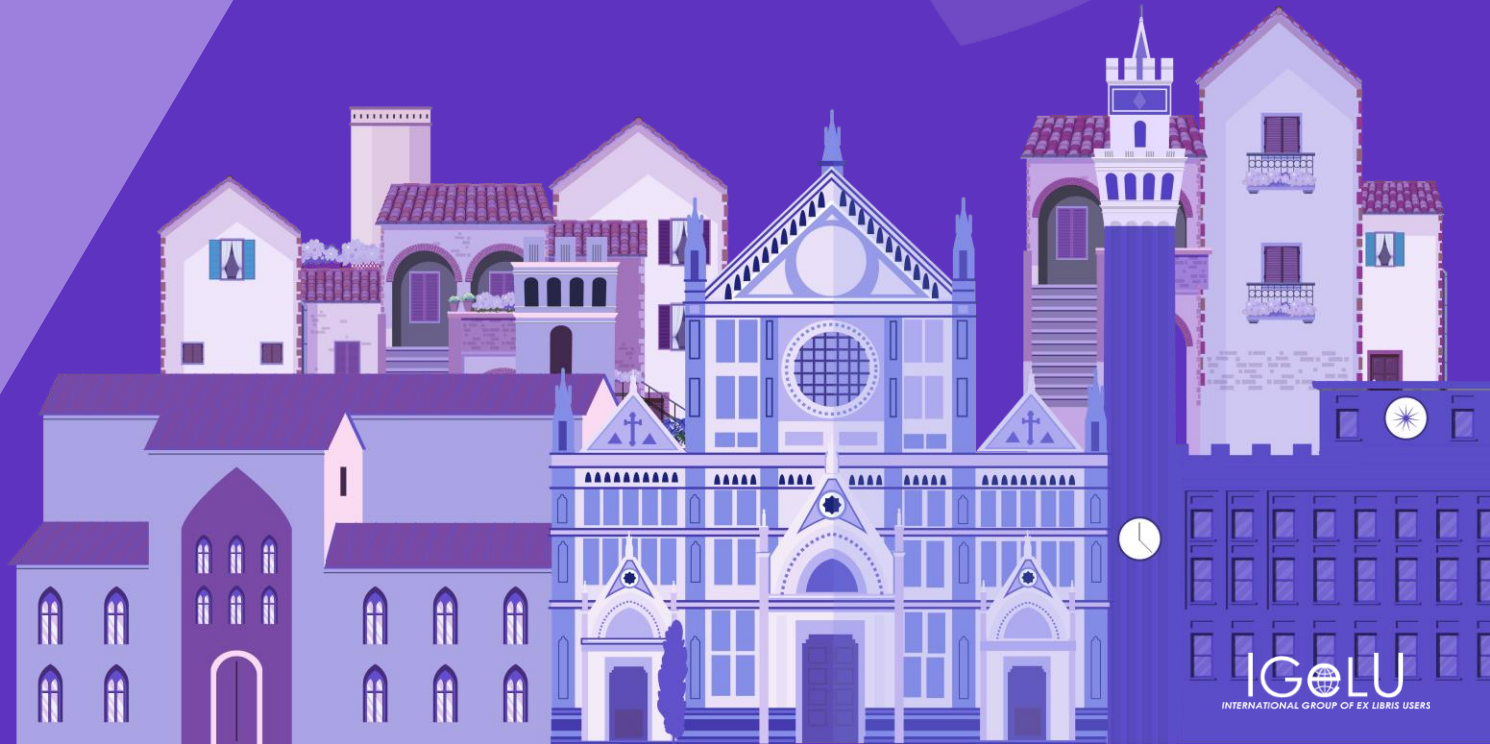


Built consortia roadmap
for 2025/2026

Collaborative Networks 2025-2026



What should you take away?



Key takeaways



There are 2 types of collaborative networks:

- For Patron services
- For Technical services



Collaborative network for technical services requires:

- Shared catalog
- Central Office

Call to Actions



Participation

Voice your needs in the Community of Practices working group



Knowledgeable

Stay tuned for new feature announcements in our sneak previews and/or release notes



Roadmap

Create ideas and vote on existing ideas on the Idea Exchange



Communication

Always give us feedback

Thank You

Your voice matters!

Take our 2-min
survey now



Help us innovate

Your feedback drives the next generation of valuable solutions



See real impact

The improvements you experience today are direct results of feedback from customers like you



Shape the future

Help us prioritize improvements that will continue to add value to your work